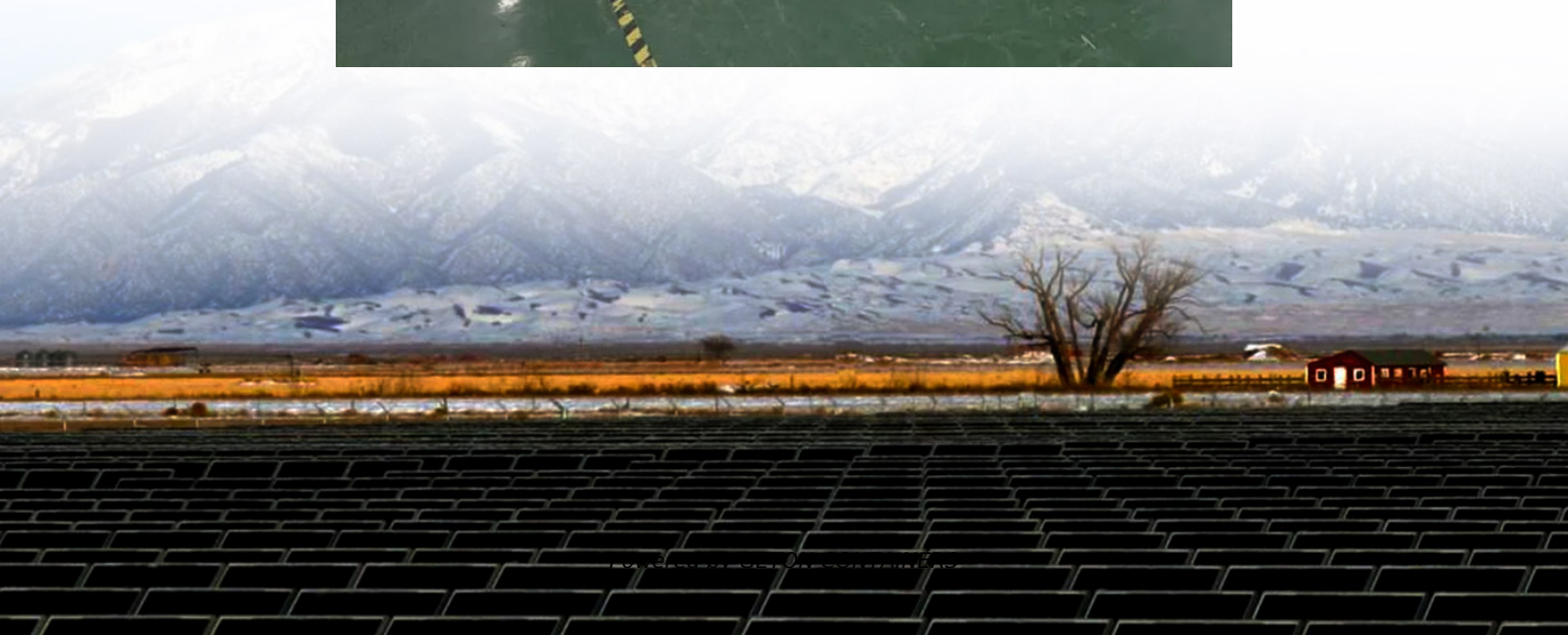


100 series BMS battery management system





Overview

What is a bms-100 battery management system?

Electrical systems are complex and critical to heavy-duty vehicle performance. The BMS-100 Battery Management System enables continuous electrical system monitoring of a heavy-duty vehicle's entire battery and electrical system while in operation. Ideal for managing no-idle loads, the BMS-100 system offers:.

What is battery management system (BMS)?

Battery Management System (BMS) is the “intelligent manager” of modern battery packs, widely used in fields such as electric vehicles, energy storage stations, and consumer electronics.

What is a BMS used for?

A Battery Management System (BMS) is widely used in various applications such as electric vehicles (EVs), energy storage systems (ESS), uninterruptible power supplies (UPS), and industrial battery applications.

How many batteries can be connected to a BMS?

The maximum number of batteries that can be connected to the BMS is 20. The SmallBMS, VE.Bus BMS V2 and the Lynx Smart BMS can connect to a 12, 24 or 48 V system. The other BMS models can only connect to a 12 V system. The SmallBMS and VE.Bus BMS V2 require that all loads and charge sources are directly connected to the battery.



100 series BMS battery management system



[Battery Management System Guide: ...](#)

Comprehensive guide to Battery Management Systems (BMS), covering functions, circuits, components, and selection tips for safer, more reliable lithium-ion battery packs.

[Free Quote](#)

[75S 100A Unique design BMS lithium battery ...](#)

The high-performance intelligent lithium battery management system produced by our company adopts the international leading technology, which greatly improves the battery management efficiency ...

[Free Quote](#)



[Battery Management Systems \(BMS\): A Complete Guide](#)

A BMS plays a crucial role in ensuring the optimal performance, safety, and longevity of battery packs. This comprehensive guide will cover the fundamentals of BMS, its ...

[Free Quote](#)



[48V 100A BMS: Advanced Battery Management System for ...](#)

The 48V 100A BMS (Battery Management System) is a sophisticated electronic control unit designed specifically for lithium battery protection and management. This advanced system ...



[Free Quote](#)



[Midtronics BMS-100 Heavy Duty Battery Management System](#)

The BMS-100 Battery Management System enables continuous electrical system monitoring of a heavy-duty vehicle's entire battery and electrical system while in operation.

[Free Quote](#)



[75S 100A Unique design BMS lithium battery management system](#)

The high-performance intelligent lithium battery management system produced by our company adopts the international leading technology, which greatly improves the battery ...

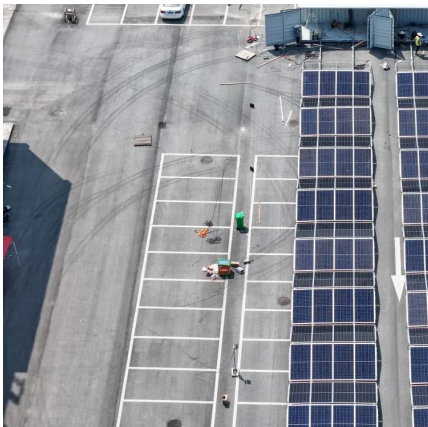
[Free Quote](#)



[Battery Management System \(BMS\) Overview](#)

The Smart BMS CL 12/100 and Smart BMS 12/200 have a dedicated alternator input. This input will activate when the alternator is running, and the starter battery has ...

[Free Quote](#)





[Battery Management System Guide: Functions, Circuits](#)

Comprehensive guide to Battery Management Systems (BMS), covering functions, circuits, components, and selection tips for safer, more reliable lithium-ion battery packs.

[Free Quote](#)



[Battery Management Systems \(BMS\): A ...](#)

A BMS plays a crucial role in ensuring the optimal performance, safety, and longevity of battery packs. This comprehensive guide will cover the fundamentals of BMS, its key functions, architecture, ...

[Free Quote](#)



[Battery Management System \(BMS\) Detailed ...](#)

Battery Management System (BMS) is the "intelligent manager" of modern battery packs, widely used in fields such as electric vehicles, energy storage stations, and consumer electronics. Its core task ...

[Free Quote](#)



[Battery Management System \(BMS\) Detailed Explanation: ...](#)

Battery Management System (BMS) is the "intelligent manager" of modern battery packs, widely used in fields such as electric vehicles, energy storage stations, and consumer ...

[Free Quote](#)





[100A 48V BMS Explained:Why BMS Is Critical for ...](#)

They provide assurance, control, and long-term value, making them the foundation of contemporary energy systems. FAQ Q1:What does 100a BMS mean? A1:"100A BMS" refers to ...

[Free Quote](#)



[Midtronics BMS-100 Heavy Duty Battery ...](#)

The BMS-100 Battery Management System enables continuous electrical system monitoring of a heavy-duty vehicle's entire battery and electrical system while in operation.

[Free Quote](#)

Contact Us

For catalog requests, pricing, or partnerships, please visit:
<https://www.getonco.co.za>

Scan QR Code for More Information



<https://www.getonco.co.za>