

200w solar inverter





Overview

What size inverter for 200 watt solar panel?

For a 200W solar panel system, you need anywhere between 300-1000 watt inverter to run AC appliances. However, the exact size of the inverter you need depends on the specific appliances you plan to use.

What is a 200W Solar System?

The 200W solar system is a complete Luminous solar off-grid combo with a 200 watt solar panel (2 x 100 watt), 500VA solar inverter, 100Ah solar battery, mounting structure, wires, nut-bolts and other accessories. It is a small solar system to run the basic load of your home, business, school, etc.

What size solar inverter do I Need?

So for an inverter that is grid-tie, you should ensure that it is 200W. On the other hand, if the inverter is going to be off-grid to store energy, you must use one that is smaller than or between 500W and 600W. How To Calculate The Size Of Inverter For Your Solar Panel?

Choosing the right sized inverter is essential.

How many watts can a 100kW solar inverter handle?

These inverters can handle a range of power sources from 100,000 watts to 149,999 watts. Compare these 100kW commercial solar inverters from ABB, Fronius, SMA, SolarEdge, SatCon, Solectria, Schneider Electric, PV Powered, Power One, or Advanced Energy. Combine them with solar panels for a complete home system to qualify for tax credit and rebates.



200w solar inverter



[200w Solar Inverter , RAGGIE](#)

With advanced technology and high-quality materials, our solar inverter delivers reliable and consistent power output to meet your energy needs, The 200w Solar Inverter is ...

[Free Quote](#)

[What Size Inverter for 200W Solar Panel? Do ...](#)

What size inverter for 200 watt solar panel? For a 200W solar panel system, you need anywhere between 300-1000 watt inverter to run AC appliances. However, the exact size of the inverter you need depends on ...

[Free Quote](#)



[What Size Inverter For A 200W Solar Panel Calculator](#)

Understanding the precise inverter size you need for a 200W solar panel setup can be a daunting task. What Size Inverter for a 200W Solar Panel Calculator assists you in ...

[Free Quote](#)



[Can a 200W Solar Inverter Power a House?](#)

While a 200W solar inverter may seem like a viable option, it may not be sufficient to power an entire house on its own. According to experts in the field, a 200W solar panel can ...

[Free Quote](#)



[what size inverter for 200 watt solar panel](#)

How do I choose the right size inverter for my 200-watt solar panel system? Choose an inverter with a capacity that matches or slightly exceeds the total wattage of your ...

[Free Quote](#)



[What size inverter for a 200w solar panel?](#)

The size of the inverter you need for a 200-watt solar panel depends on the specific appliances you plan to use. However, a 300-watt inverter would be a good starting point for ...

[Free Quote](#)



[What Size Inverter for 200W Solar Panel? Do you Really ...](#)

What size inverter for 200 watt solar panel? For a 200W solar panel system, you need anywhere between 300-1000 watt inverter to run AC appliances. However, the exact size ...

[Free Quote](#)



[Can a 200W Solar Inverter Power a House?](#)



While a 200W solar inverter may seem like a viable option, it may not be sufficient to power an entire house on its own. According to experts in the field, a 200W solar panel can provide approximately 800 ...

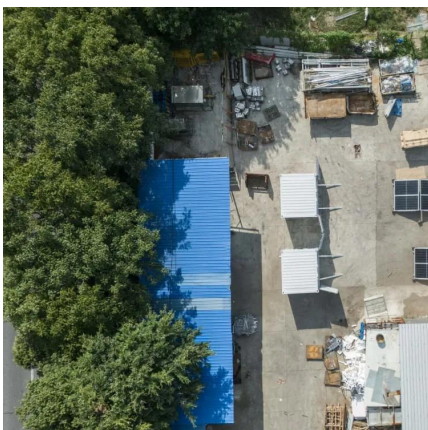
[Free Quote](#)



[Best Inverter For 200 Watt Solar Panel \[Updated: August 2025\]](#)

The landscape for 200-watt solar panels changed dramatically when advanced inverter technology entered the picture. Having tested these setups myself, I can tell you that ...

[Free Quote](#)



[Amazon : Renogy 200 Watt 12 Volt Monocrystalline Solar ...](#)

Amazon : Renogy 200 Watt 12 Volt Monocrystalline Solar Panel Starter Kit & 1000W Pure Sine Wave Inverter 12V DC to 120V AC Converter for Home, RV, Truck, Off-Grid ...

[Free Quote](#)



[What size inverter for a 200w solar panel?](#)

The size of the inverter you need for a 200-watt solar panel depends on the specific appliances you plan to use. However, a 300-watt inverter would be a good starting point for most applications.

[Free Quote](#)



Contact Us

For catalog requests, pricing, or partnerships, please visit:
<https://www.getonco.co.za>

Scan QR Code for More Information



<https://www.getonco.co.za>