

220v voltage mobile power inverter





Overview

What is a 12V inverter?

12V Inverter. A 12V inverter is an electrical device that converts 12 volts of DC power into AC power. The input power typically comes from a 12V battery. Modified sine wave power inverter can provide you 110/120V or 220/230V/240V AC power.

What types of inverters are available?

We offer a variety of specifications and models of inverters to meet your power needs, whether for home, automotive, or travel purposes. The Leaptrend Sirius series 2000W 12V Pure Sine Wave Inverter is perfect for most off-grid systems, whether for a van, RVs, trucks, boats, yachts, coffee van inverter or any remote location needing power.

What is a 24V 600W inverter?

24V 600w inverter with peak power 1200w, which is a modified sine wave, converts your car battery power to AC power 110/120 Volt or 220/230/240 Volt for options, with a safe charging design to give your device multi-protection. The modified sine wave inverter's output current is less than 0.1A and the max efficiency is 90%.

What is a 24V inverter used for?

The primary purpose of a 24V inverter is to provide electrical power for devices that operate on AC power when only a DC power source is available. 24V inverter can be used to run various electrical devices and appliances that require AC power, such as household appliances, electronics, tools, and more. 48V Inverter.



220v voltage mobile power inverter



[Best 24V to 220V Power Inverters for Home, RV, and Solar ...](#)

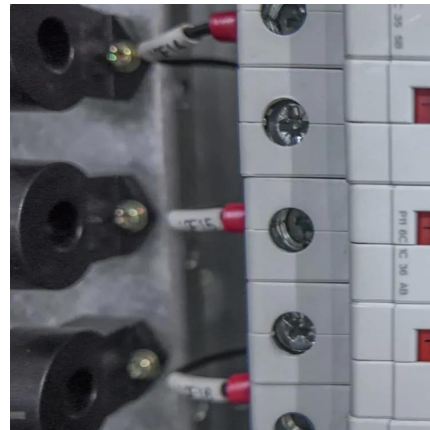
Choosing the right power inverter 24V to 220V is crucial for efficient energy conversion and reliable power supply in various settings such as homes, RVs, trucks, and off ...

[Free Quote](#)

[12V-220V/230V Battery Inverter , 2000 Watt Pure Sine Wave](#)

Shop Leaptrend 12V DC to 220V/230V/240V AC 2000W Pure Sine Wave Battery Inverter designed for RVs, Trucks, Outdoor, Off-Road, Marine, Home Household Electronics including ...

[Free Quote](#)



[Outdoor mobile power 220v manufacturers ...](#)

Outdoor mobile power 220v manufacturers portable energy storage power inverter car battery emergency power supply Model OPS200 Battery type Lithium Battery Battery Level 173Wh/48000mAh AC Output Power 200W ...

[Free Quote](#)

[Congsin 300W Modified Sine Wave Inverter , 12V DC to 220V](#)

...

The Congsin 300W Modified Sine Wave Inverter converts 12V DC to 220V AC with dual USB ports, universal plug, and battery clips, making it ideal for automotive, camping, and ...



[Free Quote](#)



[12V-220V/230V Battery Inverter , 2000 Watt Pure Sine ...](#)

Shop Leaptrend 12V DC to 220V/230V/240V AC 2000W Pure Sine Wave Battery Inverter designed for RVs, Trucks, Outdoor, Off-Road, Marine, Home Household Electronics including ...

[Free Quote](#)



[220 Volt Inverter: The Ultimate Guide to Choosing the Right ...](#)

A 220 volt inverter converts DC power from batteries into 220V AC power, allowing you to run appliances when traditional power sources are unavailable. How do I ...

[Free Quote](#)



Outdoor mobile power 220v manufacturers portable energy storage power

Outdoor mobile power 220v manufacturers portable energy storage power inverter car battery emergency power supply Model OPS200 Battery type Lithium Battery Battery Level ...

[Free Quote](#)



[Best Power Inverters 24V to 220V for Reliable AC Conversion](#)



Choosing the best power inverter 24V to 220V is essential for efficiently converting DC power from batteries or solar systems into usable AC power for your devices. Whether you ...

[Free Quote](#)



Battery Power Inverter - Portable Dc Inverter, 21v to 220v Ac ...

Battery Power Inverter - Portable Dc Inverter, 21v to 220v Ac Converter , Mobile Charger, Travel Voltage Adapter, Charging Station for Phones, Tools, Home, Campsite, ...

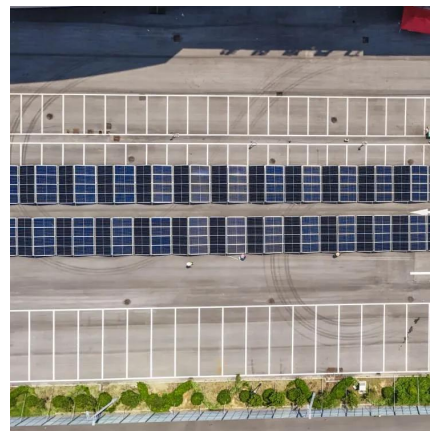
[Free Quote](#)



[Power Inverter, DC to AC Inverter , inverter.](#)

80w car power inverter, modified sine wave, DC 12v input to 220V AC output, advanced circuit design, high conversion efficiency up to 90%. Rated power 80w, peak power 160w. Adopting ...

[Free Quote](#)



[Best 220 Volt Power Inverter for Off-Grid and on-the-Go Power](#)

This 4000W peak inverter converts 12V DC into 110V/220V AC, making it suitable for powering appliances, tools, and electronics in cars, RVs, trucks, boats, and home backup ...

[Free Quote](#)



[Power Inverter, DC to AC Inverter , inverter.](#)



80w car power inverter, modified sine wave, DC 12v input to 220V AC output, advanced circuit design, high conversion efficiency up to 90%. Rated power 80w, peak power 160w. Adopting an aluminum alloy shell, the car inverter ...

[Free Quote](#)



Contact Us

For catalog requests, pricing, or partnerships, please visit:
<https://www.getonco.co.za>

Scan QR Code for More Information



<https://www.getonco.co.za>