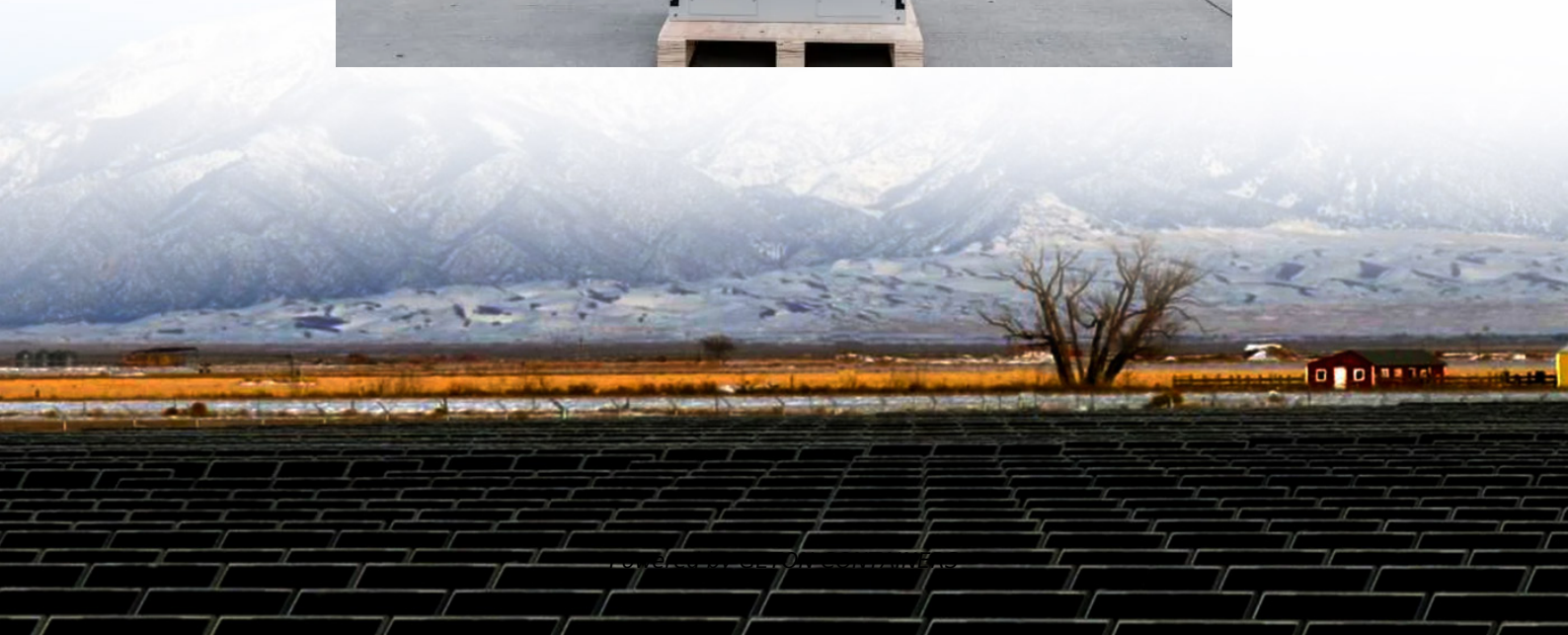


300kw wind power generation system design





Overview

Who makes the Wind Turbine 300 kW?

The wind turbine 300 kW is a production of Windkraft System Zürcher AG, a manufacturer from Switzerland. This manufacturer has been in business since 2017. Specialist for the transport of wind farm components throughout Europe. There are no models to this Windturbine. The rated power of Windkraft Zürcher 300 kW is 300,00 kW.

What is the Windkraft Zürcher 300 kW wind turbine?

The Windkraft Zürcher 300 kW is a 300,00 kW wind turbine produced by Windkraft System Zürcher AG, a Swiss manufacturer established in 2017. It starts generating power at a wind speed of 1,2 m/s and has a cut-out wind speed of 30 m/s.

What is wind energy?

wind energy being at the forefront. Wind energy refers to the technology that converts the air's motion into mechanical energy, usually for electricity production. Wind energy captures the natural air in our environment and converts the ai 's motion into mechanical energy. The wind is caused by.

What is a kwt300 wind turbine?

The KWT300 is designed as a Class S wind turbine, aligning with the specific wind conditions in Japan, which is characterized by the influence of typhoons and gusts of wind. It is designed based on average wind speed of Class II, the reference wind speed of Class I, and applying the turbulence intensity parameter of the highest standard value.



300kw wind power generation system design



[\(PDF\) Design of Wind Turbine](#)

Report describes the design process of a wind turbine integrated to a synchronous generator, fulfilling the prescribed design requirements in section 1 for both turbine and generator operation.

[Free Quote](#)



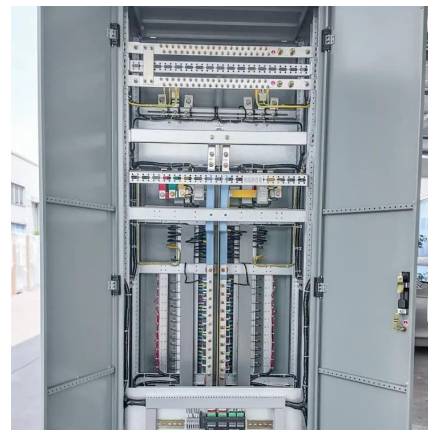
[Wind energy: Mid-Size Wind Turbine ...](#)

By integrating wind energy to the existing diesel power generation system, it will dramatically reduce the fuel usage as well as CO2 emission. KWT300 is also suitable for supplying clean energy to factories, schools and other ...

Optimal Design of Wind-Solar complementary power generation systems

This paper proposes constructing a multi-energy complementary power generation system integrating hydropower, wind, and solar energy. Considering capacity configuration ...

[Free Quote](#)



[\(PDF\) Design of Wind Turbine](#)

Report describes the design process of a wind turbine integrated to a synchronous generator, fulfilling the prescribed design requirements in section 1 for both turbine and ...

[Free Quote](#)



[Free Quote](#)



[Design and Energy Estimates for Wind Farms](#)

Abstract- Wind power generation is becoming increasingly common in the portfolio mix of many utilities around the world. Wind turbines are presently available up to 5MW. ...

[Free Quote](#)



Windkraft Zürcher 300 kW

Description The wind turbine 300 kW is a production of Windkraft System Zürcher AG, a manufacturer from Switzerland. This manufacturer has been in business since 2017. The rated ...

[Free Quote](#)



Blogs-300KW wind turbine generation system customize-quality 500KW wind

lianbang Main business 300KW wind turbine generation system customize,quality 500KW wind turbine generation system. There are many varieties, good quality and complete specifications

[Free Quote](#)

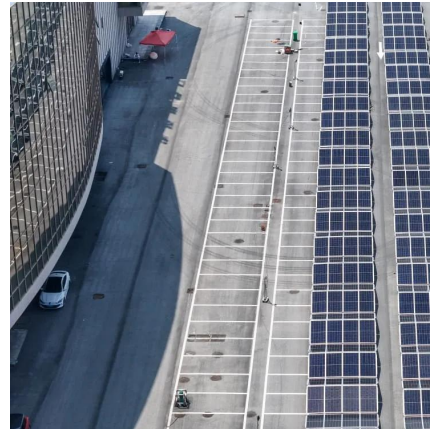




[Medium-Sized Wind Turbine KWT300](#)

In Environmental Business, Komaihaltec Inc. offers medium-sized wind turbines manufactured in Japan suitable for self-consumption and distributed generation, as well as overhead solar power generation systems.

[Free Quote](#)



[Medium-Sized Wind Turbine KWT300 , Products , Wind Power ...](#)

In Environmental Business, Komaihaltec Inc. offers medium-sized wind turbines manufactured in Japan suitable for self-consumption and distributed generation, as well as ...

[Free Quote](#)

[Construction of Wind Power Generation System Control and...](#)

With the development of wind turbine control technology, people's utilization rate of wind energy has been continuously improved, and the scale of wind farms has also been ...

[Free Quote](#)



[Wind energy: Mid-Size Wind Turbine "KWT300" \(300kW\)](#)

By integrating wind energy to the existing diesel power generation system, it will dramatically reduce the fuel usage as well as CO2 emission. KWT300 is also suitable for supplying clean ...

[Free Quote](#)



Contact Us

For catalog requests, pricing, or partnerships, please visit:
<https://www.getonco.co.za>

Scan QR Code for More Information



<https://www.getonco.co.za>