

36 AC inverter 220





Overview

What is a 36 volt inverter?

Looking for a 36 V inverter is often harder than finding a 12 V or 24V inverter since they are less common. Although not used as often, they still serve important roles in mid-range power applications. All of these higher-voltage systems should be used when powering equipment that draws over 3,000 W. Higher voltage is important for several reasons.

What is a wzrelb 3000W 36V 120V pure sine wave inverter?

The WZRELB 3000W 36V 120V Pure Sine Wave Inverter delivers stable and clean AC power for sensitive electronics and high-demand appliances. It provides continuous 3000W output and 6000W peak surge capacity and efficiently converts DC power from a 36V battery system into reliable 120V electricity.

What is a 3000W pure sine wave inverter?

The 3000W Pure Sine Wave Inverter (3000W36V) converts 36V DC power to efficient 110V/120V AC electricity. It is a good choice for cars, solar, and off-grid setups. The continuous output of 3000W and a surge capacity of 6000W provides great performance for everyday appliances and high demand start-up devices.

How many WVC solar inverters are left in stock?

Only 20 left in stock - order soon. 1400W WVC Waterproof Solar Grid Tie Inverter, DC to AC Micro Inverters, for 30v or 36v Solar Panels, for Residential and Small Commercial Environments. Only 4 left in stock - order soon.



36 AC inverter 220



**DC 12V 24V 36V 48V to AC 110V 220V 240V 380V
Power Inverter DC to AC**

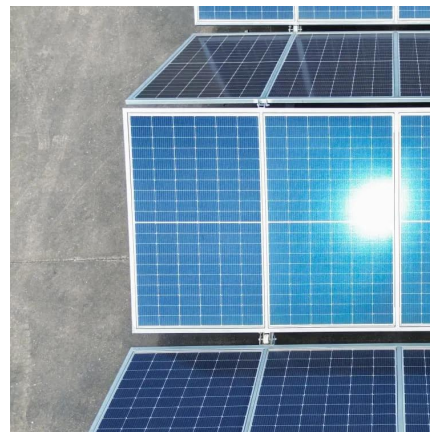
DC 12V 24V 36V 48V to AC 110V 220V 240V 380V Power Inverter DC to AC Converter Power Supply Home, Find Details and Price about Inverter Converter from DC 12V 24V 36V 48V to ...

[Free Quote](#)

Converter 36V to 220V AC

A 36V to 220V AC converter (also known as a DC-AC inverter) is an essential device for converting direct current (DC) power from a 36-volt battery system into usable alternating ...

[Free Quote](#)



Inverter 36V 220V

Inverter converts direct current (DC) from a battery into alternating current (AC), which is what most household appliances use. The inverter will convert the 36V from the battery into 220V AC.

[Free Quote](#)



[Power Pure Sine Wave Inverter 2500W DC 36V To AC220-240V](#)

Buy Power Pure Sine Wave Inverter 2500W DC 36V To AC220-240V: Power Inverters - Amazon
FREE DELIVERY possible on eligible purchases

[Free Quote](#)



[Dc Ac Pure Sine Wave Inverter 12v 24v 36v 48v 110v 220v ...](#)

Designed for versatility, these inverters support input DC voltages of 12V, 24V, and 48V, delivering a stable AC output of 220V with continuous power capabilities of up to 3000W. With ...

[Free Quote](#)



[36 Volt Input 220 Volt AC Output Inverter](#)

Types of 36-Volt Input 220-Volt AC Output Inverters A 36-volt input 220-volt AC output inverter is an essential power conversion device that transforms DC electricity from a 36V battery or ...

[Free Quote](#)



[Hybrid Powerful inverter 36v to 220v for Varied Uses](#)

Find reliable inverter 36v to 220v solutions for your power needs. Shop top-quality inverters from trusted suppliers. Enjoy pure sine wave and efficient conversion.

[Free Quote](#)





Contact Us

For catalog requests, pricing, or partnerships, please visit:
<https://www.getonco.co.za>

Scan QR Code for More Information



<https://www.getonco.co.za>