

Ax7 inverter power





Overview

An example is a phase inverter, which drives the power tubes. In a phase inverter, one of the triodes drives one power tube, and the other triode drives the other power tube. You do not want a 12AX7 with.

Can a 12AX7 be used as a phase inverter?

If you use a 12AT7 in a phase inverter circuit designed for a 12AX7, you will get less drive from your power section. This of course also depends on the power tubes being used, as some are easier to drive than others. For example, a 6L6GC requires a decent signal to push them to very high volumes.

Can a 12AX7 be used as a split-load inverter?

Yes, but it looks like a 12AX7 is used as a split-load inverter, with a 12AT7 boosting each drive signal (though not in a diff-amp configuration, which seems odd), and a 12BH7 as a cathode follower to drive the relatively heavy load imposed by 3x 6550's max grid resistance. Build problems?

Read this first. Re: The Phase inverter!.

Why does a 12AT7 have a higher impedance than a phase inverter?

Because the phase inverter was not designed to deliver this grid current, the phase inverter sees a much heavier load when the output tubes distort. Because the 12AT7 has a lower internal impedance, it is better able to cope with the lowering impedance of the output tube grids when they distort.

Which is better 12AX7 or 12AT7?

Both types make great phase inverter tubes, but only if the circuit is optimal for them. A 12AT7 can drive a power section just as well as or better than a 12AX7. Especially when the circuit is designed around its electrical characteristics.



Ax7 inverter power



[Groove Tubes GT SAG AX7 MPI:Guitars, Pedals Amps Effects](#)

Groove Tubes GT SAG-AX7-MPI Matched Triode Tube is a 12AX7 used in the Phase inverter stage of your guitar amplifier where optimum response from your push-pull output amplifier is ...

[Free Quote](#)

[10 Best 12AX7 Tubes: The Good, Bad, and Epic](#)

The Phase Inverter (usually the 12AX7 closest to your power tubes) is the conductor of this orchestra. It takes your preamp signal, flips it, and drives the power section.

[Free Quote](#)



Ax7 inverter voltage

Smart Hybrid Inverter Systems Our smart hybrid inverters offer seamless integration between solar power systems, energy storage units, and the grid. Equipped with intelligent algorithms, ...

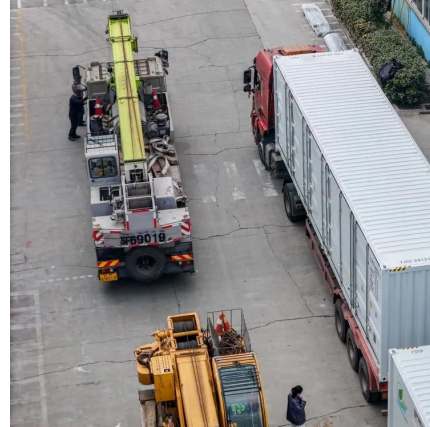
[Free Quote](#)



[Everything you need to know about 12AX7 Tubes](#)

An example is a phase inverter, which drives the power tubes. In a phase inverter, one of the triodes drives one power tube, and the other triode drives the other power tube. You do not ...

[Free Quote](#)



[12AX7 vs 12AT7: Tube Showdown](#)

12AX7 vs 12AT7 As a Phase Inverter Both types make great phase inverter tubes, but only if the circuit is optimal for them. A 12AT7 can drive a power section just as well as or ...

[Free Quote](#)



[12AU7 vs 12AX7: The Difference You Need To ...](#)

Phase Inverter and Power Amplification Moving on to the phase inverter and power tubes, your 12AU7 and 12AX7 choices continue to play essential roles. The 12AX7 can push the power tubes harder due to its higher plate ...

[Free Quote](#)



[Groove Tubes GT SAG AX7 MPI:Guitars, ...](#)

Groove Tubes GT SAG-AX7-MPI Matched Triode Tube is a 12AX7 used in the Phase inverter stage of your guitar amplifier where optimum response from your push-pull output amplifier is desired.

[Free Quote](#)



[Phase inverter, 12AT7 or 12AX7?](#)



The phase inverter in my amp is a 6922. A better choice for PI in my opinion, but a different genetic pool to the 12A*7 series. In your amp, I would favour a 12AT7 over 12AX7 for ...

[Free Quote](#)



[ax7 \(instead of at7\) in phase inverter?](#)

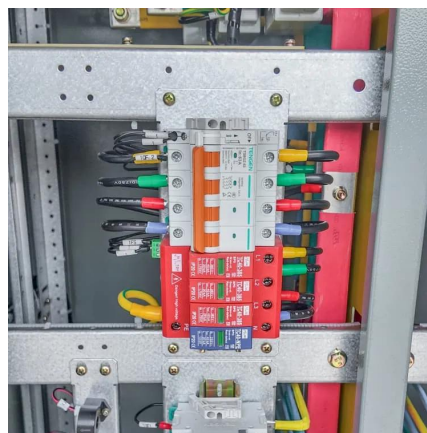
I prefer the sound of the 12at7's in the phase inverter, more output tube crunch available because of how current they can handle, and they cause less preamp tube distortion ...

[Free Quote](#)

[10 Best 12AX7 Tubes: The Good, Bad, and ...](#)

The Phase Inverter (usually the 12AX7 closest to your power tubes) is the conductor of this orchestra. It takes your preamp signal, flips it, and drives the power section.

[Free Quote](#)



[12AU7 vs 12AX7: The Difference You Need To Know](#)

Phase Inverter and Power Amplification Moving on to the phase inverter and power tubes, your 12AU7 and 12AX7 choices continue to play essential roles. The 12AX7 can push the power ...

[Free Quote](#)

[The Phase inverter! The most important tube in your amp?](#)



However, at some point, the apparent input impedance of the output tube grids will drop low enough to drag down the 12AT7 too. Depending on the specific design of the ...

[Free Quote](#)



Tube gurus and experts

A 12AT7 can replace a 12AX7 at the phase inverter (actually drives the power tubes harder), but shouldn't be used as a replacement gain stage. A 12AU7 also should only be ...

[Free Quote](#)



12AX7 vs 12AT7: Tube Showdown.

12AX7 vs 12AT7 As a Phase Inverter Both types make great phase inverter tubes, but only if the circuit is optimal for them. A 12AT7 can drive a power section just as well as or better than a 12AX7. Especially ...

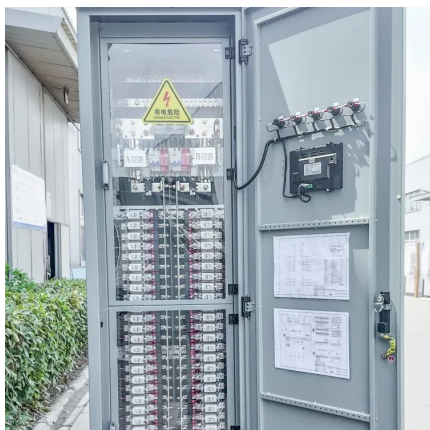
[Free Quote](#)



The Phase inverter! The most important tube ...

However, at some point, the apparent input impedance of the output tube grids will drop low enough to drag down the 12AT7 too. Depending on the specific design of the inverter/amp, the heavy load ...

[Free Quote](#)





Contact Us

For catalog requests, pricing, or partnerships, please visit:
<https://www.getonco.co.za>

Scan QR Code for More Information



<https://www.getonco.co.za>