

# **Base station battery connection power cable**





## Overview

---

What makes a telecom battery pack compatible with a base station?

Compatibility and Installation Voltage Compatibility: 48V is the standard voltage for telecom base stations, so the battery pack's output voltage must align with base station equipment requirements. Modular Design: A modular structure simplifies installation, maintenance, and scalability.

What is a battery cable?

Battery cables play a vital role in connecting batteries to key components such as inverters, charge controllers and junction boxes in energy storage systems. Products include 1/0 AWG red and black copper welded cables for high current connections between batteries and 2 AWG battery starter cables designed for portable 12V applications.

Which battery is best for telecom base station backup power?

Among various battery technologies, Lithium Iron Phosphate (LiFePO<sub>4</sub>) batteries stand out as the ideal choice for telecom base station backup power due to their high safety, long lifespan, and excellent thermal stability.

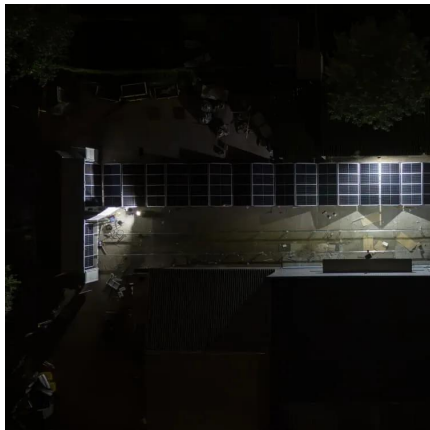
What are the different types of battery cables?

Battery cables connect batteries to inverters, charge controllers, junction boxes in energy storage systems. Types include 1/0 AWG red & black copper welding cable for high current links between batteries, 2 AWG battery jump start cable for portable 12V applications.



## Base station battery connection power cable

---



### [Outdoor base station battery module](#)

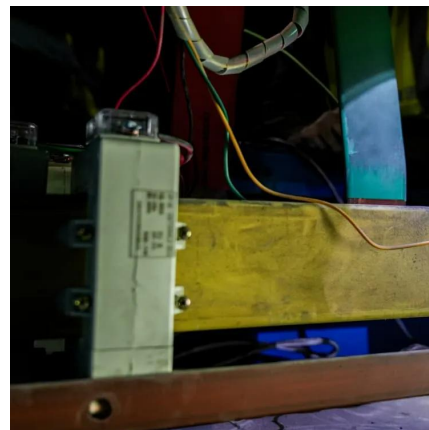
Big Data Product With the widespread deployment of its IDC hardware systems to all over the world, the shipments of computing power and communication centers rank among the top ...

### [Free Quote](#)

### [GX1000 Power Pack w/ 2 Extended-Life GPS ...](#)

Extend the operational time of your Trimble base station, rover, or data collector with the GCP GX1000 Power Pack. Includes quick-connect ...

### [Free Quote](#)



### **Cables**

Adapter Cable to Connect Trimble to 1200 TS GEB / Settop Battery II Power Cable Settop Battery Cable to PDL a 1200 Settop M1-Com2 to ADL Vantage 35W Converter Cable 2.5 m Hirose 6 ...

### [Free Quote](#)



### [Trimble Replacement Power Cable: For RTK Base Stations](#)

Explore the Trimble Replacement Power Cable. Connects to 12-volt sources. 3m/10ft long with 7-pin Lemo connector to alligator style battery clips.

### [Free Quote](#)



[Wholesale base station jumper cable To Extend Power Cord ...](#)

Access power anywhere in your home by extending the length of your base station jumper cable. Shop at Alibaba for wholesale power cables that suit your needs.

[Free Quote](#)



[Power supply unit with DC connection cable for base station](#)

The power supply unit G7-A0Z0-0019 is suitable for the 4-way battery charging station and the base station. It offers an input voltage of AC 100 V to 240 V and delivers an output voltage of ...

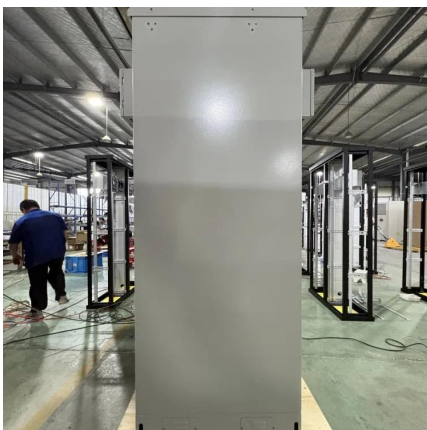
[Free Quote](#)



[Common ways to set up a base station](#)

Each day, mount the GNSS antenna on the GNSS end of the T-Bar and the radio antenna on the radio end of the T-Bar. Connect the antennas to the receiver using the ...

[Free Quote](#)



**GX1000 Power Pack w/ 2 Extended-Life GPS**





### Rover/MT1000 Replacement Batteries

Extend the operational time of your Trimble base station, rover, or data collector with the GCP GX1000 Power Pack. Includes quick-connect cables, USB-C charging port, and two extended ...

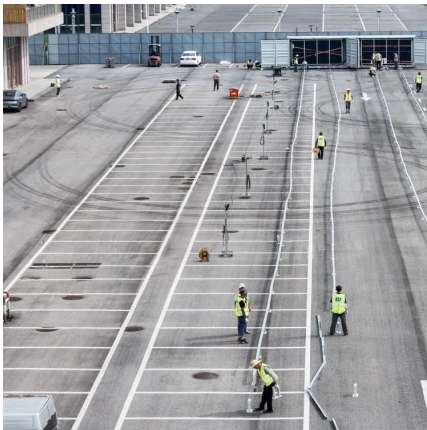
[Free Quote](#)



[Telecom Base Station Backup Power Solution: ...](#)

Discover the 48V 100Ah LiFePO4 battery pack for telecom base stations: safe, long-lasting, and eco-friendly. Optimize reliability with our design guide.

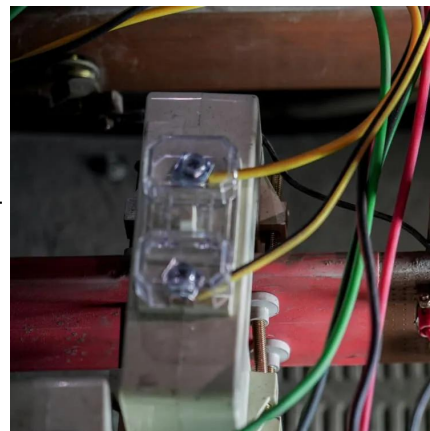
[Free Quote](#)



[Telecom Base Station Backup Power Solution: Design Guide ...](#)

Discover the 48V 100Ah LiFePO4 battery pack for telecom base stations: safe, long-lasting, and eco-friendly. Optimize reliability with our design guide.

[Free Quote](#)



[Battery Cable and Cable Extension for Reliable Energy](#)

Battery cables connect batteries to inverters, charge controllers, junction boxes in energy storage systems. Types include 1/0 AWG red & black copper welding cable for high current links ...

[Free Quote](#)



[Power supply unit with DC connection cable ...](#)



The power supply unit G7-A0Z0-0019 is suitable for the 4-way battery charging station and the base station. It offers an input voltage of AC 100 V to 240 V and delivers an output voltage of DC 12 V/4.16 A with an output of ...

[Free Quote](#)



#### Cables

Adapter Cable to Connect Trimble to 1200 TS  
GEB / Settop Battery II Power Cable Settop  
Battery Cable to PDL a 1200 Settop M1-Com2 to  
ADL Vantage 35W Converter Cable 2.5 m Hirose  
6 Pin to PC USB Cable

[Free Quote](#)

## Contact Us

---

For catalog requests, pricing, or partnerships, please visit:  
<https://www.getonco.co.za>

**Scan QR Code for More Information**



<https://www.getonco.co.za>