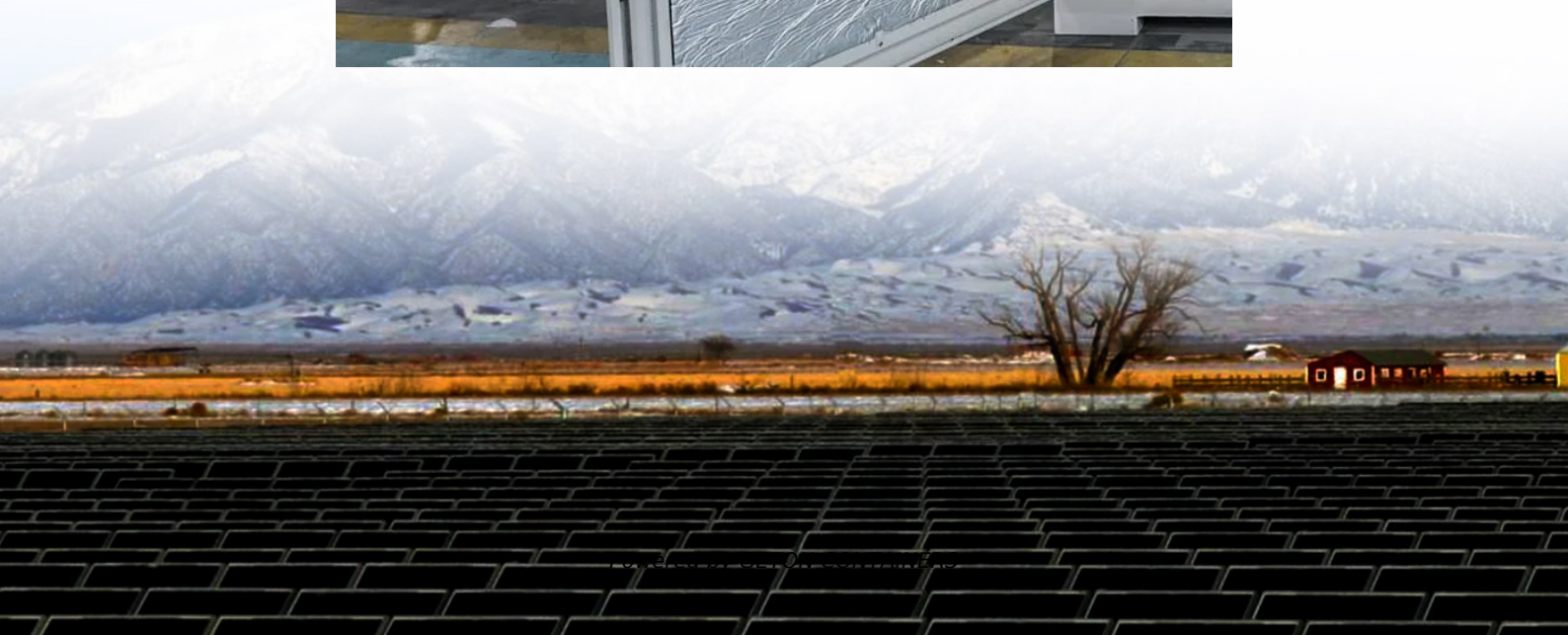


# **Base station communication tower safety distance**





## Overview

---

How far does a cell phone tower fall from a base station?

In most cases, having a cell phone tower on the roof of your building will create a shadow zone immediately underneath it. This zone is therefore exposed to much less radiation. Consequently, a tower's primary "radiation lobe" (main beam) falls around 50-300 meters ( 0.03 - 0.18 miles) from the base station mast at a 5-10° angle.

How far away are mobile towers safe?

The distance needed to reduce exposures down to the General Public Precautionary Level of 100 microwatts per meter squared ( $\mu\text{W}/\text{m}^2$ ) is often around a quarter of a mile (1320 feet or 400 meters) or more. Thus, If you find mobile towers located a minimum of 400 meters (0.24 miles) away, you are most likely safe.

Do mobile phones need a base station?

Mobile phones and other mobile devices require a network of base stations in order to function. The base station antennas transmit and receive RF (radio frequency) signals, or radio waves, to and from mobile phones near the base station. Without these radio waves, mobile communications would not be possible.

How much exposure can a radio base station have?

On the ground, in houses, and other places where people reside, the exposure levels from radio base stations are normally below 1 percent of the limits. Only in the close vicinity of the antennas can the exposure limits sometimes be exceeded.



## Base station communication tower safety distance

---



[How Far Should You Live from a Cell Phone Tower? Insights ...](#)

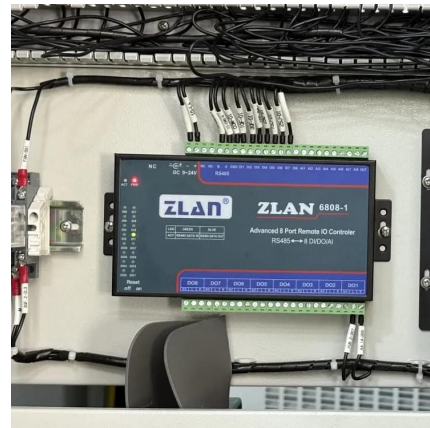
Explore how far you should live from a cell phone tower for safe EMF exposure levels. Learn what Israeli, European, and U.S. studies say about health risks and ...

[Free Quote](#)

[Mobile phone base stations: radio waves and health](#)

Summary Base stations transmit and receive radio waves to connect the users of mobile phones and other devices to mobile communications networks. The strength of the ...

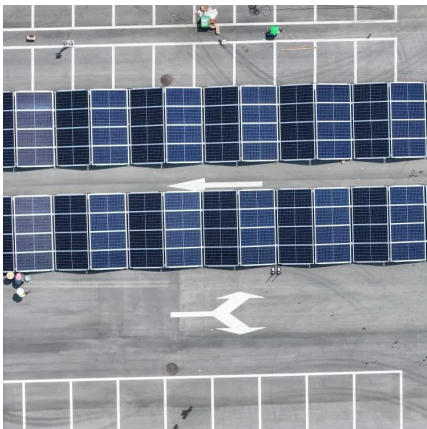
[Free Quote](#)



[What is the Safe Distance From Cell Towers?](#)

What's the Safe Distance From a Mobile Phone Tower? Radiation energy from a mobile tower decreases with distance. It is usually at its strongest within a 50- meter distance from the antenna, and the intensity keeps ...

[Free Quote](#)



[Safe EMF Distance From Cellphone Towers Calculator](#)

Why Distance From Cell Towers Matters  
Radiofrequency radiation from cell towers decreases rapidly with distance. However, close proximity to towers--especially those using ...

[Free Quote](#)





[Communication Base Station Safety Standards , Huijue ...](#)

As 5G deployments accelerate globally, communication base station safety standards face unprecedented challenges. Did you know that 68% of urban base stations now operate ...

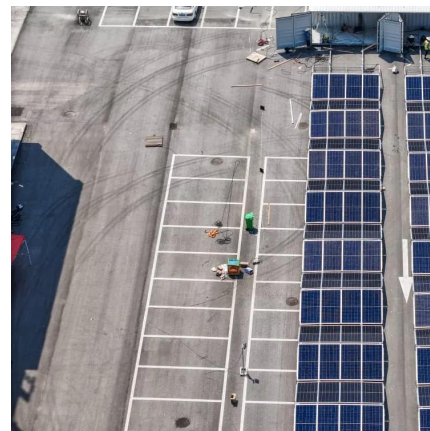
[Free Quote](#)



[What is the Safe Distance From Cell Towers?](#)

What's the Safe Distance From a Mobile Phone Tower? Radiation energy from a mobile tower decreases with distance. It is usually at its strongest within a 50- meter distance from the ...

[Free Quote](#)



[Safe Distances for Avoiding Mobile Tower Radiation](#)

So, what are safe distances for avoiding mobile tower radiation? While all mobile and cell phone towers give out different levels of radiation, a minimum safe distance to avoid the ...

[Free Quote](#)



[Mobile Phone Base Stations EMF / Health Fact Pack](#)



A base station is comprised of several different components - including an equipment shelter, a tower or mast which provides the necessary height to give better ...

[Free Quote](#)



[Evaluated minimum safe distances for mobile ...](#)

In Table 1 are presented the minimum safe distances for GSM 900, GSM 1800 and 3G base stations, in terms of public and occupational exposure.

[Free Quote](#)



#### **Safety Distance Calculations for Macrocell Mobile Base Station ...**

Wireless mobile communication networks have become essential for human life. A great booming and huge investments are devoted to develop the services without taking into ...

[Free Quote](#)



[Mobile phone base stations: radio waves and health](#)

Wireless mobile communication networks have become essential for human life. A great booming and huge investments are devoted to develop the services without taking into ...

[Free Quote](#)



[Safe Distances for Avoiding Mobile Tower ...](#)



So, what are safe distances for avoiding mobile tower radiation? While all mobile and cell phone towers give out different levels of radiation, a minimum safe distance to avoid the worst of it is under 150ft, and after ...

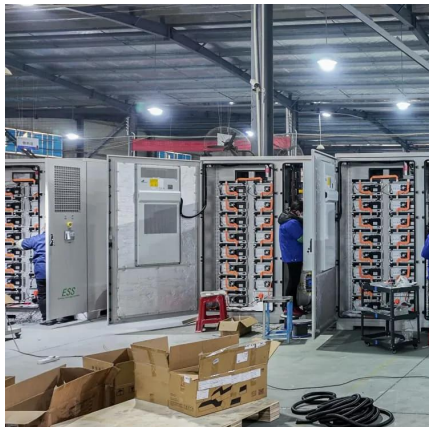
[Free Quote](#)



#### **Evaluated minimum safe distances for mobile-communication base stations**

In Table 1 are presented the minimum safe distances for GSM 900, GSM 1800 and 3G base stations, in terms of public and occupational exposure.

[Free Quote](#)



## **Contact Us**

For catalog requests, pricing, or partnerships, please visit:  
<https://www.getonco.co.za>

**Scan QR Code for More Information**



<https://www.getonco.co.za>