

Base station communication tower transfer





Overview

What is a base transceiver station?

One key component in mobile networks is the Base Transceiver Station, often abbreviated as BTS. But what is base transceiver station, and why is it so crucial to the functioning of our mobile phones?

At its core, a BTS is the equipment that facilitates wireless communication between the mobile network and your phone.

What is a Base Transceiver Station (BTS)?

A base transceiver station (BTS) is a critical network component that serves as the primary hardware interface between mobile devices and the cellular network, facilitating wireless communication through radio transmission and reception within a defined area known as a cell.

What is a base station in telecommunications?

In telecommunications, a base station is a fixed transceiver that serves as the main communication point for one or more wireless mobile client devices. It not only connects wireless devices to each other but also links them to other networks or devices, often through dedicated high-bandwidth wired or fiber optic connections.

What are base stations & cell towers?

These structures facilitate the transmission and reception of signals between mobile devices and the wider network, enabling voice calls, text messages, and data services. Understanding the role and technology behind base stations and cell towers is key to appreciating how mobile networks operate and evolve to meet growing demands. Base Stations



Base station communication tower transfer



Base Transceiver Station

Introduction to Base Transceiver Station (BTS) in Computer Science Context A base transceiver station (BTS) is a critical network component that serves as the primary hardware interface ...

[Free Quote](#)

[How Base Transceiver Station \(BTS\) Works](#)

In the world of wireless communication, the Base Transceiver Station (BTS) acts as the backbone of cellular networks. It facilitates the wireless connection between mobile ...

[Free Quote](#)



[The Base Station in Wireless Communications: The Key to ...](#)

Base station, also known as BTS (Base Transceiver Station), is a key device in wireless communication systems such as GSM. Equipped with an electromagnetic wave ...

[Free Quote](#)



[Understanding the Basics: What is a Base Transceiver Station?](#)

In today's digitally connected world, understanding the technology that makes communication possible is more important than ever. One key component in mobile networks ...



[Free Quote](#)



[Application Note: Distributed Base Stations](#)

Distributed Base Stations The most popular type of Wireless Base Station deployment (cell site) consists of a Base Transceiver Station (BTS) located in close proximity to the antenna tower.

...

[Free Quote](#)



[Exploring communication base stations](#)

The specific working principles of different types of base stations, such as 2G, 3G, 4G, and 5G base stations, may vary depending on the communication technology standards ...

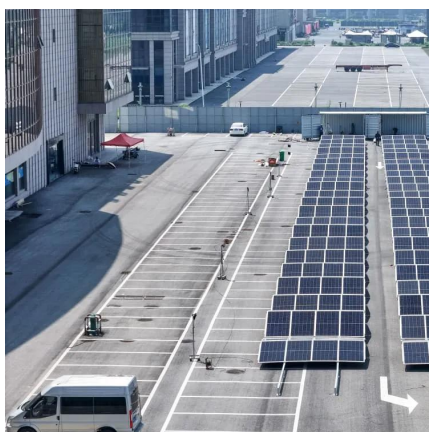
[Free Quote](#)



[Base Transceiver Stations \(BTS\)](#)

In the world of wireless communication, Base Transceiver Stations (BTS) play a crucial role in ensuring seamless connectivity, especially within buildings. Shared Access explores what a ...

[Free Quote](#)





[Base Stations and Cell Towers: The Pillars of Mobile ...](#)

Base stations and cell towers are critical components of cellular communication systems, serving as the infrastructure that supports seamless mobile connectivity. These ...

[Free Quote](#)



Contact Us

For catalog requests, pricing, or partnerships, please visit:
<https://www.getonco.co.za>

Scan QR Code for More Information



<https://www.getonco.co.za>