

Base station power generation in the communications industry





Overview

How much energy does a communication base station use a day?

A small-scale communication base station communication antenna with an average power of 2 kW can consume up to 48 kWh per day. 4,5,6 Therefore, the low-carbon upgrade of communication base stations and systems is at the core of the telecommunications industry's energy use issues.

How does a base station work?

In this scheme, the base station is powered by solar panels, the electrical grid, and energy storage units to ensure the stability of energy supply. When there is a surplus of energy supply, the excess electricity generated by the solar panels is stored in the energy storage units.

What is a base station energy optimization?

The optimization covers configurations of base station energy supply equipment (e.g., investment in photovoltaics [PV] and energy storage capacity) and operational locations (e.g., urban vs. rural deployments).

Can low-carbon communication base stations improve local energy use?

Therefore, low-carbon upgrades to communication base stations can effectively improve the economics of local energy use while reducing local environmental pollution and gaining public health benefits. For this research, we recommend further in-depth exploration in three areas for the future.



Base station power generation in the communications industry



[5G and energy internet planning for power and communication ...](#)

Our research addresses the critical intersection of communication and power systems in the era of advanced information technologies. We highlight the strategic ...

[Free Quote](#)

[The Importance of Renewable Energy for ...](#)

Installations of telecommunications base stations necessary to address the surging demand for new services are traditionally powered by conventional energy sources, which results in massive

[Free Quote](#)



[The Unsung Hero of Telecom Energy: Why Base Station Power ...](#)

EverExceed's high-efficiency base station power solutions combine smart monitoring, energy optimization, and renewable integration to help operators reduce costs, ...

[Free Quote](#)



Distributed Power Plant

This solution overcomes the industry's long-standing challenges, such as the difficulties of laying power lines for traditional communication base stations, high energy consumption, and high ...



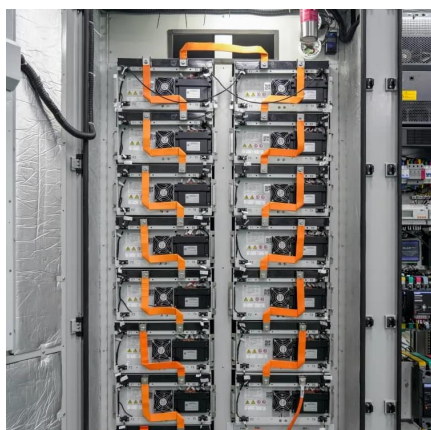
[Free Quote](#)



[Low-carbon upgrading to China's communications base stations ...](#)

It is important for China's communications industry to reduce its reliance on grid-powered systems to lower base station energy costs and meet nationa...

[Free Quote](#)



[Virtual Power Plants: Driving Green Innovation in Telecom...](#)

Base stations are evolving into "power plants!" With the widespread adoption of 5G technology, the number of telecom sites is increasing, leading to higher energy consumption. ...

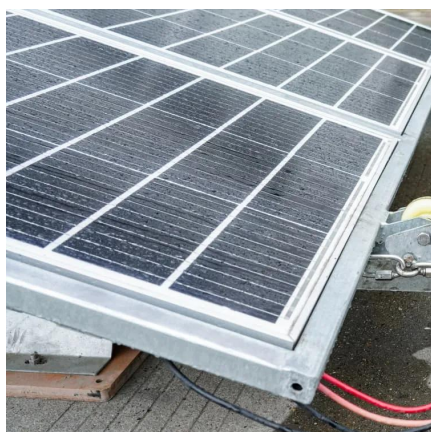
[Free Quote](#)



[Communication Base Station Energy Storage Systems](#)

Powering Connectivity in the 5G Era: A Silent Energy Crisis? As global 5G deployments surge to 1.3 million sites in 2023, have we underestimated the energy storage demands of modern ...

[Free Quote](#)



[Communication Base Station Power Systems Market](#)



5G Network Expansion Reshapes Base Station Power Requirements The deployment of next-generation 5G networks fundamentally alters the technical demands ...

[Free Quote](#)



The Importance of Renewable Energy for Telecommunications Base Stations

Installations of telecommunications base stations necessary to address the surging demand for new services are traditionally powered by conventional energy sources, ...

[Free Quote](#)

[Telecom Base Station PV Power Generation System ...](#)

The communication base station installs solar panels outdoors, and adds MPPT solar controllers and other equipment in the computer room. The power generated by solar ...

[Free Quote](#)



[Low-carbon upgrading to China's communications base ...](#)

In brief Wang et al. propose a nationwide low-carbon upgrade strategy for China's communication base stations. Using real-world data and predictive modeling, the study shows ...

[Free Quote](#)



Contact Us

For catalog requests, pricing, or partnerships, please visit:
<https://www.getonco.co.za>

Scan QR Code for More Information



<https://www.getonco.co.za>