

Base station power output refers to





Overview

What is the output power of a base station?

Output power of the Base Station is the mean power delivered to a load with resistance equal to the nominal load impedance of the transmitter. The maximum total output power, P_{max} , of the Base Station is the mean power level measured at the antenna connector during the transmitter ON period in a specified reference condition.

What is base station Power?

Base station power refers to the output power level of base stations, which is defined by specific maximum limits (24 dBm for Local Area base stations and 20 dBm for Home base stations) and includes tolerances for deviation from declared power levels, as well as specifications for total power control dynamic range. How useful is this definition?

.

What is the maximum base station Power?

Maximum base station power is limited to 24 dBm output power for Local Area base stations and to 20 dBm for Home base stations, counting the power over all antennas (up to four). There is no maximum base station power defined for Wide Area base stations.

What is a base station & a PV powering Unit?

The base station uses radio signals to connect devices to network as a part of traditional cellular telephone network and solar powering unit is used to power it. The PV powering unit uses solar panels to generate electricity for base stations in areas with no access to grid or areas connected to unreliable grids.



Base station power output refers to



[Power flow in the Base Station. , Download Scientific Diagram](#)

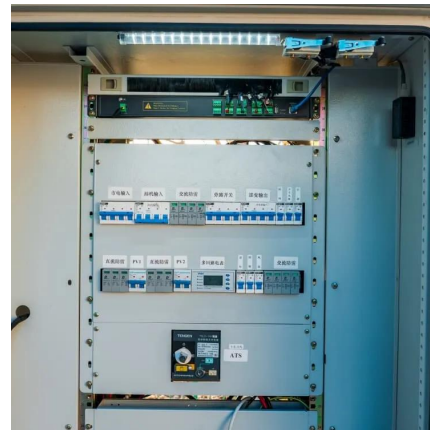
The notation $P_{X \text{ in}}$ and $P_{X \text{ out}}$ refers to the input and output power of the device X. N A denotes the number of sectors in a BS. Fig. 1 illustrates the BS structure and the power flow.

[Free Quote](#)

[WHAT IS THE OUTPUT POWER OF A BASE STATION?](#)

What is the function of the base station power cabinet The base station power cabinet is a key equipment ensuring continuous power supply to base station devices, with LLVD (Load Low ...

[Free Quote](#)



[Ravi Shekhar on LinkedIn: Max output power of base station](#)

Maximum output power of Base Station Total output power refers to the maximum power level a 5G base station can transmit across its assigned frequency range. <https://lnkd/ds7sJWHR> ...

[Free Quote](#)



Power Base Station

The transmitter characteristics define RF requirements for the wanted signal transmitted from the UE and base station, but also for the unavoidable unwanted emissions outside the transmitted ...



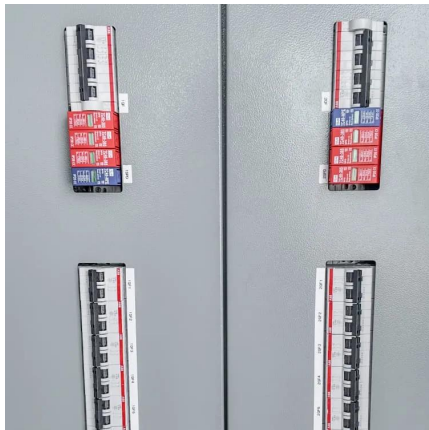
[Free Quote](#)



[Different English Terms for Telecom Base Station Power...](#)

Understand the different English terms for telecom base station power systems, including Telecom Base Station Power System, Cell Tower Energy Solution, Base Station ...

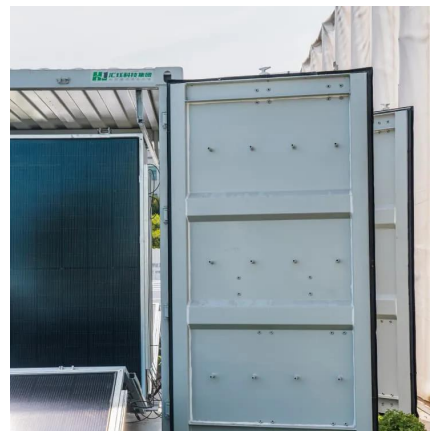
[Free Quote](#)



[Selecting the Right Supplies for Powering 5G Base Stations](#)

Additionally, these 5G cells will also include more integrated antennas to apply the massive multiple input, multiple output (MIMO) techniques for reliable connections. As a result, a ...

[Free Quote](#)



[Power flow in the Base Station.. Download ...](#)

The notation P_X in and P_X out refers to the input and output power of the device X . N_A denotes the number of sectors in a BS. Fig. 1 illustrates the BS structure and the power flow.

[Free Quote](#)





[6.2 Base Station output power - TechSpec](#)

6.2.1 Base Station maximum output power

6.2.1.1 Definition and applicability Output power of the Base Station is the mean power delivered to a load with resistance equal to the nominal load ...

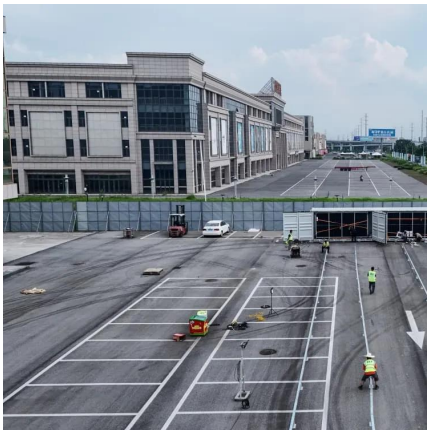
[Free Quote](#)



[Ensure Your Base Station Transmitter Complies with 5G ...](#)

Output power dynamics refers to the difference in levels when the base station is transmitting at maximum and minimum power levels. You should measure on the orthogonal ...

[Free Quote](#)



[Composition of power base stations](#)

What is base station Power? Base station power refers to the output power level of base stations, which is defined by specific maximum limits (24 dBm for Local Area base stations and 20 dBm ...

[Free Quote](#)



Contact Us

For catalog requests, pricing, or partnerships, please visit:
<https://www.getonco.co.za>



Scan QR Code for More Information



<https://www.getonco.co.za>