

Battery cabinet fuse current





Overview

What is a battery fuse?

A battery fuse is a crucial overcurrent protection device designed to interrupt the flow of electricity by melting when the current exceeds safe levels. This action protects your system from equipment damage, melted wires, and potential fire hazards.

How do battery fuses work?

Whether you're protecting a battery bank in a solar system, backup storage, or a car, understanding how battery fuses work is essential for any energy system. A battery fuse is a crucial overcurrent protection device designed to interrupt the flow of electricity by melting when the current exceeds safe levels.

What is Mersen Abat 15aA & AD fuses?

Mersen's ABAT line up is the latest addition to our DC Over-Current Protection (O.C.P.) portfolio developed to address Battery Electrical Storage System safety. The ABAT15AA & AD fuses have been specifically designed for 1500 VDC applications with current ratings from 100 to 500 A and according to IEC 60 269-7 fuse standard for battery protection.

Do lithium ion batteries need fuses?

The internal chemistry of lithium-ion cells requires faster-acting protection devices. While lead-acid batteries typically allow 5-10 seconds for fault clearance, lithium systems need fuses that can interrupt current within 0.1 seconds during severe short circuits.



Battery cabinet fuse current



[Fuse Design and Selection for Energy Storage ...](#)

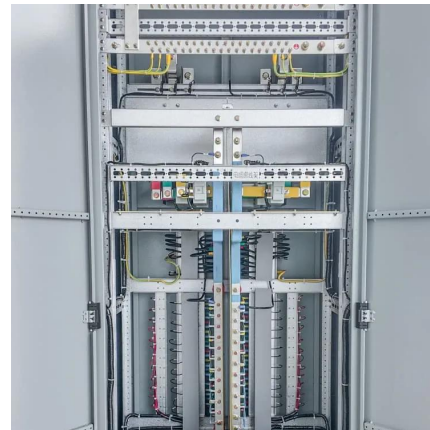
While high-voltage cabinet fuses can disconnect the cluster's terminals to prevent reverse current, intra- or inter-module grounding still forms a closed loop, rapidly leading to smoke or fire.

[Free Quote](#)

[Battery Fuse Guide for Circuit Protection - PowMr](#)

What does a battery fuse do A battery fuse is a crucial overcurrent protection device designed to interrupt the flow of electricity by melting when the current exceeds safe levels. ...

[Free Quote](#)



Fuses

Selecting a Fuse Select a fuse rated double as continuous current (e.g. initially take 400A fuse for 200A continuous current) and draw the load profile next to 50% of the fuse breaking current-time chart to check if pulse ...

[Free Quote](#)



[How to Properly Size Cables and Select Fuses for Lithium Battery](#)

Proper cable sizing and fuse selection for lithium batteries require calculating maximum current loads, understanding voltage drop limitations, and matching protection ...



[Free Quote](#)



[ABAT A fuses for battery rack protection](#)

Mersen's ABAT line up is the latest addition to our DC Over-Current Protection (O.C.P.) portfolio developed to address Battery Electrical Storage System safety. The ABAT15AA & AD fuses have been ...

[Free Quote](#)



[Lithium-Ion batteries and fuses , MG Knowledge Base](#)

Lithium-Ion battery system fuse information
Lithium-Ion batteries and fuses Every electrical system needs protection from potential abuse. A common way to protect electrical circuits against ...

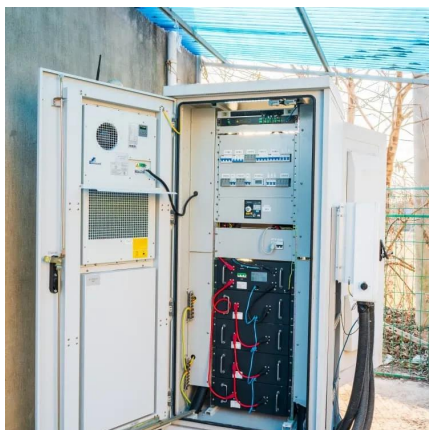
[Free Quote](#)



[Battery Cabinet Fuse Ratings: The Critical Interface Between ...](#)

The Hidden Costs of Improper Fuse Selection
Lithium-ion battery cabinets require fuse ratings that account for dynamic variables: peak fault currents (often exceeding 100kA), state-of ...

[Free Quote](#)





Lithium battery energy storage high voltage fuse

The fuses in a battery pack protect the battery and the other electrical components against high currents. There are special off-the-shelf components similar to 12V starter battery fuses.

...

[Free Quote](#)



ABAT A fuses for battery rack protection

Mersen's ABAT line up is the latest addition to our DC Over-Current Protection (O.C.P.) portfolio developed to address Battery Electrical Storage System safety. The ...

[Free Quote](#)

FUSES FOR BATTERY ENERGY STORAGE SYSTEMS

The fuse's short-circuit current rating must be higher than or equal to the fault current at the location where it is installed within the battery system. The system's time constant must be ...

[Free Quote](#)



Battery Fuse Guide for Circuit Protection

What does a battery fuse do A battery fuse is a crucial overcurrent protection device designed to interrupt the flow of electricity by melting when the current exceeds safe levels. This action protects your ...

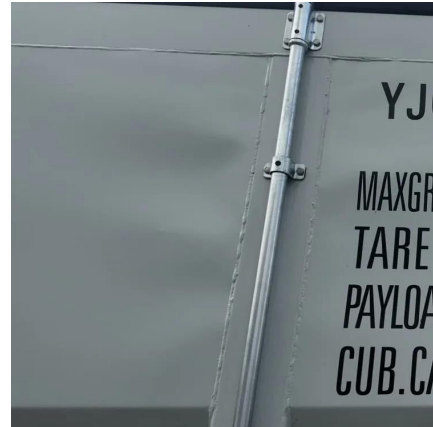
[Free Quote](#)



[Fuse Design and Selection for Energy Storage Battery Systems](#)

While high-voltage cabinet fuses can disconnect the cluster's terminals to prevent reverse current, intra- or inter-module grounding still forms a closed loop, rapidly leading to ...

[Free Quote](#)



Contact Us

For catalog requests, pricing, or partnerships, please visit:
<https://www.getonco.co.za>

Scan QR Code for More Information



<https://www.getonco.co.za>