

Can Xiaomi inverter 24v be used





Overview

Can you use a 12V inverter with a 24v battery?

No, you cannot directly use a 12V inverter with a 24V battery. Inverters are designed to match the voltage of the battery they are connected to. Using mismatched voltages can damage the inverter and 2. Is 12V to 24V more efficient than 120V to 24V?

Yes, converting from 12V to 24V is generally more efficient than converting from 120V to 24V.

What is a solar inverter 24V?

A solar inverter system is the backbone of any solar-powered setup. It converts the direct current (DC) generated by solar panels into alternating current (AC), which can be used by household appliances. The solar inverter 24v plays a crucial role in this process, ensuring that the power output is stable and efficient.

What is the best 12V inverter for a solar system?

Finding the best 12V inverter for your solar system can enhance performance and reliability. Renogy is a top choice in the solar industry, known for producing efficient and reliable products. The Renogy 1000W 12V Pure Sine Wave Inverter is highly recommended for its robust features and dependable performance.

How to install a 24V solar inverter?

Guidance of 24V system solar panels (36 V/100W solar panels as an example)
4. Inverter Installation Install the solar inverter 24v and connect it to the battery bank and solar panels. Follow the manufacturer's guidelines for proper setup. Mount the inverter in a well-ventilated area to prevent overheating.



Can Xiaomi inverter 24v be used



[How to Set Up a Reliable 24V Solar Inverter ...](#)

A solar inverter system is the backbone of any solar-powered setup. It converts the direct current (DC) generated by solar panels into alternating current (AC), which can be used by household appliances. ...

[Free Quote](#)

[Can the Inverter 3kw 24v be used for home ...](#)

The Inverter 3kw 24v can be configured to output the appropriate voltage for your region. This means that it can be used with home appliances regardless of the local voltage standard.

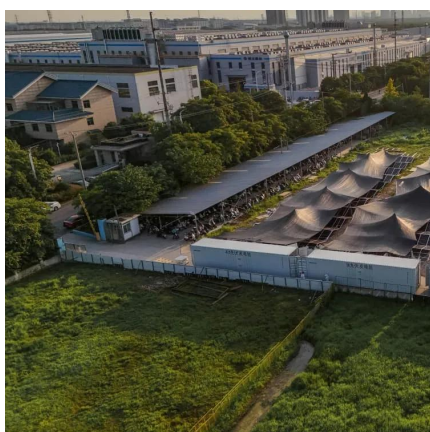
[Free Quote](#)



[How to Set Up a Reliable 24V Solar Inverter System: A Step ...](#)

A solar inverter system is the backbone of any solar-powered setup. It converts the direct current (DC) generated by solar panels into alternating current (AC), which can be used ...

[Free Quote](#)



[XIAOMI Inverter Pure Sine Wave DC 12v/24v To AC 220V ...](#)

Xiaomi's Inverter converts DC power from 12V/24V inputs to pure sine wave AC output, compatible with appliances up to 220V. The inverter supports high-frequency DC inputs (60V, ...



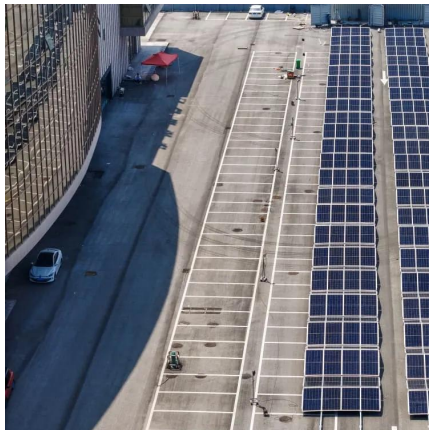
[Free Quote](#)



[Xiaomi Pure Sine Wave Inverter 1000W DC ...](#)

Tax excluded, add at checkout if applicable
Xiaomi Pure Sine Wave Inverter 1000W DC 12V/24V to AC 220V 50hz Intelligent High-Power Inverter Charger Adapter Universal Socket

[Free Quote](#)



[Xiaomi Pure Sine Wave Inverter 1000W DC 12V/24V to AC ...](#)

Tax excluded, add at checkout if applicable
Xiaomi Pure Sine Wave Inverter 1000W DC 12V/24V to AC 220V 50hz Intelligent High-Power Inverter Charger Adapter Universal Socket

[Free Quote](#)



[Can Xiaomi inverter use 24v](#)

No, you cannot run a 12V inverter on a 24V battery. This setup can cause failure and void the warranty. Inverters require specific input voltage for proper electrical compatibility. ...

[Free Quote](#)





[12V vs 24V Inverter: What's The Difference & Which is Better](#)

Torn between 12V and 24V inverters? Discover the key differences in efficiency, cost, and power capacity to determine which is better for your energy needs.

[Free Quote](#)



[MI-5116 , INVERTER 24VDC / 240VAC 2000W MODIFIED SINE ...](#)

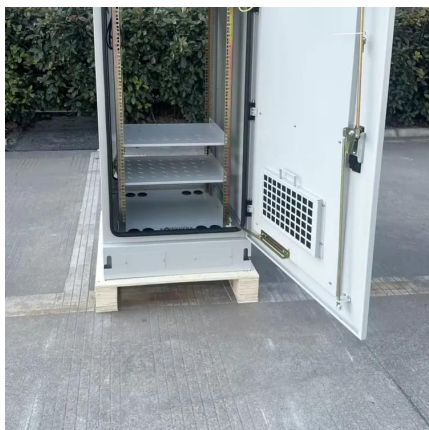
With its massive 2kW output, it can be used for running microwave ovens, large TVs and display systems etc. The inverter is ruggedly built and housed in a robust metal case with strong ...

[Free Quote](#)

[Can the Inverter 3kw 24v be used for home appliances?](#)

The Inverter 3kw 24v can be configured to output the appropriate voltage for your region. This means that it can be used with home appliances regardless of the local voltage standard.

[Free Quote](#)



[Can I Use A 24V Inverter With A 12V Battery? Compatibility ...](#)

In conclusion, while a 24V inverter cannot be used with a single 12V battery, achieving compatibility is possible through series connections. Understanding these ...

[Free Quote](#)



[MI-5116 , INVERTER 24VDC / 240VAC 2000W ...](#)

With its massive 2kW output, it can be used for running microwave ovens, large TVs and display systems etc. The inverter is ruggedly built and housed in a robust metal case with strong mounting brackets.

[Free Quote](#)



Contact Us

For catalog requests, pricing, or partnerships, please visit:
<https://www.getonco.co.za>

Scan QR Code for More Information



<https://www.getonco.co.za>