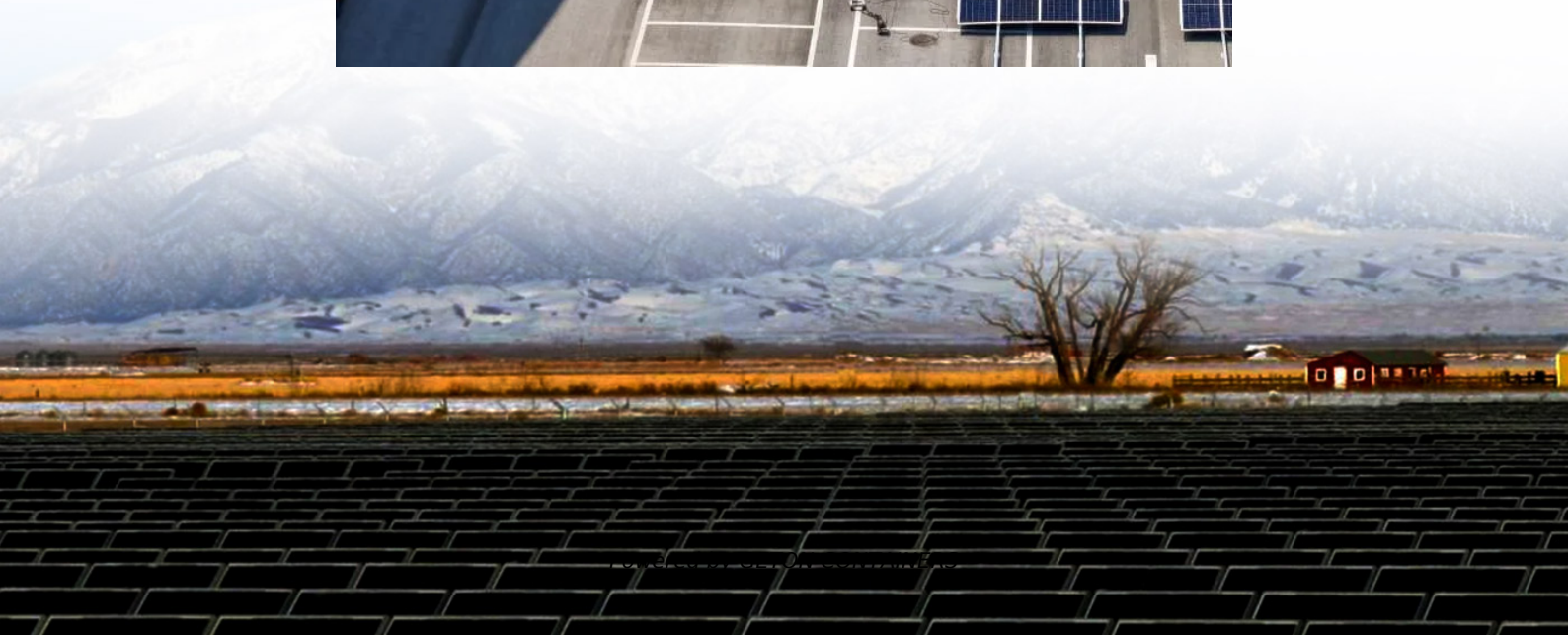
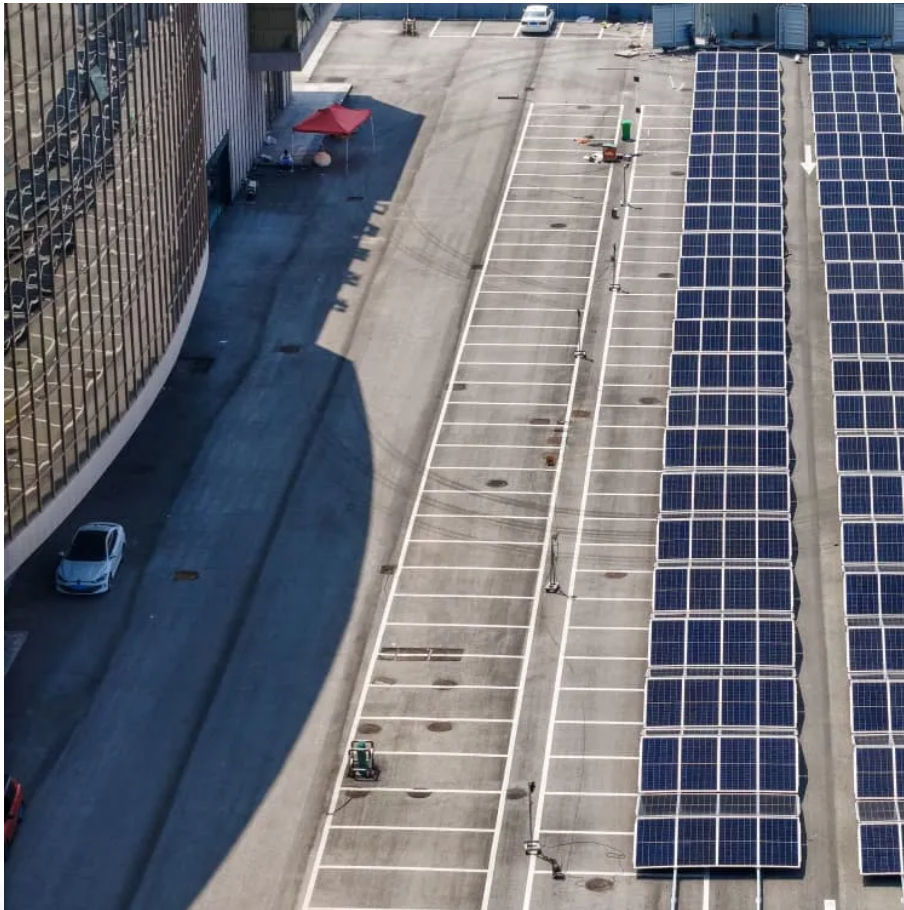


# **Can the outdoor inverter be turned off**





## Overview

---

What happens if the inverter goes out?

The power goes out and your appliances cease to run. You can always turn the inverter back on but that can take time. And most appliances do not like being turned on and off. By leaving the inverter on, the system can automatically switch to it when shore power ceases.

Should I Turn Off my inverter if I have another power source?

Anytime you have another power source available – direct AC, generator, shore power etc. – you have the option to turn off the inverter. The benefit of leaving it on however, is the system automatically switches to it when the other power source is no longer available. In the end it is your call.

How do I Turn Off the inverter?

First: Switch off the inverter from the front side button, press and hold it until the inverter is switched off. Second: Switch off the power socket, power the inverter from the grid, and then unplug the input power plug of the inverter from your home power socket.

When should you turn off your inverter?

Vacation or Long Absences: If you're going away for an extended period, turning off the inverter can help save energy and prevent any issues. Power Outages or Emergencies: In case of a power outage or other emergencies, you might need to turn off the inverter to protect your system.



## Can the outdoor inverter be turned off

---



### Can the Inverter Be Switched Off When Not in ...

However, it is always recommended to periodically charge the batteries to maintain their health and extend their lifespan. Grid-tied inverters, which are connected to the utility grid, can remain off indefinitely without ...

[Free Quote](#)

### Can inverter be switch off when not in use?

Can the inverter be switched off when not in use? Yes, you can switch off your inverter when the batteries are fully charged and it is not in use. But it is not advisable if you are not leaving home for 1 or 2 months.

[Free Quote](#)



### Can inverter be switch off when not in use?

Can the inverter be switched off when not in use? Yes, you can switch off your inverter when the batteries are fully charged and it is not in use. But it is not advisable if you ...

[Free Quote](#)



### Should I Leave My Inverter On All the Time?

Inverters are required to run AC appliances on solar power. From homes to RVs they are fixtures in PV systems. But is it safe to leave an inverter on all the time? Or should you turn it off every



once in a while? If you turn the ...

[Free Quote](#)



### [How to Switch Off Inverter When Not in Use?](#)

Can Inverter Be Switched Off When Not in use? Does An Inverter Draw Power When Turned Off? Can I Leave My Inverter on All The time? Is Inverter A Consumer Or A Producer of Electricity? Now, you know how to switch off inverter when not in use then you must also be curious about can inverter be switched off when not in use. Well, yes, you can switch off your inverter when your batteries are fully charged and it is not in use. Once the batteries are fully charged the consumption power is less than 1% of their capacity. Hence keeping See more on [energytheory cornwallsolarcompany](#)

## **Can I Leave My Inverter On All The Time?**

If you're new to off-grid power systems that use devices like inverters you've probably got a ton of questions! And that's fair enough because there's a wide range of pitfalls to avoid. Fortunately for you, I have made plenty of ...

[Free Quote](#)

### [Can the Inverter Be Switched Off When Not in Use?](#)

However, it is always recommended to periodically charge the batteries to maintain their health and extend their lifespan Grid-tied inverters, which are connected to the ...



[Free Quote](#)



### [How to Switch Off Inverter When Not in Use?](#)

The most interesting question that comes to mind after learning can inverter be switched off when not in use is does an inverter draw power when turned off? The answer is ...

[Free Quote](#)



### [Can we switch off a 1000W inverter when not in use?](#)

An inverter is a device that converts direct current into alternating current. It is widely used in home, car and outdoor camping scenarios. Among them, the 1000W inverter is ...

[Free Quote](#)



### [Understanding Inverter Power Consumption: Do Inverters ...](#)

Can inverters be turned off to save power? Yes, inverters can typically be turned off to save power when they are not in use. This action effectively stops all energy draw from ...

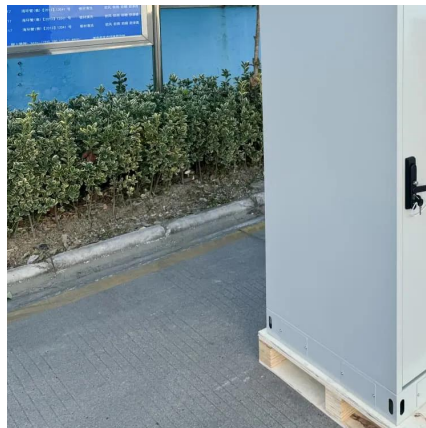
[Free Quote](#)



## Can I Leave My Inverter On All The Time?

If you're new to off-grid power systems that use devices like inverters you've probably got a ton of questions! And that's fair enough because there's a wide range of pitfalls to avoid. Fortunately ...

[Free Quote](#)



## Powering On: The Pros and Cons of Leaving Your Inverter On ...

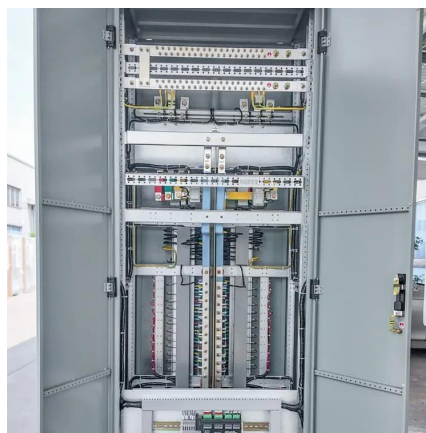
Inverters generate heat during operation, and leaving it on continuously can cause excessive heat buildup. This can lead to reduced efficiency, increased wear and tear, and ...

[Free Quote](#)

## Should I Leave My Inverter On All the Time?

Inverters are required to run AC appliances on solar power. From homes to RVs they are fixtures in PV systems. But is it safe to leave an inverter on all the time? Or should you turn it off every ...

[Free Quote](#)



## How to switch off Inverter when not in use

If you're exploring how to manage your solar power system, you might be wondering about the best way to switch off your solar inverter when it's not in use. Whether ...

[Free Quote](#)



### [How to switch off Inverter when not in use](#)

If you're exploring how to manage your solar power system, you might be wondering about the best way to switch off your solar inverter when it's not in use. Whether you're going on vacation, performing ...

[Free Quote](#)



## Contact Us

---

For catalog requests, pricing, or partnerships, please visit:  
<https://www.getonco.co.za>

### Scan QR Code for More Information



<https://www.getonco.co.za>