

Communication Why set up a base station





Overview

Why is a base station important in wireless communication?

A base station is fundamental in wireless communication, because it facilitates the connection between your device and the wider network. Without base stations, mobile data and voice services would be impossible, as there would be no infrastructure to handle the transmission of signals.

Why are base stations important?

Base stations are the backbone of wireless communication networks, playing a pivotal role in signal transmission, network reliability, and high-speed data connectivity. As technology evolves, the importance of base stations will continue to grow, addressing new challenges and supporting the ever-expanding demand for wireless communication services.

What is a base station and how does it work?

A base station is a fixed point of communication between mobile devices and the wider telecom network. It transmits and receives radio signals, enabling your phone to access voice, data, and internet services. Together, thousands of base stations form a seamless web of coverage known as a cellular network. How Does It Work?

.

What is a base station in a mobile network?

Often hidden in plain sight on rooftops or towers, base stations are the backbone of modern mobile networks. What Is a Base Station?

A base station is a fixed point of communication between mobile devices and the wider telecom network. It transmits and receives radio signals, enabling your phone to access voice, data, and internet services.



Communication Why set up a base station



[What Is the Role of a Base Station in Wireless Communication?](#)

Base stations are the backbone of wireless communication networks, playing a pivotal role in signal transmission, network reliability, and high-speed data connectivity. As ...

[Free Quote](#)

[What is a Base Station? -- From Communication Core to ...](#)

The base station is an indispensable piece of infrastructure in the mobile communication network, silently supporting every phone call, message, and network ...

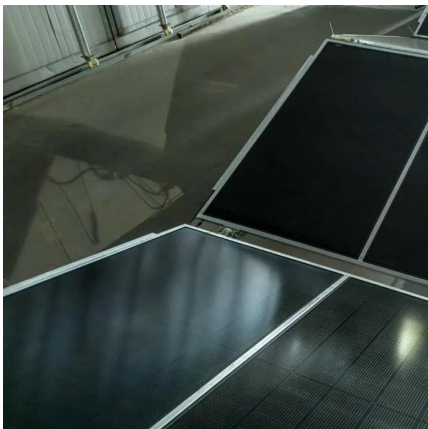
[Free Quote](#)



[What Is a Base Station? Definition and How It Works](#)

A base station is a fixed transceiver that serves as the central communication point for mobile devices within a defined geographical area, known as a cell. It is sometimes called ...

[Free Quote](#)



[Base Station's Role in Wireless Communication Networks](#)

Why is a base station important in wireless communication? A base station is fundamental in wireless communication, because it facilitates the connection between your device and the ...

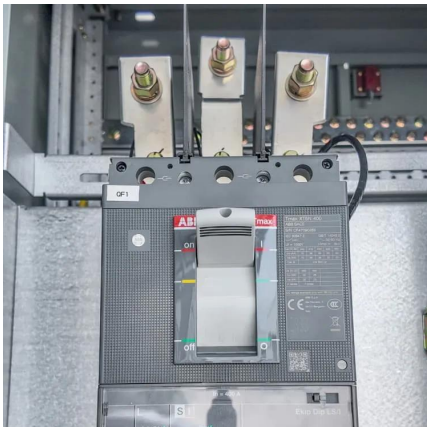
[Free Quote](#)



[Base Stations and Cell Towers: The Pillars of Mobile ...](#)

Base stations and cell towers are critical components of cellular communication systems, serving as the infrastructure that supports seamless mobile connectivity. These ...

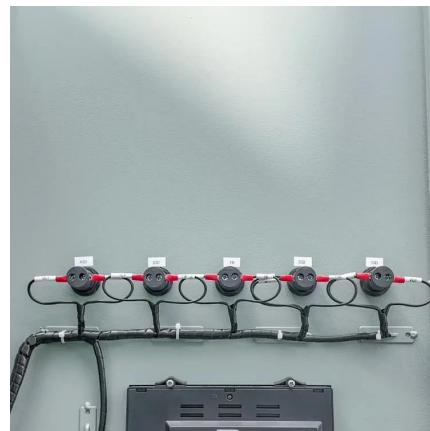
[Free Quote](#)



Understanding Base Stations: The Backbone of Wireless Communication

In today's digital age, reliable and high-speed communication is more essential than ever. Whether it's for mobile phones, internet services, or IoT (Internet of Things) devices, ...

[Free Quote](#)



[What Does a Base Station Do and Why Is It Essential for ...](#)

A base station is a fixed point of communication between mobile devices and the wider telecom network. It transmits and receives radio signals, enabling your phone to access ...

[Free Quote](#)



What Is A Base Station?



A base station is an integral component of wireless communication networks, serving as a central point that manages the transmission and reception of signals between ...

[Free Quote](#)



Base Stations

Construction of Base Station Why are Base Stations so Important? Base stations are important in the cellular communication as it facilitate seamless communication between ...

[Free Quote](#)



Contact Us

For catalog requests, pricing, or partnerships, please visit:
<https://www.getonco.co.za>

Scan QR Code for More Information



<https://www.getonco.co.za>