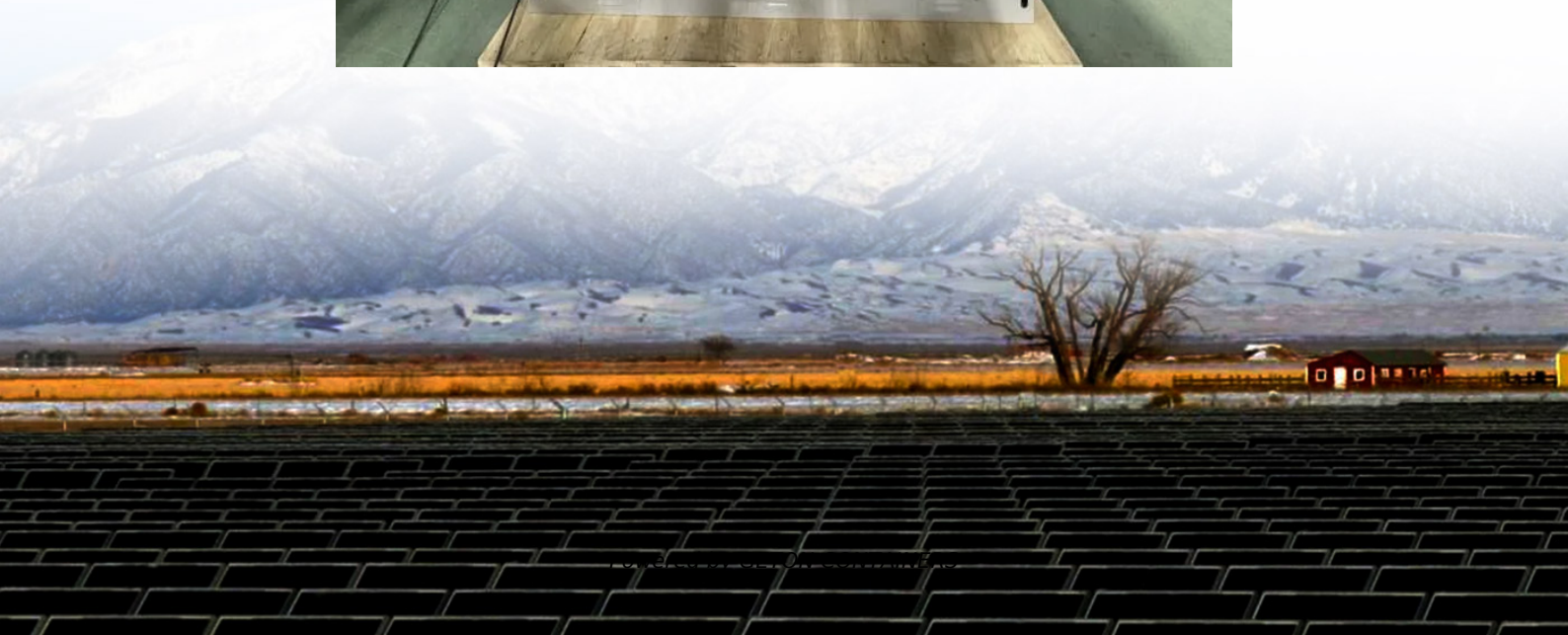


Disadvantages of Ground Outdoor Base Stations





Overview

Do mobile phones need a base station?

Mobile phones and other mobile devices require a network of base stations in order to function. The base station antennas transmit and receive RF (radio frequency) signals, or radio waves, to and from mobile phones near the base station. Without these radio waves, mobile communications would not be possible.

Are residents living near cellular phone base stations at risk?

This study shows that inhabitants living nearby mobile phone base stations are at risk for developing non specific health symptoms, the facing position appears to be the worst one for distances from cellular phone base stations <100 m.

Do base station antennas affect humans?

The effects are radiofrequency sickness, cancer and changes in biochemical parameters. Similar effects from RF by different sources reinforce the conclusions of this review. The objective of this work was to perform a complete review of the existing scientific literature to update the knowledge on the effects of base station antennas on humans.

Why do we need more base station antennas?

As the number of mobile devices in a community grows, more base stations are needed. For that reason, more antennas are needed in such crowded locations as shopping malls where there are many mobile phone users. However, the shorter the distance between base station antennas, the lower the output power of each antenna.



Disadvantages of Ground Outdoor Base Stations



[Base stations and networks](#)

Therefore, the effects on humans living around these anthropogenic electromagnetic field sources (antennas) have not been considered. In France, there is a ...

[Free Quote](#)

[Aerial Base Stations for Global Connectivity: Is ...](#)

Contextually, we focus on one of the most promising solutions to provide sufficient and reliable coverage in far-flung areas: aerial base stations, which consist of unmanned aerial vehicles

[Free Quote](#)



[STUDY ON AN ENERGY-SAVING THERMAL ...](#)

In order to solve the poor heat dissipation in the outdoor mobile communication base station, especially in summer, high temperature alarm phenomenon occurs frequently, ...

[Free Quote](#)



[Harmful Effects of Mobile Towers in ...](#)

Mobile towers, also known as cell towers or base stations, are structures designed to facilitate wireless communication by transmitting and receiving signals to and from mobile devices. These towers play a ...



[Free Quote](#)



[Site Selection Planning of Urban Base Station](#)

With the development of 5G technology, the communication bandwidth is increasing, the coverage of the base station is getting smaller and smaller, and the types and ...

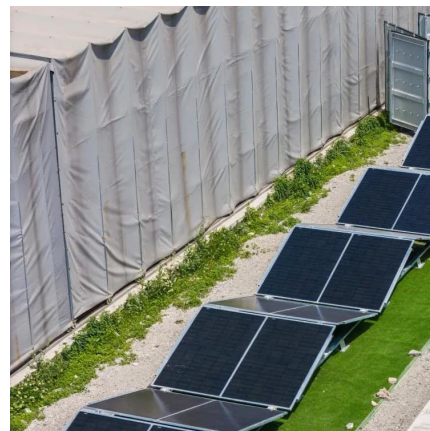
[Free Quote](#)



[Assessing the Benefits of Ground Vehicles as Moving ...](#)

Abstract--In the evolution towards 6G user-centric networking, the moving network (MN) paradigm can play an important role. In a MN, some small cell base stations (BS) are ...

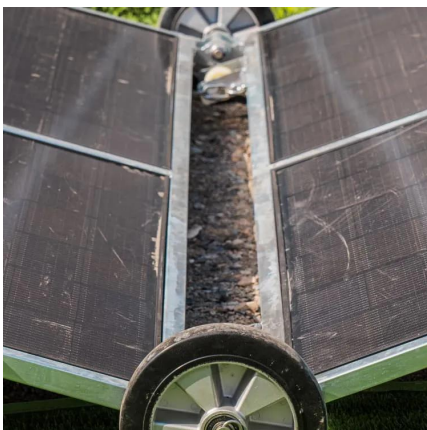
[Free Quote](#)



[Mobile phone and base stations radiation and its effects on ...](#)

The effects of radiation emitted from cell phones and base stations on wildlife, humans and the environment were summarized with suitable examples and studies conducted ...

[Free Quote](#)



[Mobile Phone Base Stations EMF / Health Fact Pack](#)



Base station sites Transmitted power levels from base stations vary considerably depending on the required area or 'cell' that they are providing coverage for. Typically ...

[Free Quote](#)



Embrace the outdoor

Cost savings and efficiency: Embracing outdoor base stations eliminates the need for expensive shelters and air conditioning units, resulting in significant cost savings in infrastructure setup ...

[Free Quote](#)



Aerial Base Stations for Global Connectivity: Is it a Feasible ...

Contextually, we focus on one of the most promising solutions to provide sufficient and reliable coverage in far-flung areas: aerial base stations, which consist of unmanned aerial ...

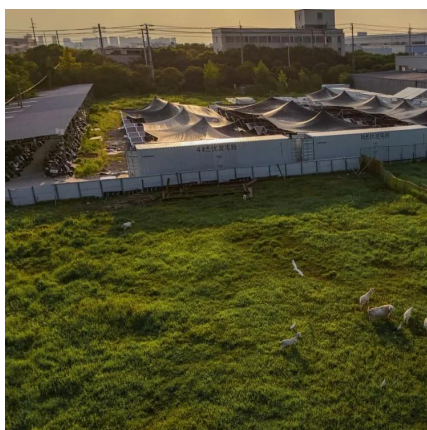
[Free Quote](#)



[Evidence for a health risk by RF on humans living around ...](#)

Therefore, the effects on humans living around these anthropogenic electromagnetic field sources (antennas) have not been considered. In France, there is a ...

[Free Quote](#)



[Harmful Effects of Mobile Towers in Residential Areas](#)



Mobile towers, also known as cell towers or base stations, are structures designed to facilitate wireless communication by transmitting and receiving signals to and from mobile ...

[Free Quote](#)



Contact Us

For catalog requests, pricing, or partnerships, please visit:
<https://www.getonco.co.za>

Scan QR Code for More Information



<https://www.getonco.co.za>