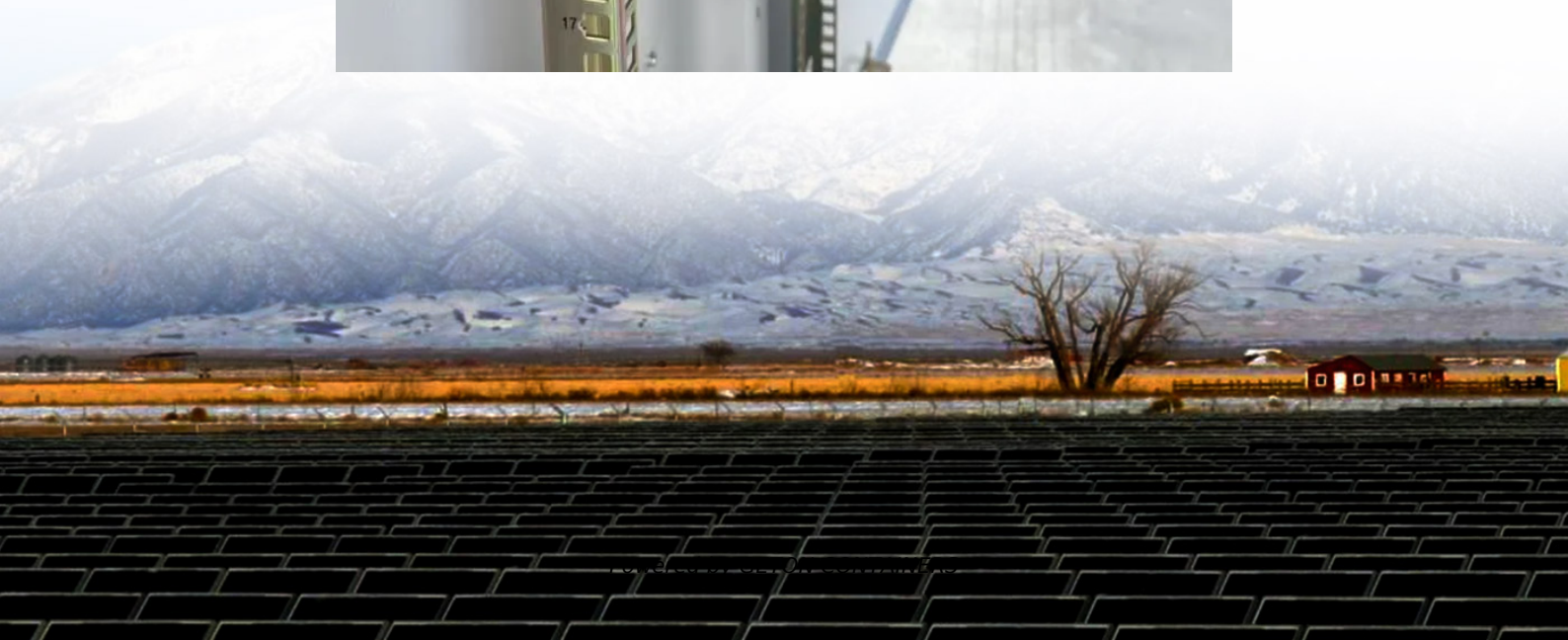


# **Does the 5G base station have a dedicated power supply**





## Overview

---

Will 5G use micro-cells?

Therefore, in 5G networks, high-frequency resources will no longer use macro base stations, micro-cells become the mainstream, and the small base stations will be used as the basic unit for ultra-intensive networking, that is, small base stations dense deployment.

What is the difference between 4G and 5G?

According to the principle of mobile communication, the transmission distance and frequency of the signal are inversely proportional when the power ratio of receiving and transmitting is constant. The frequencies of 4G base stations are generally from 2.3GHz to 2.6GHz, and the frequencies of 5G high-frequency base stations are above 28GHz.

How does a 5G base station reduce OPEX?

This technique reduces opex by putting a base station into a “sleep mode,” with only the essentials remaining powered on. Pulse power leverages 5G base stations’ ability to analyze traffic loads. In 4G, radios are always on, even when traffic levels don’t warrant it, such as transmitting reference signals to detect users in the middle of the night.

Why does 5G cost more than 4G?

This percentage will increase significantly with 5G because a gNodeB uses at least twice as much electricity as a 4G base station. The more operators spend on electricity, the more difficult it is to price their 5G services competitively and profitably.



## Does the 5G base station have a dedicated power supply

---



### [Study on Power Feeding System for 5G Network](#)

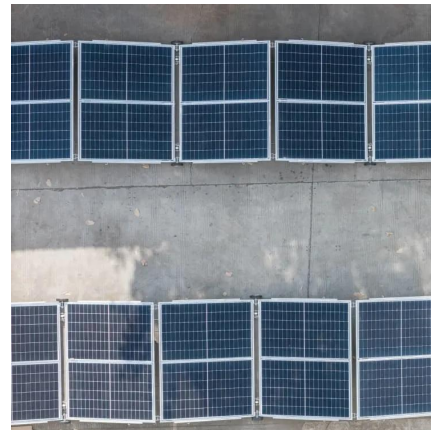
High Voltage Direct Current (HVDC) power supply HVDC systems are mainly used in telecommunication rooms and data centers, not in the Base station. With the increase of ...

[Free Quote](#)

### [Complete Guide to 5G Base Station ...](#)

Explore how 5G base stations are built--from site planning and cabinet installation to power systems and cooling solutions. Learn the essential components, technologies, and challenges behind 5G ...

[Free Quote](#)



### [Complete Guide to 5G Base Station Construction , Key Steps, ...](#)

Explore how 5G base stations are built--from site planning and cabinet installation to power systems and cooling solutions. Learn the essential components, technologies, and ...

[Free Quote](#)

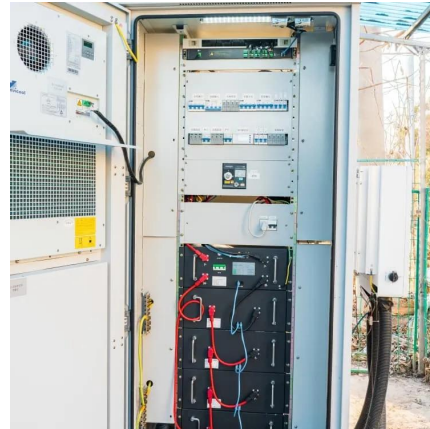


### [Key Technologies and Solutions for 5G Base Station Power Supply](#)

Why Power Management Is the Achilles' Heel of 5G Deployment? As 5G networks proliferate globally, a critical question emerges: How can we sustainably power 5G base stations that ...



[Free Quote](#)



### [The power supply design considerations for ...](#)

An integrated architecture reduces power consumption, which MTN Consulting estimates currently is about 5% to 6 % of opex. This percentage will increase significantly with 5G because a gNodeB uses at ...

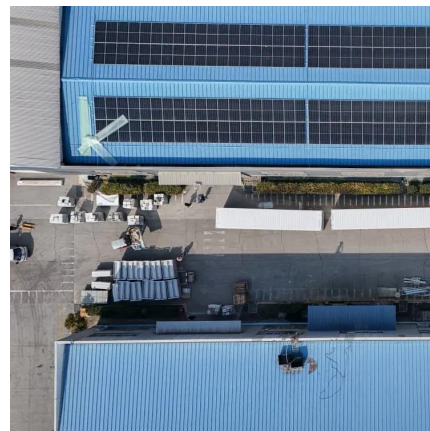
[Free Quote](#)



### [The Road to Robust 5G: A Deep Dive into Base Station Power Supply](#)

In a world swept by 5G networks, we enjoy high-speed, low-latency mobile internet experiences. Behind this transformation are countless quietly operating base stations. One of the core ...

[Free Quote](#)



### [5G macro base station power supply design strategy and ...](#)

For macro base stations, Cheng Wentao of Infineon gave some suggestions on the optimization of primary and secondary power supplies. "In terms of primary power supply, we ...

[Free Quote](#)







### [5G Base Station Power Supply System: NextG Power's ...](#)

Discover NextG Power's 5G micro base station power solutions! Our IP65-rated 2000W/3000W modules and 48V 20Ah/50Ah LFP batteries ensure reliable connectivity.

[Free Quote](#)



### [Selecting the Right Supplies for Powering 5G Base ...](#)

It includes everything needed to power 5G base station components, including software design and simulation tools like LTpowerCAD and LTspice. These tools simplify the ...

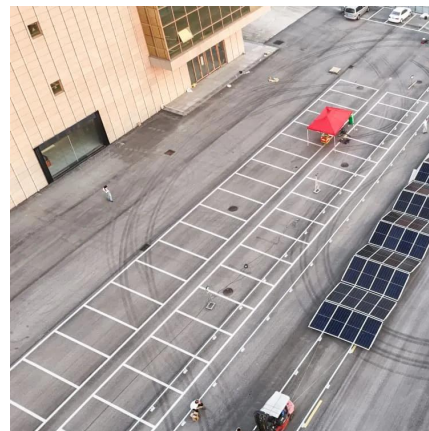
[Free Quote](#)



### [The power supply design considerations for 5G base stations](#)

An integrated architecture reduces power consumption, which MTN Consulting estimates currently is about 5% to 6 % of opex. This percentage will increase significantly with ...

[Free Quote](#)



### [Selecting the Right Supplies for Powering 5G Base Stations](#)

Additionally, these 5G cells will also include more integrated antennas to apply the massive multiple input, multiple output (MIMO) techniques for reliable connections. As a result, a ...

[Free Quote](#)





## Contact Us

---

For catalog requests, pricing, or partnerships, please visit:  
<https://www.getonco.co.za>

### Scan QR Code for More Information



<https://www.getonco.co.za>