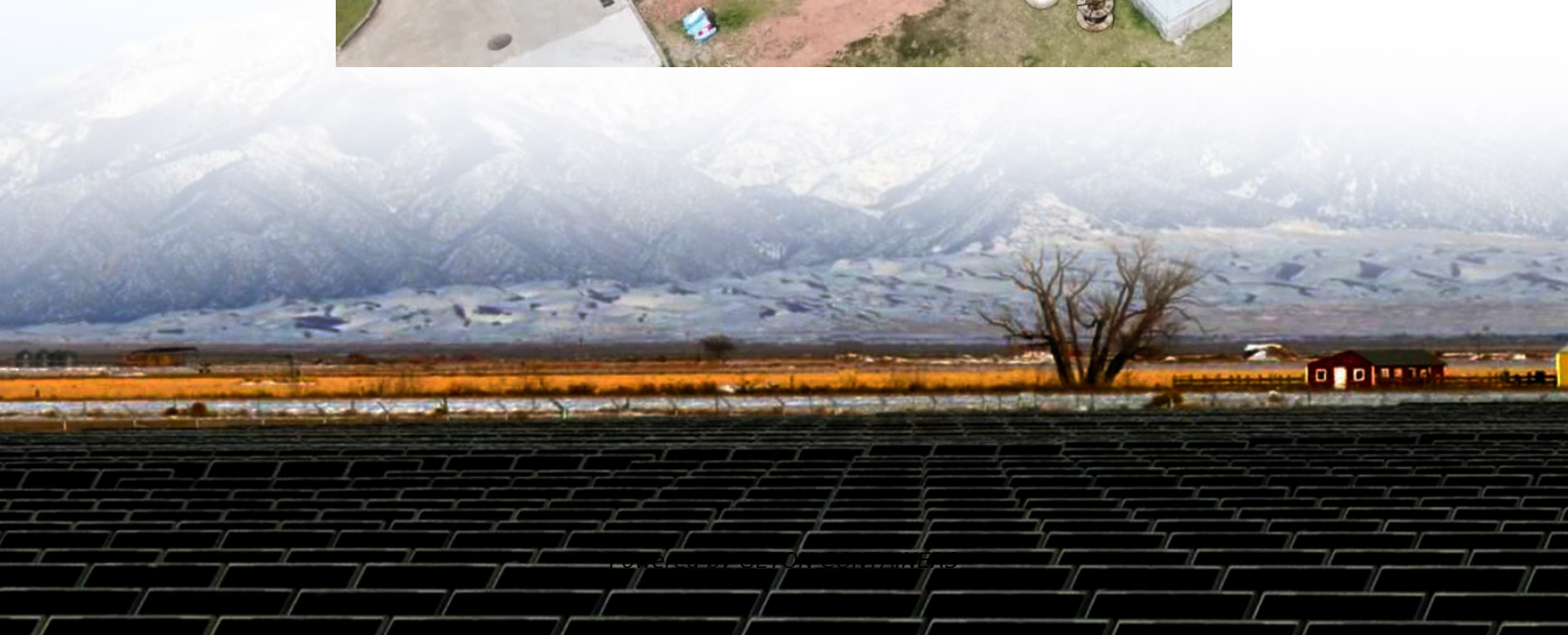


Energy storage container charging loss





Overview

What is a container battery energy storage system?

Understanding its Role in Modern Energy Solutions A Container Battery Energy Storage System (BESS) refers to a modular, scalable energy storage solution that houses batteries, power electronics, and control systems within a standardized shipping container.

How to implement a containerized battery energy storage system?

The first step in implementing a containerized battery energy storage system is selecting a suitable location. Ideal sites should be close to energy consumption points or renewable energy generation sources (like solar farms or wind turbines).

What is containerized battery storage?

Because containerized battery storage units can be mass-produced and are modular in design, they are often more cost-effective than traditional energy storage solutions. The initial capital investment is lower, and the system can be expanded over time without requiring significant upgrades to infrastructure.

Are lithium-ion battery energy storage systems safe?

Lithium-ion battery energy storage system (BESS) has rapidly developed and widely applied due to its high energy density and high flexibility. However, the frequent occurrence of fire and explosion accidents has raised significant concerns about the safety of these systems.



Energy storage container charging loss



[How a Containerized Battery Energy Storage ...](#)

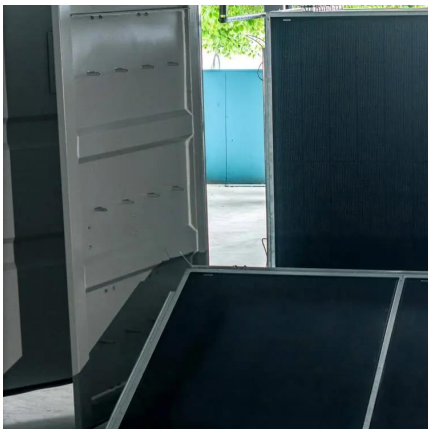
A Container Battery Energy Storage System (BESS) refers to a modular, scalable energy storage solution that houses batteries, power electronics, and control systems within a standardized shipping container. ...

[Free Quote](#)

[How much is the charging loss of the energy storage system?](#)

The exploration of charging loss within energy storage systems reveals intricate dynamics that govern performance and efficiency. Acknowledging the various contributors to ...

[Free Quote](#)



Comprehensive Guide to Maximizing the Safety and Efficiency of Charging

Explore an in-depth guide to safely charging and discharging Battery Energy Storage Systems (BESS). Learn key practices to enhance safety, performance, and longevity ...

[Free Quote](#)

[How a Containerized Battery Energy Storage System Can ...](#)

A Container Battery Energy Storage System (BESS) refers to a modular, scalable energy storage solution that houses batteries, power electronics, and control systems within a ...



[Free Quote](#)



[The Battery Storage Delusion: Utility-Scale Batteries Are No ...](#)

Download Issue Brief The Issue Utility-scale lithium-ion battery energy storage systems (BESS), together with wind and solar power, are increasingly promoted as the ...

[Free Quote](#)



[Comprehensive Guide to Maximizing the ...](#)

Explore an in-depth guide to safely charging and discharging Battery Energy Storage Systems (BESS). Learn key practices to enhance safety, performance, and longevity with expert tips on SOC, temperature, ...

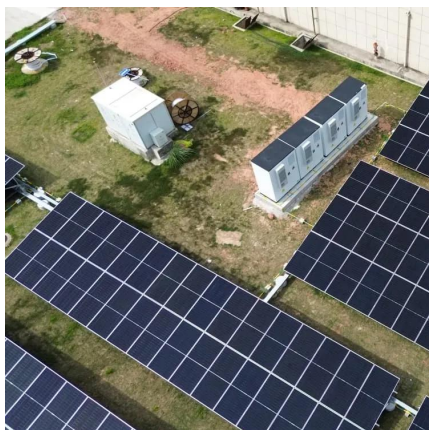
[Free Quote](#)



Optimization of battery energy storage system power scheduling for loss

Modern power grids are increasingly integrating sustainable technologies, such as distributed generation and electric vehicles. This evolution poses significant challenges for ...

[Free Quote](#)

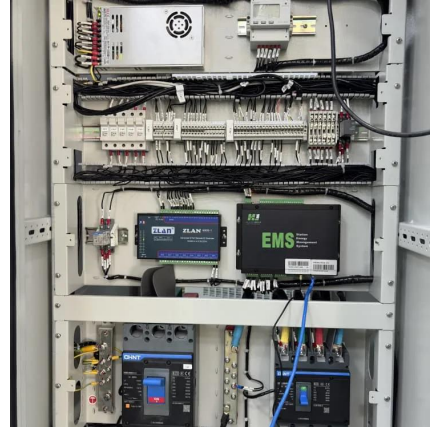




Operational risk analysis of a containerized lithium-ion battery energy

Lithium-ion battery energy storage system (BESS) has rapidly developed and widely applied due to its high energy density and high flexibility. However, the frequent ...

[Free Quote](#)



[Energy storage charging and discharging losses](#)

No battery is 100% efficient. Energy is lost in storage, charging and discharging. Its efficiency is a measure of energy loss in the entire discharge/recharge cycle. eg. For an 80% efficient ...

[Free Quote](#)

[Understanding Charging Loss Standards in Energy Storage ...](#)

Summary: Charging loss is a critical metric in energy storage systems, impacting efficiency and operational costs. This article explores industry standards, influencing factors, and ...

[Free Quote](#)



[Commercial Battery Storage . Electricity . 2024b . ATB . NLR](#)

The battery storage technologies do not calculate levelized cost of energy (LCOE) or levelized cost of storage (LCOS) and so do not use financial assumptions. Therefore, all parameters are ...

[Free Quote](#)



[Energy loss optimization method considering the time ...](#)

A time-varying optimization strategy for battery cluster power allocation is proposed to minimize energy loss in battery energy storage systems (BESS). First, the time ...

[Free Quote](#)



Contact Us

For catalog requests, pricing, or partnerships, please visit:
<https://www.getonco.co.za>

Scan QR Code for More Information



<https://www.getonco.co.za>