

Energy storage station connected to substation





Overview

What are substation batteries?

Substation batteries are large-scale energy storage units installed within electrical substations. Their primary purpose is to supply backup power during outages, support grid regulation, and ensure continuous operation of protective systems.

Why should a battery storage system be installed at the substation level?

Incorporating battery storage systems at the substation level provides numerous benefits, enhancing grid stability and resilience. Proper configuration of electrical substation components ensures reliable performance when connected to high-capacity batteries.

What is battery energy storage system (BESS)?

The impact of the increasing number of renewable energy power plants may cause the power grid to face an effect or change the flow pattern of power systems, for example, the reverse power, power variation, etc. Therefore, the Battery Energy Storage System (BESS) has begun to be introduced widely as a part of solutions.

Why are substation batteries important for grid stability?

One key component that ensures this reliability is the substation battery. These battery backup systems are vital, providing emergency power and stabilizing the grid during outages or faults. In this blog, we will explore the different types of substation batteries, their functions, and why they are indispensable for grid stability.



Energy storage station connected to substation



Design guideline for substations connecting battery energy storage

Renewable energy technologies are being introduced to generate large amounts of electricity for reducing carbon emission. The impact of the increasing number of renewable ...

[Free Quote](#)



[Energy Storage System Integration for Substation Designers](#)

The future is bright for substation design and energy storage integration. As designers harness the power of Business Intelligence and data analytics, they build a more resilient, efficient,

[Grid-Scale Battery Storage Systems](#)

The transition to renewable energy is reshaping the power landscape, with grid-scale battery storage systems playing a pivotal role in this transformation. These systems are crucial for balancing supply and ...

[Free Quote](#)



[How to achieve energy storage power in ...](#)

This reliability not only supports grid operators in maintaining balance but also promotes wider adoption of sustainable energy resources, ultimately contributing to cleaner energy futures. The resilience provided ...

[Free Quote](#)



and ...

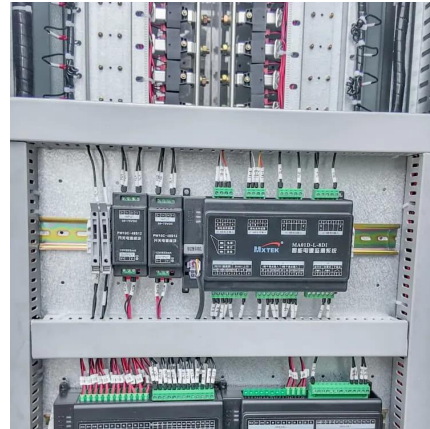
[Free Quote](#)



[Comprehensive energy solution: substation + energy storage station](#)

China Energy Engineering Guangdong Institute is actively exploring the project feasibility and investment return rate of the "substation, energy storage station, and data center station" three ...

[Free Quote](#)



[Power Control Strategy of Energy Storage System in Substation](#)

In conventional substation DC systems, the common approach involves rectifying AC power and integrating battery energy storage technology. However, this traditional battery ...

[Free Quote](#)



[Understanding Substation Batteries: Types, ...](#)

In this blog, we will explore the different types of substation batteries, their functions, and why they are indispensable for grid stability. What Are Substation Batteries? Substation batteries are large-scale ...

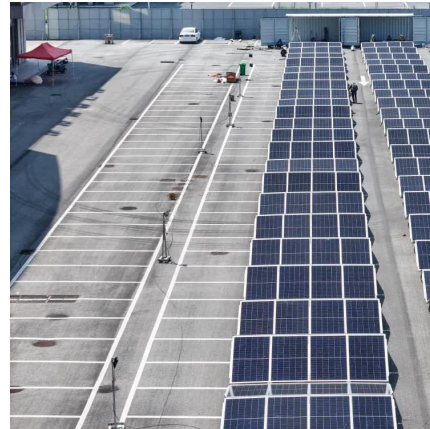
[Free Quote](#)



[Grid-Scale Battery Storage Systems](#)

The transition to renewable energy is reshaping the power landscape, with grid-scale battery storage systems playing a pivotal role in this transformation. These systems are crucial for ...

[Free Quote](#)



[Optimization of battery energy storage system power](#)

In light of these issues, this paper proposes a methodology for optimizing the power scheduling of a battery energy storage system, with the objectives of minimizing active ...

[Free Quote](#)

[How to achieve energy storage power in substation](#)

This reliability not only supports grid operators in maintaining balance but also promotes wider adoption of sustainable energy resources, ultimately contributing to cleaner ...

[Free Quote](#)



[Design guideline for substations connecting ...](#)

Renewable energy technologies are being introduced to generate large amounts of electricity for reducing carbon emission. The impact of the increasing number of renewable energy power plants may ...

[Free Quote](#)



Understanding Substation Batteries: Types, Functions, and ...

In this blog, we will explore the different types of substation batteries, their functions, and why they are indispensable for grid stability. What Are Substation Batteries? ...

[Free Quote](#)



Substation energy storage station

BESS at primary substation Battery energy storage system may be connected to the high voltage busbar(s) or the high voltage feeders with voltage ranges of 132kV-44 kV; for the reliability of ...

[Free Quote](#)

Shanghai Electric Distributed Energy Co Ltd-

Relying on Gansu's million-kilowatt wind power base, a 100MW/400MWh energy storage power station is built near the 330kV substation. A shared model is established on the ...

[Free Quote](#)



Contact Us

For catalog requests, pricing, or partnerships, please visit:
<https://www.getonco.co.za>



Scan QR Code for More Information



<https://www.getonco.co.za>