

Factory price 3 phase breaker in Los-Angeles





Overview

Are Square D circuit breaker panelboards UL certified?

Square D™-brand I-Line™ circuit breaker power distribution panelboards are for use on AC or DC systems. The panels, labeled cULus (compliance to UL and CSA standards certified by UL) are also Underwriters Laboratories® (UL®) Listed. I-Line circuit breaker panelboards are available as 400–1200A main lugs only and 100–1200A main circuit breakers.

What is an I-line circuit breaker?

I-Line circuit breakers, with their exclusive bus connection design, provide superior reliability and performance advantages. A wide variety of accessories are available for field or factory installation of I-Line panelboards. This I-Line, 3P, circuit breaker has a 300A rated current.

What lugs are available for I-line circuit breaker panelboards?

I-Line circuit breaker panelboards are available as 400–1200A main lugs only and 100–1200A main circuit breakers. I-Line circuit breakers, with their exclusive bus connection design, provide superior reliability and performance advantages. A wide variety of accessories are available for field or factory installation of I-Line panelboards.

What type of circuit breaker does Schneider Electric use?

Schneider Electric USA. LA36300 - Circuit breaker, LA, 300A, 3 pole, 600VAC, 22kA, 250VDC, I-Line mount, thermal magnetic.



Factory price 3 phase breaker in Los-Angeles



LA36300

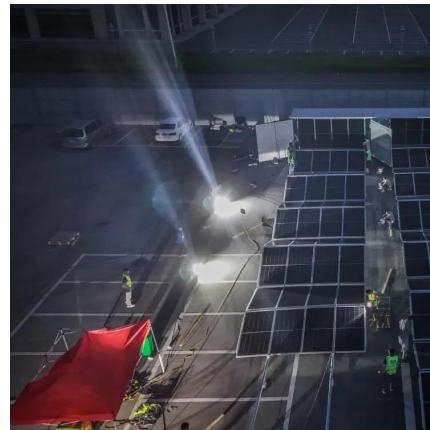
I-Line circuit breaker panelboards are available as 400-1200A main lugs only and 100-1200A main circuit breakers. I-Line circuit breakers, with their exclusive bus connection design, provide superior reliability and ...

[Free Quote](#)

[Circuit Breakers and Panelboards in Los Angeles](#)

We carry most amperages and voltages. Some examples of what we carry: 20 Amp thru 125 amp Zinsco breakers 20 amp through 1200 amp 480 volt Siemens breakers 3 phase ...

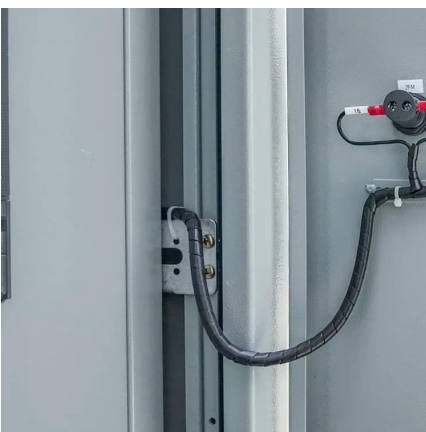
[Free Quote](#)



[Circuit Breaker Supply Los Angeles](#)

At Circuit Breaker Buyers Los Angeles, we pride ourselves on offering the best prices for circuit breakers, disconnects, panel boards, and switch gear in the Los Angeles market. We are committed to providing our customers ...

[Free Quote](#)



[3 Phase Circuit Breaker Price](#)

Find reliable 3 phase circuit breaker prices from top suppliers. Shop our range of high-quality, durable, and efficient electrical products for your needs.

[Free Quote](#)



[Top Wholesale Phase 3 Circuit Breaker Supplier, Factory, and ...](#)

As a reliable wholesale supplier, factory, and manufacturer of electrical components, we ensure that our products meet industry standards for safety and performance. ...

[Free Quote](#)



[Circuit Breakers Suppliers in Los Angeles, California](#)

Locate Circuit Breakers suppliers, manufacturers & distributors in Los Angeles, California. Interactive map of Los Angeles, California provided.

[Free Quote](#)



[J & S Circuit Breakers Inc., Los Angeles, CA](#)

For All Your Circuit Breakers & Electrical Supply Needs Trust the Experts Since 1982, we have been selling all types of new, reconditioned inventory to residential, commercial, and trade clients. Our technicians have over 42 ...

[Free Quote](#)



CBS Los Angeles



The Circuit Breaker Sales Los Angeles service shop offers a large inventory of new, used, and remanufactured electrical equipment from a wide range of manufacturers. Our shop, ...

[Free Quote](#)



[Circuit Breaker Buyers Los Angeles](#)

At Circuit Breaker Buyers Los Angeles, we work diligently to ensure a smooth and hassle-free experience for our customers who sell circuit breakers. Los Angeles Circuit Breaker Buyers ...

[Free Quote](#)



[Circuit Breaker Supply Los Angeles](#)

At Circuit Breaker Buyers Los Angeles, we pride ourselves on offering the best prices for circuit breakers, disconnects, panel boards, and switch gear in the Los Angeles market. We are ...

[Free Quote](#)



Three Phase Breakers , Top-Quality Circuit Breakers, Bottom-Dollar Prices

The Trusted Source for Affordable, Reliable Circuit Breakers You rely on quality electrical components that deliver performance, safety, and durability--without stretching your budget. ...

[Free Quote](#)

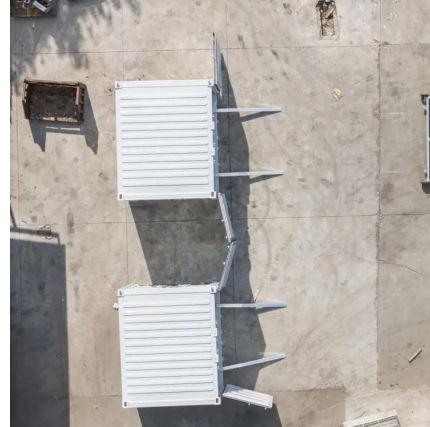


[Circuit Breakers and Panelboards in Los Angeles](#)



We carry most amperages and voltages. Some examples of what we carry: 20 Amp thru 125 amp Zinsco breakers 20 amp through 1200 amp 480 volt Siemens breakers 3 phase and single phase 15 thru 100 ...

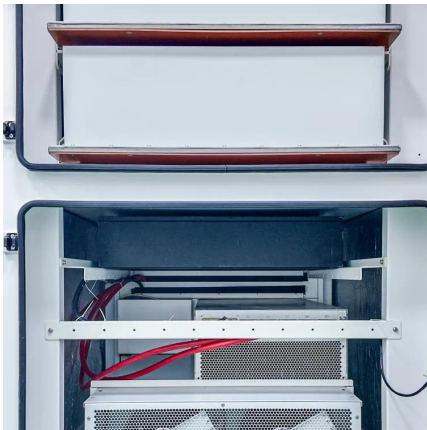
[Free Quote](#)



[J & S Circuit Breakers Inc., Los Angeles, CA](#)

For All Your Circuit Breakers & Electrical Supply Needs Trust the Experts Since 1982, we have been selling all types of new, reconditioned inventory to residential, commercial, and trade ...

[Free Quote](#)



LA36300

I-Line circuit breaker panelboards are available as 400-1200A main lugs only and 100-1200A main circuit breakers. I-Line circuit breakers, with their exclusive bus connection design, ...

[Free Quote](#)



Contact Us

For catalog requests, pricing, or partnerships, please visit:
<https://www.getonco.co.za>



Scan QR Code for More Information



<https://www.getonco.co.za>