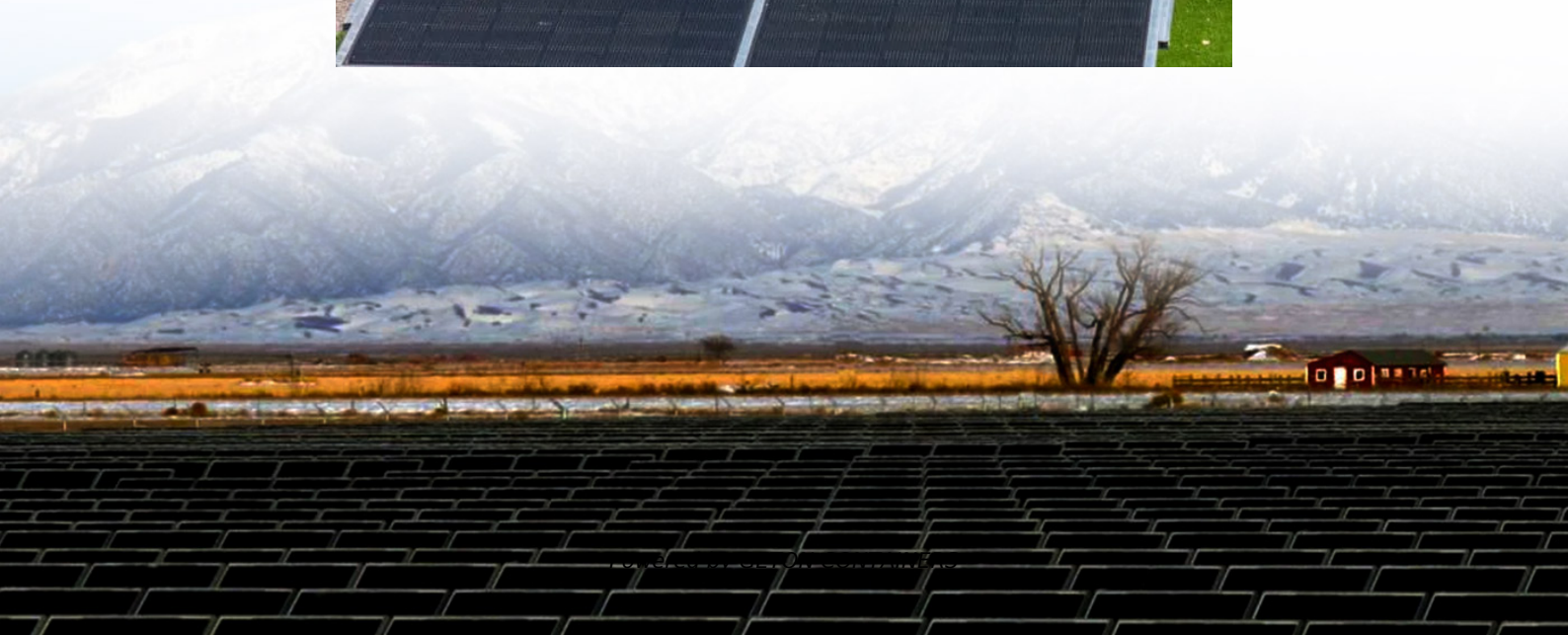


Grid-connected inverter after power outage





Overview

How do grid-tied inverters work during a power outage?

During a power outage, grid-tied inverters can continue to operate using power from the solar panels. This is made possible through innovative inverter technology that allows the system to function independently of the grid. By leveraging this advancement, you can liberate yourself from the constraints of grid dynamics during outages.

Why do inverters need to be disconnected from the grid?

When the grid power is off, the inverter must disconnect from the grid to guarantee safety and prevent backfeeding electricity, which could harm utility workers. The inverter design plays an essential role in enabling this grid disconnection feature, guaranteeing seamless operation during power outages.

How does a grid-tied inverter work?

During a grid power outage, a grid-tied inverter seamlessly switches to utilize stored energy or renewable sources like solar panels and wind turbines, securing uninterrupted power supply. It operates independently of the grid, enhancing energy autonomy and preventing backfeeding electricity during emergencies.

Does a solar inverter work during a power outage?

To ensure your solar inverter functions during a power outage, consider installing a hybrid solar inverter that is designed to work with battery storage. This type of inverter automatically switches to battery power when the grid goes down, allowing you to keep essential appliances running.



Grid-connected inverter after power outage



[How does a hybrid inverter handle power ...](#)

How Hybrid Inverters Handle Power Outages
Hybrid inverters are designed to handle power outages effectively by providing continuous power supply when the grid fails. Here is a breakdown of how they ...

[Free Quote](#)

[During a power outage, do the microinverters stop ...](#)

I know my enlighten Solar System doesn't push power back into the grid during a power outage. I'm trying to figure out if that happens at the micro inverter level or does that happen in the Box..

[Free Quote](#)



[Can Your Solar Power Inverter Work in a Power Outage?](#)

Battery-Backed Systems: If your solar power inverter is connected to a battery storage system, it can draw energy from these batteries during a power outage. This arrangement ensures that ...

[Free Quote](#)

[How does a hybrid inverter handle power outages , NenPower](#)

How Hybrid Inverters Handle Power Outages
Hybrid inverters are designed to handle power outages effectively by providing continuous power supply when the grid fails. ...



[Free Quote](#)



[7 Reasons Grid-Tied PV Trips Off During Outages--and ...](#)

During an outage, those devices ensure safe conditions for responders and maintenance. If the rapid-shutdown circuit triggers, module power electronics and the inverter ...

[Free Quote](#)



[3 ways to use grid-tied solar during power ...](#)

How much is grid-connected solar power reliable during a power outage? Grid-connected solar power plants are not as reliable as off-grid solar power plants. but with ZED advance Grid-connected PV plants ...

[Free Quote](#)



[On Grid Solar Inverters: Why They Don't Work During Power ...](#)

They enable an on-grid solar system to operate independently of the grid when necessary, providing power from the solar panels or the battery during an outage. Adding a ...

[Free Quote](#)





What Happens to a Grid-Tied Inverter When ...

During a grid power outage, a grid-tied inverter seamlessly switches to utilize stored energy or renewable sources like solar panels and wind turbines, securing uninterrupted power supply. It operates ...

[Free Quote](#)



What Happens to a Grid-Tied Inverter When Grid Power Is Off?

During a grid power outage, a grid-tied inverter seamlessly switches to utilize stored energy or renewable sources like solar panels and wind turbines, securing ...

[Free Quote](#)



When The Utility Grid Is Down What Will An ...

Grid Outage Considerations: Understand the inverter's capabilities during grid outages. Some inverters have anti-islanding features that prevent them from generating power during a grid outage for safety ...

[Free Quote](#)



3 ways to use grid-tied solar during power outage [without ...

How much is grid-connected solar power reliable during a power outage? Grid-connected solar power plants are not as reliable as off-grid solar power plants. but with ZED ...

[Free Quote](#)





Grid-Forming Inverters in a Microgrid: Maintaining Power ...

This article presents an autonomous control architecture for grid-interactive inverters, focusing on the inverters providing power in a microgrid during utility outages. In ...

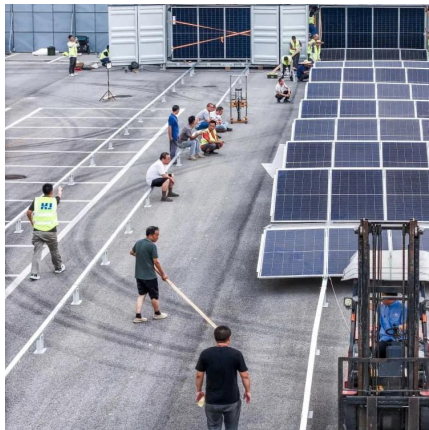
[Free Quote](#)



Can Your Solar Power Inverter Work in a ...

Battery-Backed Systems: If your solar power inverter is connected to a battery storage system, it can draw energy from these batteries during a power outage. This arrangement ensures that critical appliances, such as ...

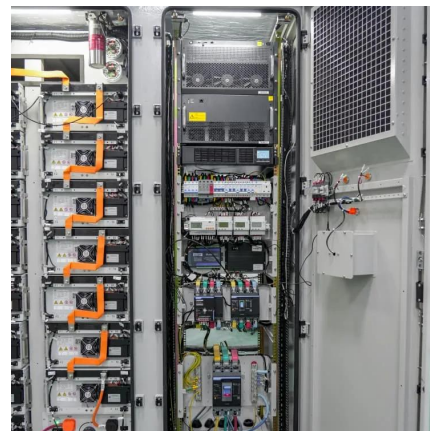
[Free Quote](#)



Power Outages

What should I do in case of a power outage? Your SolarEdge inverter is connected to the utility grid. When a power outage occurs, the system will automatically shut down for safety reasons. ...

[Free Quote](#)



When The Utility Grid Is Down What Will An Interactive Inverter ...

Grid Outage Considerations: Understand the inverter's capabilities during grid outages. Some inverters have anti-islanding features that prevent them from generating power ...

[Free Quote](#)





Contact Us

For catalog requests, pricing, or partnerships, please visit:
<https://www.getonco.co.za>

Scan QR Code for More Information



<https://www.getonco.co.za>