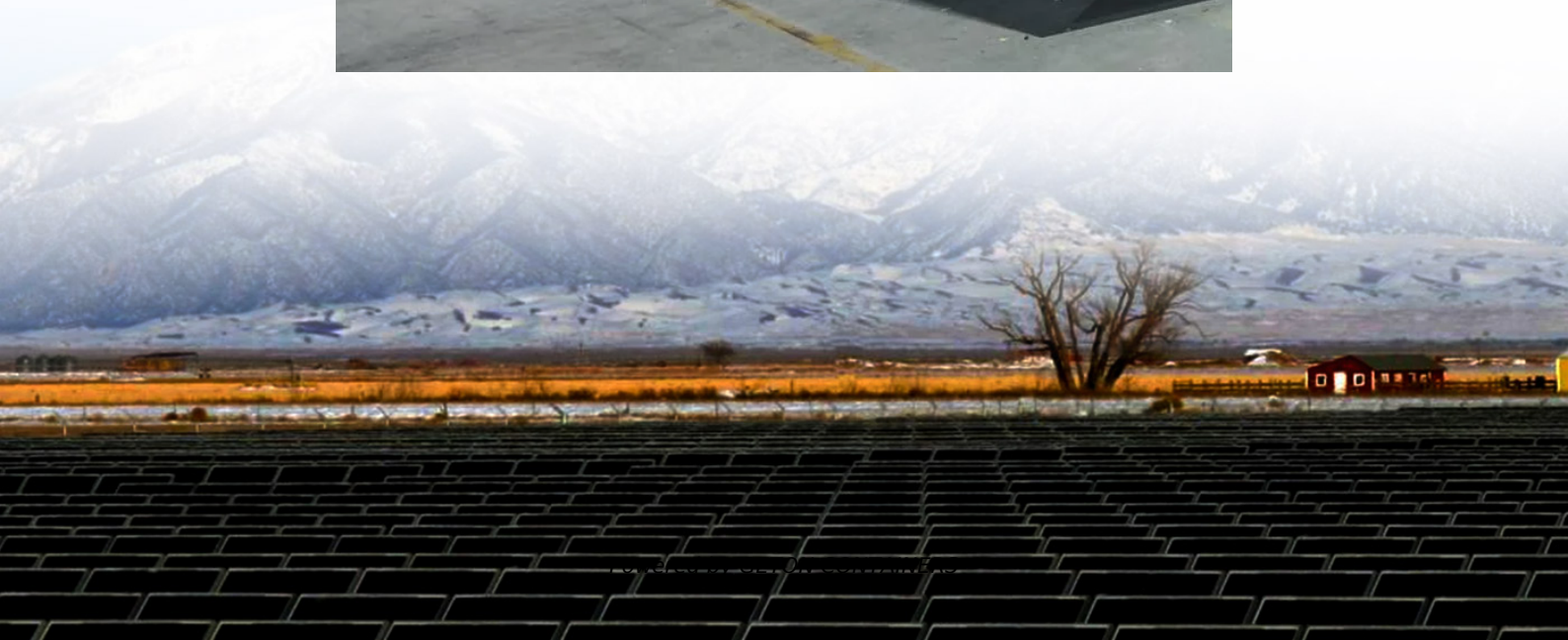


# How big is the short-circuit current of the battery cabinet





## Overview

---

How many amps should a short circuit current be?

Short circuit current should be limited by BMS to something around a few hundred amps. There is a small amount of time for BMS to react and shut down so for about 100-300 microseconds it can be couple thousand amps. Just curious, why are you looking for this?

Are you doing this to calculate AIC for fusing?

.

How many Mohm does a battery take?

You're all assuming batteries to behave in an "ideal" way and they don't. The chemical processes inside the battery have their limitations. Of course you take 0,45 mOhm! You have to secure the battery by limit the current, you'll take max internal resistance which is 0,45 mOhm.

How do you measure battery impedance?

You can measure that with a 1 kHz battery impedance meter like a YR1035+. Each 100 AH LFP is typically spec'd at less than 0.5 milliohms for R<sub>ohmic</sub>. There is four in series in 12v LFP plus about another 0.5-0.8 milliohms for BMS and wiring. A 280 AH cell is typically spec'd at 0.25 milliohms R<sub>ohmic</sub>.



## How big is the short-circuit current of the battery cabinet

---



### How big is the parallel short-circuit current of lithium iron ...

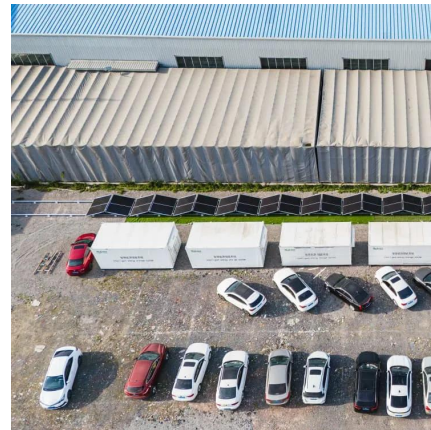
Discover the details of How big is the parallel short-circuit current of lithium iron phosphate batteries at Dongguan Everwin Tech Co., Limited, a leading supplier in China for ...

[Free Quote](#)

### [Power System Analysis: Short-Circuit Load Flow and Harmonics](#)

Calculate and plot the short-circuit current profile for a battery system with details as follows: lead acid battery, 240 V, 120 cells, 400 Ah rating at a 8 -hr rate of 1.75 V per cell at 25 ° C. Each ...

[Free Quote](#)



### What are the Values for the Internal Resistance and Short Circuit Current?

Internal Resistance and Short Circuit Current values Battery Model  
Internal Resistance (?)  
Short Circuit Current (A) 2 KS 33P 0.00023 9113 2 OS 33P 0.00022 9701 2 YS ...

[Free Quote](#)



### [Battery Internal Resistance & Short Circuit Current.](#)

Battery internal resistance and short circuit current values are available from battery manufacturers. The method used to arrive at the published values varies but when a ...



[Free Quote](#)



### [Calculating the LiFePO4 battery short circuit current](#)

I'm trying to understand how to calculate a LiFePO4 battery short circuit current. I have a 12V 100Ah LiFePO4 battery and the manual states an internal Impedance of 40m?. So ...

[Free Quote](#)



### [How much current does a battery short circuit](#)

What is a battery short circuit? A battery short circuit occurs when there is a low-resistance or no-resistance path between the battery's positive and negative terminals, leading to excessive ...

[Free Quote](#)



### [Battery Internal Resistance & Short Circuit ...](#)

Battery internal resistance and short circuit current values are available from battery manufacturers. The method used to arrive at the published values varies but when a method recognised by International ...

[Free Quote](#)



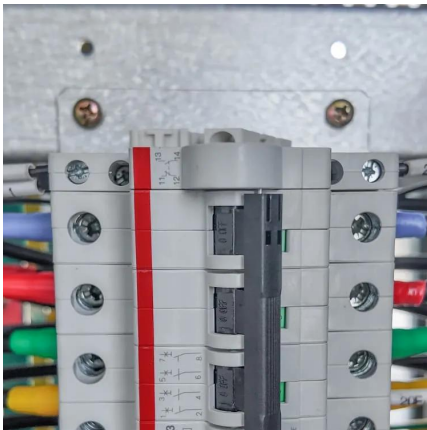
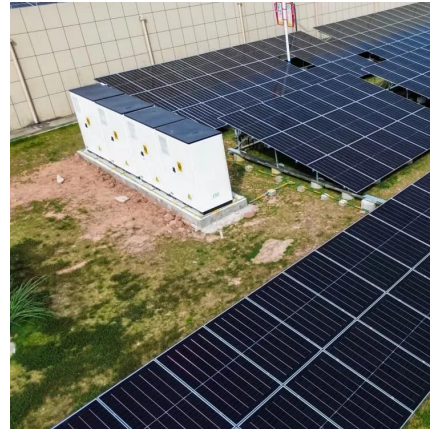




### [Maximum short-circuit current of the battery cabinet](#)

How accurate are battery short circuit values? Estimated short circuit values can vary widely depending upon the test method and measurement technique. Multi-stepped discharge ...

[Free Quote](#)



### **Calculation of Short-Circuit Current in NCM Lithium-ion Batteries**

NCM lithium-ion batteries are high-performance batteries that offer high energy density, long cycle life, and good safety performance, making them widely used in electric ...

[Free Quote](#)

## **Contact Us**

---

For catalog requests, pricing, or partnerships, please visit:  
<https://www.getonco.co.za>

**Scan QR Code for More Information**



<https://www.getonco.co.za>