

# How big of an inverter can a 12v200a be connected to





## Overview

---

What size inverter for a 12V 200Ah battery?

For a 12V 200Ah battery (2.4kWh), a 2000W inverter is ideal. Formula: Inverter Wattage  $\leq$  (Battery Voltage  $\times$  Ah Rating  $\times$  0.8). Factor in surge power needs but prioritize sustained loads. Always check the battery's max discharge rate (C-rate) to avoid exceeding safe limits. When sizing for 24V or 48V systems, recalculate using the higher voltage.

How do I choose the right inverter size for my 200Ah lithium battery?

When it comes to choosing the right inverter size for your 200Ah lithium battery, there are a few factors you'll need to consider. The first is the power needs of the devices you plan on running off the inverter. Take into account their wattage requirements and how many devices will be connected at once.

What wattage Inverter should I use?

Match the inverter's continuous wattage rating to the battery's discharge capacity. For a 12V 200Ah battery (2.4kWh), a 2000W inverter is ideal. Formula: Inverter Wattage  $\leq$  (Battery Voltage  $\times$  Ah Rating  $\times$  0.8). Factor in surge power needs but prioritize sustained loads.

How much battery does a 12 volt inverter need?

As a rule of thumb, the minimum required battery capacity for a 12-volt system is around 20 % of the inverter capacity. For 24-volt inverters, it is 10 %. The battery capacity for a 12-volt Mass Sine 12/1200, for instance, is 240 Ah, while a 24-volt Mass Sine 24/1500 inverter would require at least 150 Ah.



## How big of an inverter can a 12v200a be connected to

---



### [What Size Inverter Can I Run Off a 200Ah ...](#)

You can run an inverter rated between 1500W and 2400W off a 200Ah lithium battery depending on voltage and usage. Typically, a 12V 200Ah battery supports up to about 2400W, while higher voltage ...

### [Free Quote](#)

### [How Big of an Inverter Can My Car Battery ...](#)

Calculating inverter demand sizing There is a theoretical limit to the amount of inverter power that can be supported by an automotive battery. Theoretically, the maximum supported inverter power can be ...

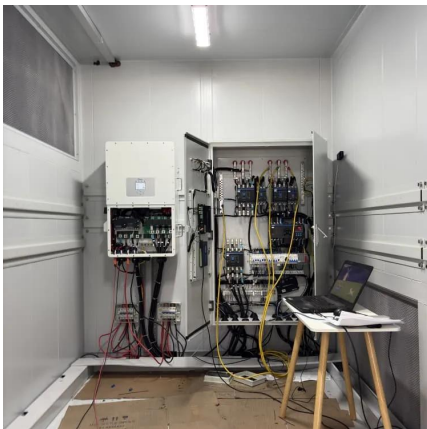
### [Free Quote](#)



### [What Size Inverter Can I Run Off a 200Ah Lithium Battery?](#)

You can run an inverter rated between 1500W and 2400W off a 200Ah lithium battery depending on voltage and usage. Typically, a 12V 200Ah battery supports up to about ...

### [Free Quote](#)



### [Frequently Asked Questions about Inverters](#)

Frequently Asked Questions about Inverters How much battery capacity do I need with an inverter? As a rule of thumb, the minimum required battery capacity for a 12-volt system is ...





[Free Quote](#)



### **Inverter Sizing: Can Your Inverter Be Too Big for Your Battery ...**

An inverter can indeed be too big for your battery bank. An oversized inverter might waste energy and raise operating costs. To prevent this, ensure the inverter size matches your ...

[Free Quote](#)



### [What Size of Inverter Is Good for a 200Ah Battery?](#)

The best inverter size for a 200Ah battery depends on the system voltage and your power needs. A 12V 200Ah battery typically pairs well with a 1000W-2000W inverter, while a 24V setup can ...

[Free Quote](#)



### [Choosing the Best Inverter Size for a 200Ah...](#)

Using an inverter that is too large or too small for your 200Ah lithium battery can lead to inefficiency, overheating, system shutdowns, or battery damage. Ensuring that your inverter's wattage rating matches the ...

[Free Quote](#)

### [How Many Batteries can Be Connected To An Inverter?](#)



An inverter is only as good as the power source. Discover how many batteries you can connect to an inverter and get the most out of it.

[Free Quote](#)



[Choosing the Best Inverter Size for a 200Ah Lithium Battery](#)

Using an inverter that is too large or too small for your 200Ah lithium battery can lead to inefficiency, overheating, system shutdowns, or battery damage. Ensuring that your ...

[Free Quote](#)



[What Size Inverter Do I Need for a 200Ah...](#)

How do you determine the right size inverter for a 200Ah lithium battery? The ideal inverter size depends on your power needs and the battery's voltage and capacity. For a 12V 200Ah lithium battery, a 1500W ...

[Free Quote](#)



[What Size Inverter Do I Need for a 200AH Battery?](#)

To determine the appropriate inverter size for a 200AH battery, you need to consider the total wattage of the devices you plan to power. A general rule is to choose an ...

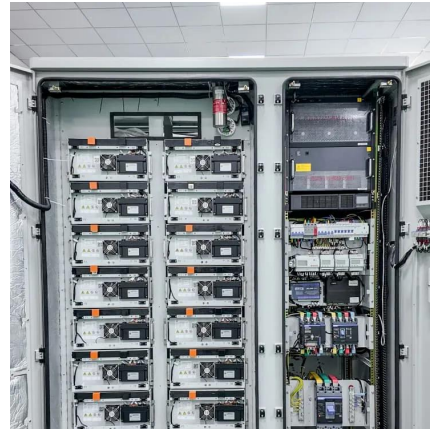
[Free Quote](#)

[How Big of an Inverter Can My Car Battery Handle?](#)



Calculating inverter demand sizing There is a theoretical limit to the amount of inverter power that can be supported by an automotive battery. Theoretically, the maximum ...

[Free Quote](#)



[Can an Inverter Be Too Big for Your Battery System?](#)

How to Calculate the Right Inverter Size for Your Battery Match the inverter's continuous wattage rating to the battery's discharge capacity. For a 12V 200Ah battery (2.4kWh), a 2000W inverter ...

[Free Quote](#)



[What Size Inverter Do I Need for a 200Ah Lithium Battery](#)

How do you determine the right size inverter for a 200Ah lithium battery? The ideal inverter size depends on your power needs and the battery's voltage and capacity. For a 12V ...

[Free Quote](#)



## Contact Us

---

For catalog requests, pricing, or partnerships, please visit:  
<https://www.getonco.co.za>



## Scan QR Code for More Information



<https://www.getonco.co.za>