

How many V does a solar inverter use in 24 hours





How many V does a solar inverter use in 24 hours



[Does a solar inverter use a lot of electricity](#)

In addition, solar inverters continue to use a small amount of power in standby mode when the system is not actively generating electricity, such as on cloudy days or at ...

[Free Quote](#)

[Pure Sine Wave 5/6/8/10kw Hybrid Solar Inverter Solar ...](#)

After-sales Service: 24 Hours*7days Technical Support Warranty: 5years Nature of Source Flow: Active Inverter Phase: Three Output Power: 5kw/10kw Certification: SAA, CE, ...

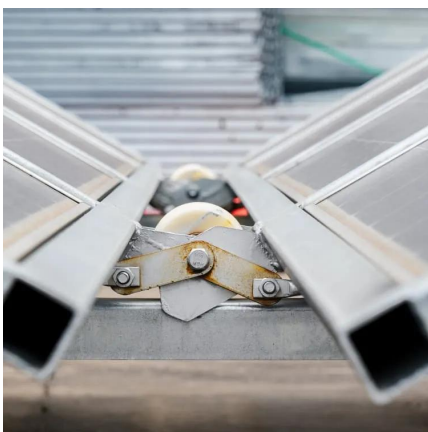
[Free Quote](#)



[How many V does a photovoltaic inverter use in 24 hours](#)

Solar panels harvest photons from sunlight using the photovoltaic effect and produce direct current (DC) electricity. However, your home operates using alternating current (AC or ...

[Free Quote](#)



[Solar Panel Voltage Explained: Output & Regulation Guide](#)

Solar panels convert sunlight into usable electrical energy -- but to truly understand how that energy flows, you need to grasp one fundamental concept: voltage. Voltage ...

[Free Quote](#)



24V Solar Inverter

The Role of a 24V Solar Inverter A 24V solar inverter specifically works with a 24-volt solar power system. This kind of system is common for smaller solar setups, such as ...

[Free Quote](#)



[How To Calculate Solar Panel Battery And Inverter](#)



[Can Solar Inverter Run 24 Hours?](#)

In summary, a solar inverter can run 24 hours a day, continuously converting the direct current to alternating current as long as it has a consistent power supply and proper maintenance.

[Free Quote](#)



[How many V does the solar inverter have?](#)

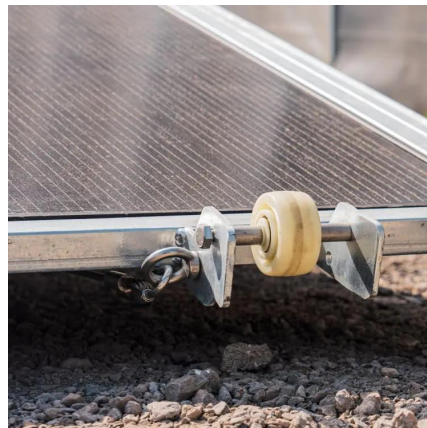
1. The number of Volts (V) in a solar inverter varies widely depending on the specific model and application, generally ranging from 12V to 1500V, with most residential models operating around 300V to 600V. ...

[Free Quote](#)



Learn how to calculate solar panel battery and inverter size for a household solar system, using Techfine's products for optimal performance and efficiency.

[Free Quote](#)



[Can Solar Inverter Run 24 Hours?](#)

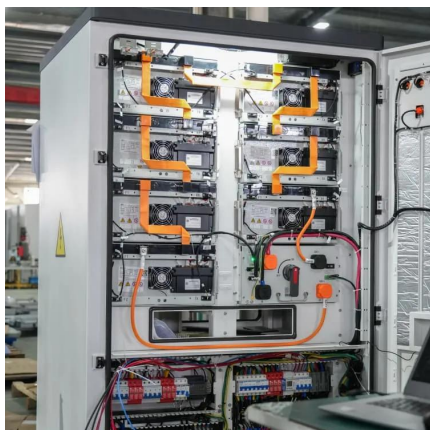
In summary, a solar inverter can run 24 hours a day, continuously converting the direct current to alternating current as long as it has a consistent power supply and proper ...

[Free Quote](#)

[How Much Power Does Solar Inverter Use and How to...](#)

Learn how much power a solar inverter uses and get practical tips on designing the ideal solar power project. From understanding inverter efficiency to system sizing, this ...

[Free Quote](#)



[Does a solar inverter use a lot of electricity](#)

In addition, solar inverters continue to use a small amount of power in standby mode when the system is not actively generating electricity, such as on cloudy days or at night. However, this standby consumption is ...

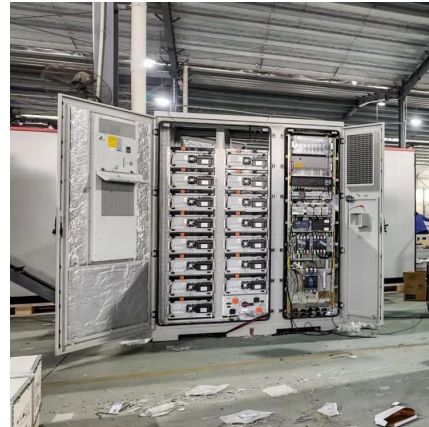
[Free Quote](#)

[How To Calculate Solar Panel Battery And...](#)



Learn how to calculate solar panel battery and inverter size for a household solar system, using Techfine's products for optimal performance and efficiency.

[Free Quote](#)



24V Solar Inverter

The Role of a 24V Solar Inverter A 24V solar inverter specifically works with a 24-volt solar power system. This kind of system is common for smaller solar setups, such as those used in RVs, boats, or ...

[Free Quote](#)



[How many V does the solar inverter have? , NenPower](#)

1. The number of Volts (V) in a solar inverter varies widely depending on the specific model and application, generally ranging from 12V to 1500V, with most residential models ...

[Free Quote](#)

Contact Us

For catalog requests, pricing, or partnerships, please visit:
<https://www.getonco.co.za>



Scan QR Code for More Information



<https://www.getonco.co.za>