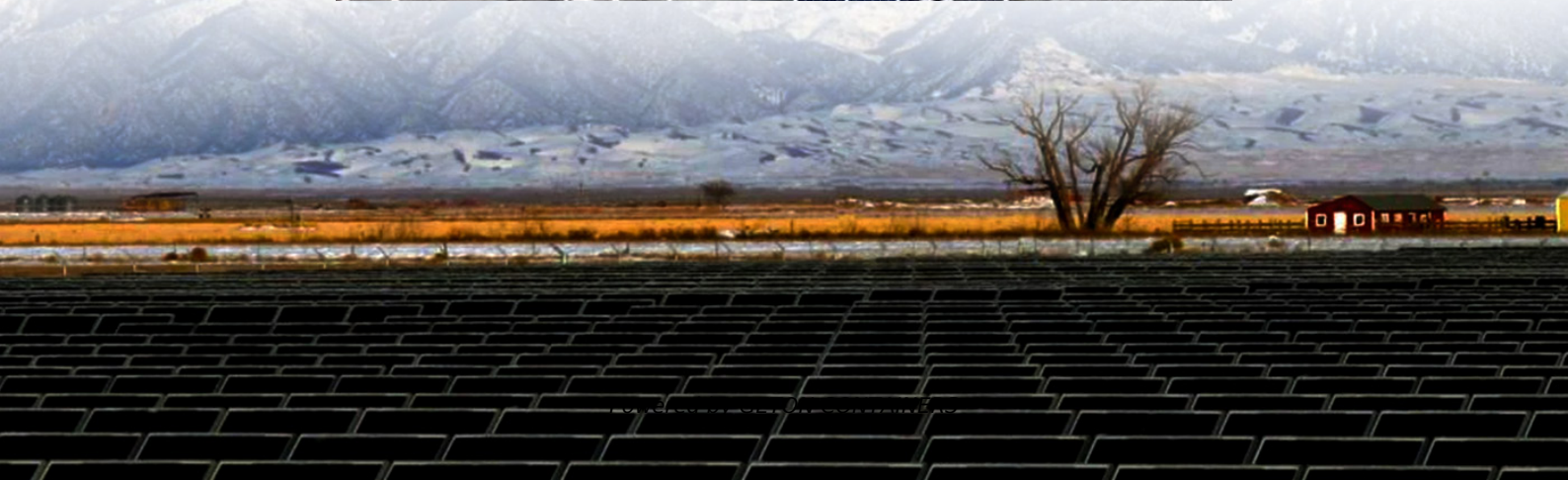
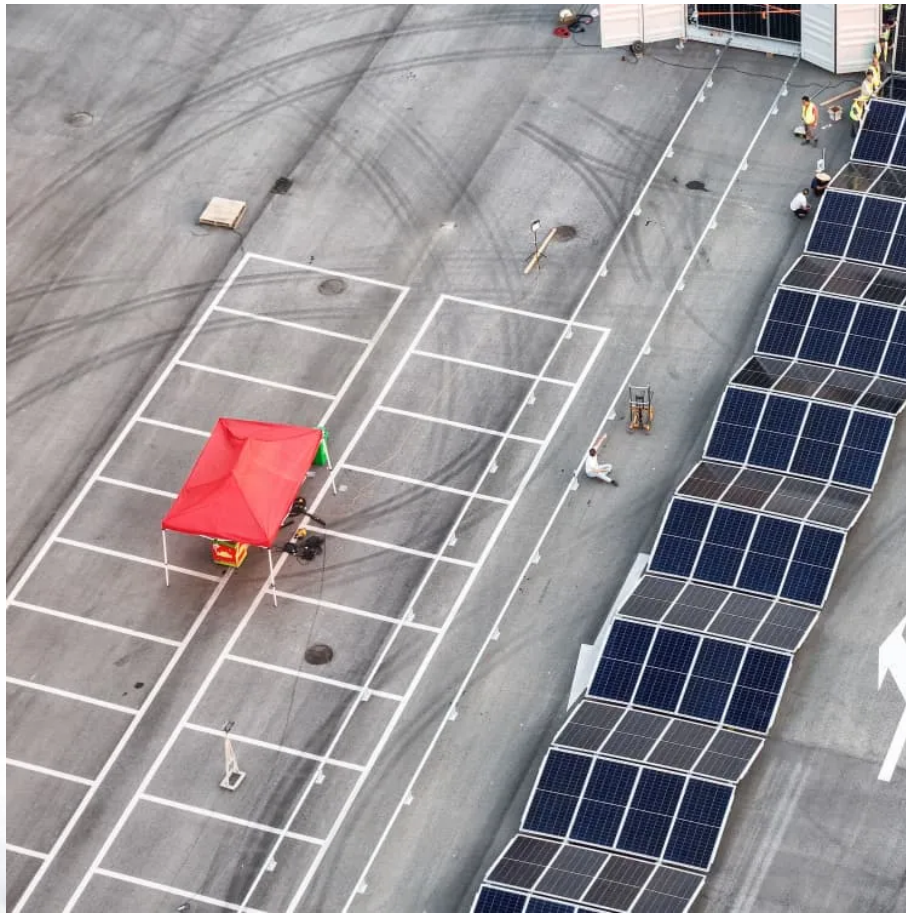


# **How many cells are in a 36v solar container lithium battery pack**





## Overview

---

How many cells do I need to create a battery pack?

So, you would need 42 cells in total to create a battery pack with 24V and 20Ah using cells with 3.7V and 3.5Ah. 1. Why do I need to connect cells in series for voltage?

Connecting cells in series increases the overall voltage of the battery pack by adding the voltage of each individual cell.

What is cells per battery calculator?

» Electrical » Cells Per Battery Calculator The Cells Per Battery Calculator is a tool used to calculate the number of cells needed to create a battery pack with a specific voltage and capacity. When designing a battery pack, cells can be connected in two ways: in series to increase voltage, or in parallel to increase capacity.

What is total cells per battery?

Total Cells = The total number of cells needed for the battery pack. This formula allows you to determine the exact number of cells you need based on your specific voltage and capacity needs, simplifying the design of the battery pack. Here are some of the key terms and conversions that are important for using the Cells Per Battery Calculator:.

What batteries are included in the battery library?

The library includes information on a number of batteries, including Samsung (ICR18650-30B, INR18650-25R), Sony (US18650GR, US18650VTC6), LG (LGABHG21865, LGDBMJ11865), Panasonic (UR18650NSX, NCR18650B), and many more. Max. Cell Voltage (V): Pack Max. Voltage: 14.40 V Max. Discharge Current: 0.55 A



## How many cells are in a 36v solar container lithium battery pack



### [36V LiFePO4 Cell Charge and Discharge](#)

...

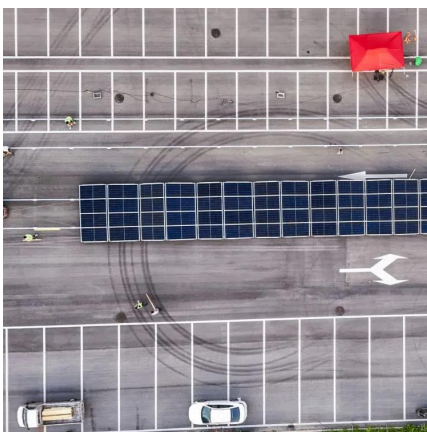
A 36V LiFePO4 battery pack typically consists of 12 cells connected in series, each with a nominal voltage of 3.2V, totaling 38.4V. However, the actual voltage can vary depending on the state of charge ...

[Free Quote](#)

### [36V Lithium Battery Guide: What You Need to Know](#)

A 36V lithium battery pack is one of the most common power systems used in mid-power electric equipment today. You'll see it in e-bikes, light electric scooters, compact cleaning machines, ...

[Free Quote](#)



### [36v lithium battery Archives -- Large Battery](#)

A 36V lithium battery is a rechargeable battery pack typically composed of ten lithium-ion cells in series (10S configuration), with a nominal voltage of 36V and a full-charge ...

[Free Quote](#)

### [Battery Pack Calculator , Good Calculators](#)

Here's a useful battery pack calculator for calculating the parameters of battery packs, including lithium-ion batteries. Use it to know the voltage, capacity, energy, and maximum



discharge ...

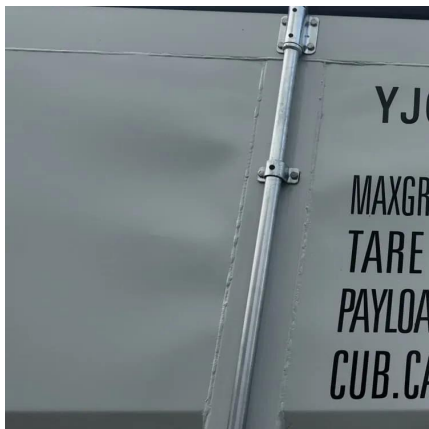
[Free Quote](#)



### [How Are the Cells Configured in 36V LiFePO4 Batteries?](#)

In a typical configuration of a 36V LiFePO4 battery pack, multiple cells are connected in series to achieve the desired voltage. For example, using cells rated at ...

[Free Quote](#)



### [36V Lithium Battery Pack: Specifications and Uses](#)

Understanding the specifications and uses of 36V lithium battery packs is essential for anyone looking to leverage their benefits in various applications, from electric bikes to solar ...

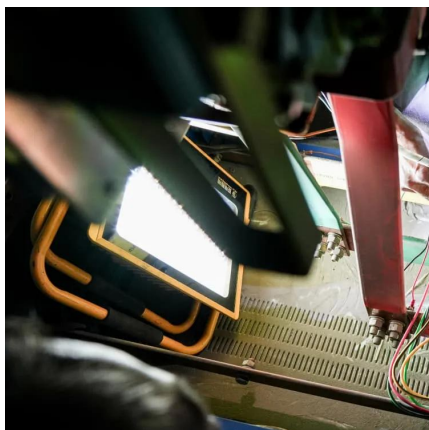
[Free Quote](#)



### [How Many Cells Are in a Lithium-Ion Energy ...](#)

Learn how to calculate the number of cells in lithium-ion energy storage batteries, with practical examples and expert insights into configurations and applications.

[Free Quote](#)





## [How Many Cells Are in a Lithium-Ion Energy Storage Battery?](#)

Learn how to calculate the number of cells in lithium-ion energy storage batteries, with practical examples and expert insights into configurations and applications.

[Free Quote](#)



## [36V LiFePO4 Cell Charge and Discharge Voltage Guide](#)

A 36V LiFePO4 battery pack typically consists of 12 cells connected in series, each with a nominal voltage of 3.2V, totaling 38.4V. However, the actual voltage can vary ...

[Free Quote](#)

## [How Many Cells in a 36 Volt Lithium Battery? A Definitive ...](#)

A 36-volt battery typically contains 18 cells. These cells are arranged in three rows, with each row having six cells. This setup helps the battery deliver the necessary voltage for ...

[Free Quote](#)



## [Cells Per Battery Calculator](#)

The Cells Per Battery Calculator is a tool used to calculate the number of cells needed to create a battery pack with a specific voltage and capacity. When designing a battery pack, cells can be connected in two ...

[Free Quote](#)



## [Cells Per Battery Calculator](#)

The Cells Per Battery Calculator is a tool used to calculate the number of cells needed to create a battery pack with a specific voltage and capacity. When designing a battery ...

[Free Quote](#)



## Contact Us

---

For catalog requests, pricing, or partnerships, please visit:  
<https://www.getonco.co.za>

## Scan QR Code for More Information



<https://www.getonco.co.za>