

How many hours can a 72v 1600w inverter be used





Overview

How long does an inverter battery last?

An inverter battery lasts about 5 to 10 hours when fully charged. The backup time depends on the battery capacity and the load, which is the total energy consumption. You can use a formula or a battery backup calculator to determine the exact duration based on your specific voltage and usage. Next, identify the specifications of your battery.

How long does a 1000 watt inverter last?

The total wattage drawn by the appliances determines how quickly the battery depletes. For example, if the inverter supplies 1000 watts, you can divide the battery's watt-hour rating by this number to estimate runtime. For instance, a 2000 Wh battery can theoretically run a 1000-watt inverter for about two hours.

How long can a 24V inverter run a 500W load?

Using this calculation, a 24V inverter with a 100ah battery and 93% efficiency can run a 500W load for 2.3 hours. You have a 24V inverter with a 150ah deep cycle battery. The inverter is 93% efficient. You want to run a 700 watt load, so how long can the inverter run this?

The inverter can run a 700 watt load for 2.4 hours.

How long can a 2000 watt battery run a 1000 watt inverter?

For instance, a 2000 Wh battery can theoretically run a 1000-watt inverter for about two hours. Additionally, real-world conditions may reduce this time due to efficiency losses in the inverter. Typically, inverters operate at around 80-90% efficiency, meaning a battery may last about 80-90% of the calculated time.



How many hours can a 72v 1600w inverter be used



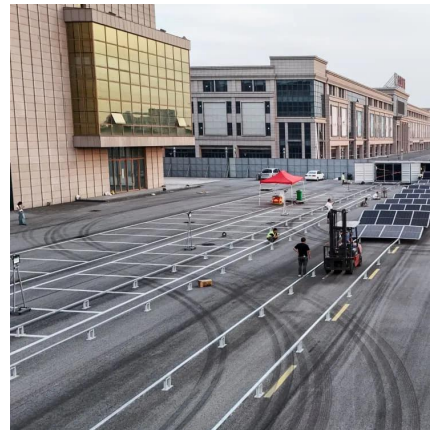
[How long will an inverter run off a battery?](#)

The answer is not a simple number of hours but rather a result of multiple factors, including battery capacity, load power, and system efficiency. This article will explore how long a battery can power an ...

[Free Quote](#)

[What Will An Inverter Run & For How Long? \(With Calculator\)](#)

Introduction - How Does An Inverter Work?What to Keep in Mind Before Running A Load on The InverterWhat Will An Inverter Run?How Long Will A 12V Battery Last with An Inverter?How Long Will An Inverter Last on A Battery?Related PostsA rule of thumb is that the total output load should be less than the inverter capacity. For example,if you have a 3000-watt inverter you can run up to 2500 watts of output load with it. As I have mentioned earlier you have to keep in mind the efficiency rate of your inverter before putting the load on it. That is all you need to know. The total wa See more on dotwatts Missing: hoursMust include: hoursportablesolarexpert



How to Calculate How Long an Inverter Will Last

How long an inverter lasts depends on the battery and load. This simple guide explains how to calculate inverter runtime of any size.

[Free Quote](#)

[How long will an inverter run off a battery?](#)

The answer is not a simple number of hours but rather a result of multiple factors, including battery capacity, load power, and system efficiency. This article will explore how long ...



Inverter Usage Calculator

Enter the battery capacity, inverter efficiency, and load power into the calculator to determine the usage time of an inverter. This calculator helps to estimate how long an inverter ...

[Free Quote](#)

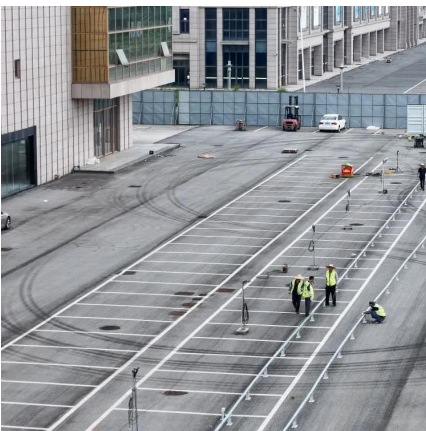
[Free Quote](#)



[How Long Can I Run The Power Inverter On My Battery?](#)

How long does an inverter that uses battery power actually last? This article will delve into this question and provide knowledge and calculations.

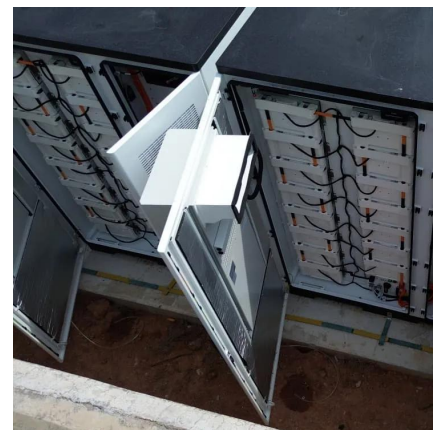
[Free Quote](#)



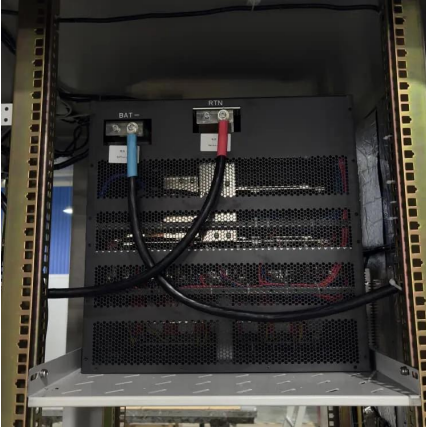
Inverter Usage Calculator

Enter the battery capacity, inverter efficiency, and load power into the calculator to determine the usage time of an inverter. This calculator helps to estimate how long an inverter can run a particular load with a ...

[Free Quote](#)



[How Long Can I Run The Power Inverter On...](#)



How long does an inverter that uses battery power actually last? This article will delve into this question and provide knowledge and calculations.

[Free Quote](#)

[Inverter Run Time Calculator](#)

An inverter run time refers to the duration an inverter can supply power to connected devices using the stored energy in a battery. This parameter is crucial for planning ...

[Free Quote](#)



[Understanding Battery Capacity and Inverter Compatibility](#)

In this guide, we will delve into the practical aspects of converting amp-hours to watt-hours, calculating battery run times, and determining the right inverter size, among other ...

[Free Quote](#)



[Inverter Energy Calculator](#)

The Inverter Energy Calculator is an essential tool for anyone relying on inverters for backup power, solar systems, or energy planning. By inputting just two values--power in watts and ...

[Free Quote](#)



[Inverter Usage Calculator & Formula Online Calculator Ultra](#)



How can I reduce energy consumption with my inverter? You can reduce energy consumption by choosing energy-efficient appliances, reducing the hours of usage, and ...

[Free Quote](#)

[How Long Will A Battery Last With An Inverter? Calculate ...](#)

An inverter battery lasts about 5 to 10 hours when fully charged. The backup time depends on the battery capacity and the load, which is the total energy consumption. You can ...

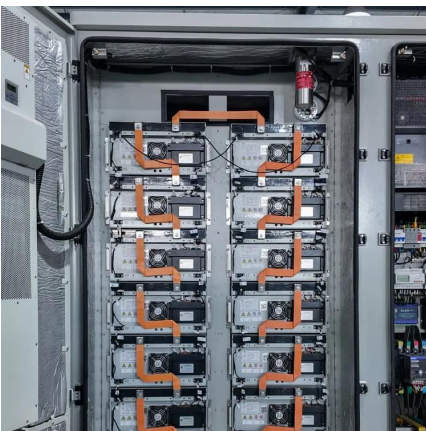
[Free Quote](#)



[What Will An Inverter Run & For How Long? \(With Calculator\)](#)

I saw on many forums that most people are confused about what they can run on their 1000,1500,2000,3000, & 5000-watt inverter and how long will their inverter last with a ...

[Free Quote](#)



Contact Us

For catalog requests, pricing, or partnerships, please visit:
<https://www.getonco.co.za>



Scan QR Code for More Information



<https://www.getonco.co.za>