

# **How many kilowatts of electricity does a 5g base station use**





## Overview

---

How much power does a 5G base station consume?

That's almost a threefold increase compared to 4G (5). One 5G base station is estimated to consume about as much power as 73 households (6), and 3x as much as the previous generation of base stations (5), (7).

Are 5G base stations causing more energy consumption?

However, Li says 5G base stations are carrying five times the traffic as when equipped with only 4G, pushing up power consumption. The carrier is seeking subsidies from the Chinese government to help with the increased energy usage.

Does 5G use more energy than 4G?

Carriers have been looking at energy efficiency for a few years now, but 5G will bring this to top of mind because it's going to use more energy than 4G. Telcos spend on average 5% to 6% of their operating expenses, excluding depreciation and amortization, on energy costs, according to MTN Consulting.

How much electricity does 5G use?

To achieve gigabit speeds, the plan with 5G is to have it operate at very high frequencies of 24-26 Gigahertz. For this reason, 5G requires millions of new so-called "small cells," for example, transmitters in lampposts. Billions of new wireless devices will soon be available worldwide. All of the above consumes electricity.



## How many kilowatts of electricity does a 5g base station use

---



### [5G base stations use a lot more energy than 4G base stations...](#)

Carriers have been looking at energy efficiency for a few years now, but 5G will bring this to top of mind because it's going to use more energy than 4G. Telcos spend on ...

### [Free Quote](#)

### [How much power does 5G consume?](#)

One 5G base station is estimated to consume about as much power as 73 households (6), and 3x as much as the previous generation of base stations (5), (7). When base stations, data centers ...

### [Free Quote](#)



### [How Much Power Does 5G Base Station Consume?](#)

The Silent Energy Crisis in Mobile Networks Have you ever wondered how much energy our hyper-connected world is consuming? 5G base stations, the backbone of next-gen ...

### [Free Quote](#)



### [5G power consumption is 2.5 to 3 times of 4G](#)

The power consumption of a 5G single station is 2.5 to 3.5 times that of a 4G single station due to AAU power consumption, the current full load power of a single station is nearly ...

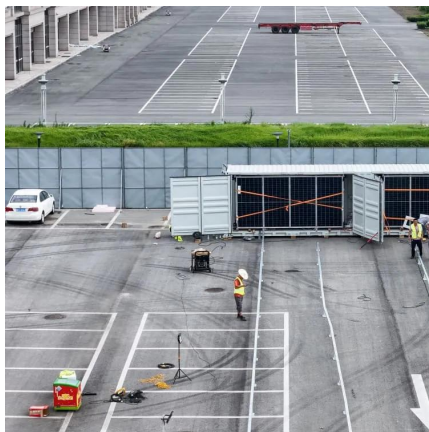
### [Free Quote](#)



### [Base station 5G power consumption](#)

The energy consumption of the fifth generation (5G) of mobile networks is one of the major concerns of the telecom industry. However, there is not currently an accurate and ...

[Free Quote](#)



### [How Much Power Does a 5G Base Station Consume? - Smart ...](#)

The rise of 5G technology brings faster speeds and lower latency, but it also raises questions about its energy consumption. As 5G networks are rolled out across the globe, it is important ...

[Free Quote](#)



### [How much power does 5G consume?](#)

The power consumption of a 5G single station is 2.5 to 3.5 times that of a 4G single station due to AAU power consumption, the current full load power of a single station is nearly 3700W.

[Free Quote](#)



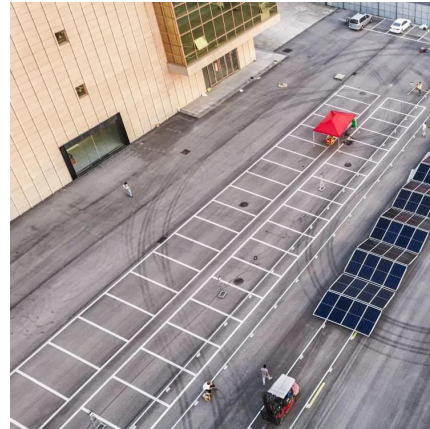




### [What is the Power Consumption of a 5G Base Station?](#)

Compared to its predecessor, 4G, the energy demand from 5G base stations has massively grown owing to new technical requirements needed to support higher data rates ...

[Free Quote](#)



## Contact Us

---

For catalog requests, pricing, or partnerships, please visit:  
<https://www.getonco.co.za>

### Scan QR Code for More Information



<https://www.getonco.co.za>