

How many square meters does 40 kilowatts of solar energy





Overview

How many square meters is a kilowatt solar panel system?

The area required for each kilowatt (kW) solar panel system is approximately 5 to 10 square meters, depending on the panel efficiency and wattage. 1. The effici.

How to calculate solar power per square meter?

You can calculate the solar power per square meter with the following calculators. 1. For Off-Grid It is the system that generates its own power with panels and a battery bank. In the off-grid calculator select from the option, shed cabin, house, or portable. Next, select the days of full autonomy, etc. 2. Solar Savings Calculator.

How much space does a kilowatt solar panel system need?

The area required for each kilowatt (kW) solar panel system is approximately 5 to 10 square meters, depending on the panel efficiency and wattage. 1. The efficiency of the solar panels influences the space needed significantly, with higher efficiency panels requiring less area per unit of power generated. 2.

How much solar energy is received per square meter?

The amount of solar intensity received by the solar panels is measured in terms of square per meter. The sunlight received per square meter is termed solar irradiance. As per the recent measurements done by NASA, the average intensity of solar energy that reaches the top atmosphere is about 1,360 watts per square meter.



How many square meters does 40 kilowatts of solar energy



Solar-Estimate

Audited calculation engine Over 3 million visitors a year What you will learn using the Solar-Estimate calculator 1 How many solar panels are needed to power your home 2 How ...

[Free Quote](#)

[Solar Power per Square Meter Calculator](#)

NREL's PVWatts ® Calculator Estimates the energy production of grid-connected photovoltaic (PV) energy systems throughout the world. It allows homeowners, small building ...

[Free Quote](#)



[How many square meters of space is required per kw solar ...](#)

The solar irradiance level, usually measured in kilowatts per square meter (kW/m^2), refers to the amount of sunlight that strikes a given area. Regions with high levels of solar ...

[Free Quote](#)



[Solar Power Per Square Meter Calculator](#)

Solar Power Per Square Meter Calculator: Ultimate Guide to Maximizing Your Solar Energy Output Calculate solar panel energy output per square meter. Get accurate daily, monthly, and ...



[Free Quote](#)



Photovoltaics

W stands for watts, kW for kilowatts. The p at Wp and kWp means 'peak'. Wp and kWp are the units for the nominal power. This is the power of the system at Standard Test Conditions. The surface area is given in square ...

[Free Quote](#)



[How many square meters of space is required ...](#)

The solar irradiance level, usually measured in kilowatts per square meter (kW/m^2), refers to the amount of sunlight that strikes a given area. Regions with high levels of solar irradiance, such as areas closer to ...

[Free Quote](#)



PVWatts Calculator

NREL's PVWatts [®] Calculator Estimates the energy production of grid-connected photovoltaic (PV) energy systems throughout the world. It allows homeowners, small building ...

[Free Quote](#)



[Solar Panel Output Per Square Meter](#)



Discover how much electricity solar panels generate per square meter, explore efficiency factors, technology comparisons, and future innovations in photovoltaic energy.

[Free Quote](#)



Solar-Rooftop Calculator

Online Solar Roof Top Calculator Calculates the number of solar panels, kilowatt capacity, daily unit production, and require area in Square Meter as well as Square Feet based on the ...

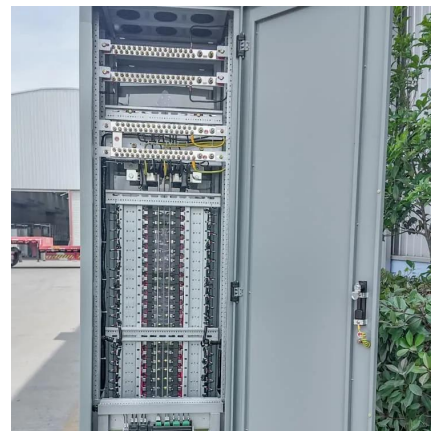
[Free Quote](#)



[Solar Energy Per Square Meter: How Much Power Can You Get?](#)

Solar energy per square meter refers to the amount of solar radiation impacting a specific area, measured in kilowatts per square meter (kW/m^2). This measurement is a key factor ...

[Free Quote](#)



[Solar Power per Square Meter Calculator](#)

A solar power per square meter calculator takes details regarding these factors and then gives the accurate output generated by the solar panel per square meter.

[Free Quote](#)

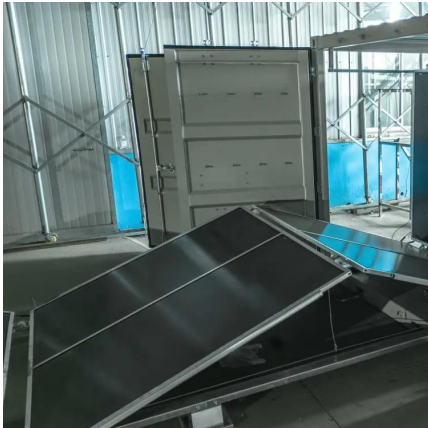


[Solar Energy Per Square Meter: How Much Power Can You...](#)



Solar energy per square meter refers to the amount of solar radiation impacting a specific area, measured in kilowatts per square meter (kW/m^2). This measurement is a key ...

[Free Quote](#)



Photovoltaics

W stands for watts, kW for kilowatts. The p at Wp and kWp means 'peak'. Wp and kWp are the units for the nominal power. This is the power of the system at Standard Test Conditions. The ...

[Free Quote](#)

Contact Us

For catalog requests, pricing, or partnerships, please visit:
<https://www.getonco.co.za>

Scan QR Code for More Information



<https://www.getonco.co.za>