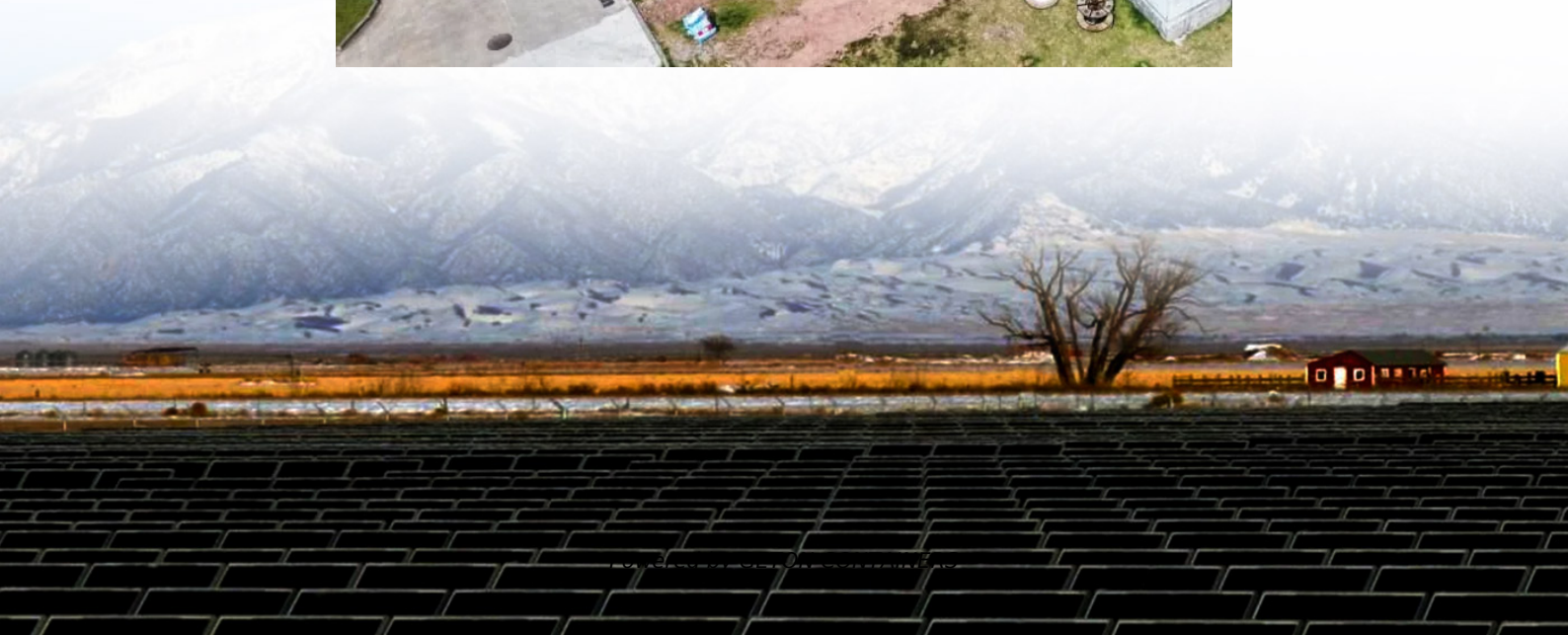


# **How many tons does a 67MWh energy storage container weigh**





## Overview

---

How much does a 40 foot shipping container weigh?

A 40-foot shipping container weighs between 3.8 and 4.2 metric tons (3,750kg or 8,268.8 lbs.) and an empty 40-foot high cube is between 3.9 and 4.4 metric tons (3,900kg or 8,598 lbs.). It's essential to understand the weight of a shipping container if you want to transport goods safely and avoid issues.

How much does a 10ft container weigh?

The gross weight of a 10ft container is 12.5 tons (11 tonnes). A 20ft (6m) shipping container weighs around 2.5 tons (2.2 tonnes). It can carry up to 2.5 tons (2 tonnes) as a payload. The gross weight of a 20ft container is 33.5 tons (30.5 tonnes). A 40ft (12m) shipping container weighs around 4.25 tons (3.75 UK tonnes).

How much does a 20ft container weigh?

On average, an empty 20ft containers weighs between 1.8 and 2.2 metric tons (2,300kg or 5,071.5 lbs.). A 40-foot shipping container weighs between 3.8 and 4.2 metric tons (3,750kg or 8,268.8 lbs.) and an empty 40-foot high cube is between 3.9 and 4.4 metric tons (3,900kg or 8,598 lbs.).

Why does a converted container weigh more than a mobile storage unit?

Converted containers like mobile storage units will weigh more due to the added insulation, interior walls, plumbing, and electrical systems. Below is a general breakdown of the tare weight, gross weight, and payload capacity of different container sizes: As we can see above, each container's weight keeps increasing as its dimensions become larger.



## How many tons does a 67MWh energy storage container weigh

---



### [How much does an energy storage container usually weigh](#)

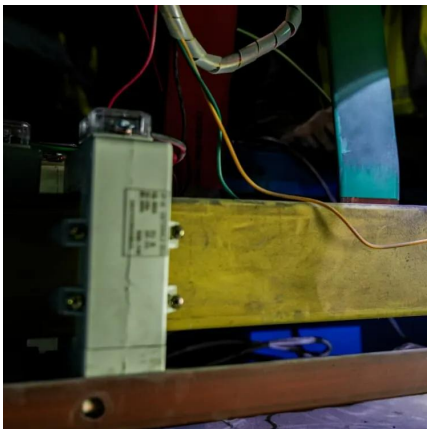
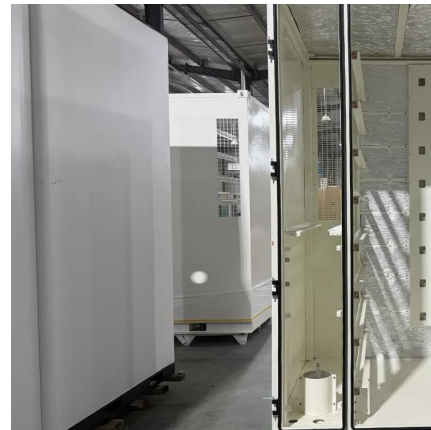
The weight of an energy storage container can vary depending on its size. For a 40ft storage container, the tare weight (empty weight) is approximately 8,554 lbs, while the payload weight ...

### [Free Quote](#)

### [How many tons does the Tianjin energy storage vehicle weigh?](#)

The weight of the Tianjin energy storage vehicle is approximately 5 to 8 tons, mainly dependent on the design and energy capacity specifications, \*\*3. Various materials ...

### [Free Quote](#)



### [Shipping container weight: Why it matters \[+ how to ...](#)

On average, an empty 20ft containers weighs between 1.8 and 2.2 metric tons (2,300kg or 5,071.5 lbs.). A 40-foot shipping container weighs between 3.8 and 4.2 metric tons ...

### [Free Quote](#)

### [CONTAINER ENERGY STORAGE SYSTEM](#)

Energy storage container size . Size:40ft, 12196\*2438\*2591 (W\*D\*H)mm. Size Standard shipping containers, typically 20 or 40 feet in length, offer ample space for housing BESS ...

### [Free Quote](#)





[How much does an energy storage container usually weigh](#)

How much energy can be stored in a 20-foot liquid cooling container? 35% more energy can be stored in 20-foot container, up from the traditional design of 3727kWh to 5016kWh. Higher ...

[Free Quote](#)



[Shipping container weight: Why it matters \[+ how to calculate\]](#)

On average, an empty 20ft containers weighs between 1.8 and 2.2 metric tons (2,300kg or 5,071.5 lbs.). A 40-foot shipping container weighs between 3.8 and 4.2 metric tons ...

[Free Quote](#)



[Energy storage container, BESS container](#)

What is energy storage container? SCU uses standard battery modules, PCS modules, BMS, EMS, and other systems to form standard containers to build large-scale grid ...

[Free Quote](#)



[How Much Does an Empty Shipping Container Weigh?](#)



In this expert guide, Daguer Logistics breaks down the fundamentals of container weights, their real-world implications, and how to calculate total freight mass accurately. We ...

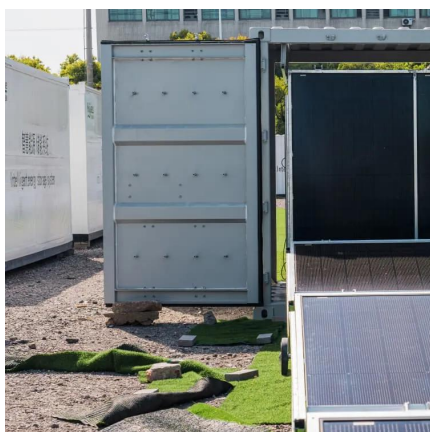
[Free Quote](#)



[How Much Does a Shipping Container Weigh: A Breakdown](#)

How much does a shipping container weigh? Well, the answer differs depending on which container you're referring to. Depending on how much cargo they carry and their ...

[Free Quote](#)



[How many tons does the Tianjin energy ...](#)

The weight of the Tianjin energy storage vehicle is approximately 5 to 8 tons, mainly dependent on the design and energy capacity specifications, \*\*3. Various materials utilized in construction ...

[Free Quote](#)



[How Much Does a Shipping Container Weigh?](#)

At Equihaul, we help customers choose the right size and type of container based not just on space, but also on weight capacity and delivery logistics. Here's everything you ...

[Free Quote](#)



## Contact Us

---

For catalog requests, pricing, or partnerships, please visit:  
<https://www.getonco.co.za>

## Scan QR Code for More Information



<https://www.getonco.co.za>