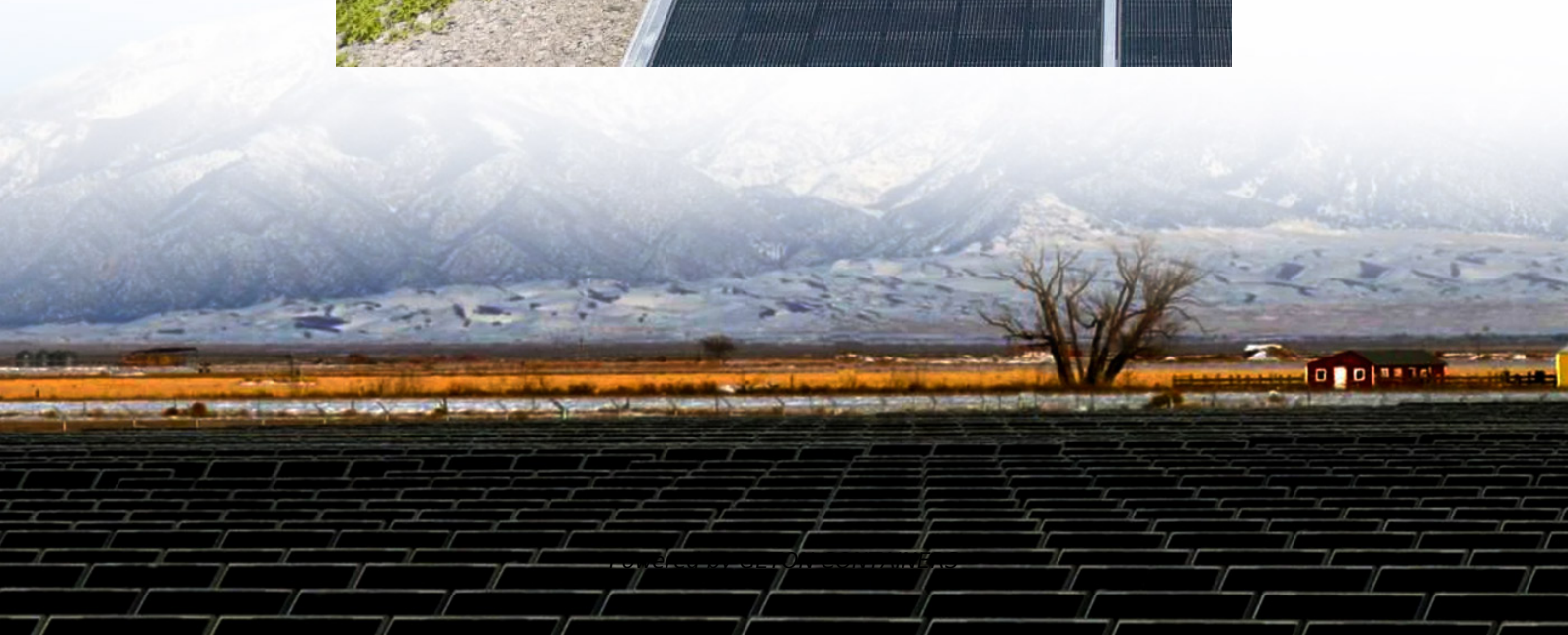


# **How many volts does the inverter battery have**





## Overview

---

What voltage does an inverter use?

In different countries, the applicable AC voltage is different, and most countries use 110v, 120v output inverter voltage. You can confirm on the search engine or see how much AC voltage the home appliance label uses. How can the quality of inverter output voltage be measured?

.

How much battery does a 12 volt inverter need?

As a rule of thumb, the minimum required battery capacity for a 12-volt system is around 20 % of the inverter capacity. For 24-volt inverters, it is 10 %. The battery capacity for a 12-volt Mass Sine 12/1200, for instance, is 240 Ah, while a 24-volt Mass Sine 24/1500 inverter would require at least 150 Ah.

How much battery does a 24 volt inverter use?

For 24-volt inverters, it is 10 %. The battery capacity for a 12-volt Mass Sine 12/1200, for instance, is 240 Ah, while a 24-volt Mass Sine 24/1500 inverter would require at least 150 Ah. The indicated battery capacity is only for the inverter. The capacity required for other loads should be added to it. How much power does an inverter consume?

.

What is the start voltage of a 12V inverter?

In the case of a 12V inverter, the start inverter voltage is typically around 9.5VDC. This threshold ensures that the inverter can begin its operation reliably without placing undue stress on the connected battery. What is cut off voltage in inverter?



## How many volts does the inverter battery have

---



### [Lithium Battery for Inverter: Pros, Specs, and Tips](#)

How many hours will a 100Ah lithium battery run an inverter? If you use a 100Ah 12V lithium battery (1200Wh capacity), and your load is 300 watts, it will run for approximately ...

[Free Quote](#)

### [Understanding inverter voltage](#)

In this article, let's embark on a comprehensive journey to unravel the mysteries surrounding inverter voltage, exploring its nuances, applications, and the Tycorun inverter's unique characteristics.

[Free Quote](#)



### [How many volts does the energy storage inverter have?](#)

How many volts does the energy storage inverter have? 1. Energy storage inverters typically operate within a range of voltages, commonly between 12V to 60V, 2. The ...

[Free Quote](#)

### [Lithium Battery for Inverter: Pros, Specs, and ...](#)

How many hours will a 100Ah lithium battery run an inverter? If you use a 100Ah 12V lithium battery (1200Wh capacity), and your load is 300 watts, it will run for approximately 4 hours.







[Free Quote](#)



### [Inverter Battery Voltage Chart](#)

An inverter battery voltage chart shows the relationship between a battery's charge level and its voltage. Battery voltage charts describe the relation between the battery's charge ...

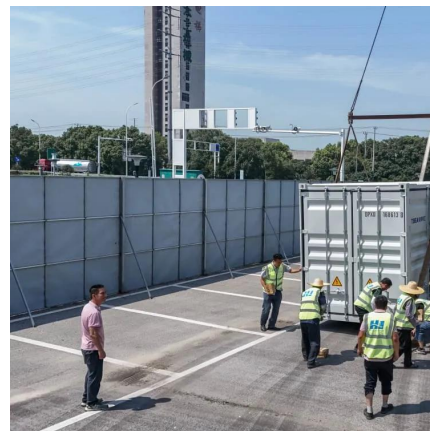
[Free Quote](#)



### [A comprehensive guide to inverter voltage](#)

What is a 12VDC to 120VAC inverter? 12VDC to 120VAC Inverter is a common device that converts 12V DC power to AC power with a nominal output of 120V. 120 volts AC ...

[Free Quote](#)



### [A comprehensive guide to inverter voltage](#)

What is a 12VDC to 120VAC inverter? 12VDC to 120VAC Inverter is a common device that converts 12V DC power to AC power with a nominal output of 120V. 120 volts AC is the standard household voltage in ...

[Free Quote](#)





## [Frequently Asked Questions about Inverters](#)

Frequently Asked Questions about Inverters How much battery capacity do I need with an inverter? As a rule of thumb, the minimum required battery capacity for a 12-volt system is ...

[Free Quote](#)



## [How Many Volt of Inverter Battery \(With Features\)](#)

Inverter batteries are one of the most important components in an off-grid solar power system. It's rated at 12 volts, but some larger systems may use 24-volt batteries.

[Free Quote](#)

## [How many volts does the energy storage](#) [...](#)

How many volts does the energy storage inverter have? 1. Energy storage inverters typically operate within a range of voltages, commonly between 12V to 60V, 2. The voltage can significantly vary ...

[Free Quote](#)



## [Inverter Battery Voltage: How Many Volts Are Needed For ...](#)

An inverter battery typically operates at 12V, 24V, or 48V. These voltages represent the nominal direct current (DC) needed for the inverter's function.

[Free Quote](#)



## [Complete Guide to Inverter Batteries - NPP POWER](#)

Inverter batteries is a rechargeable battery built to supply backup power for inverters, which convert direct current (DC) into alternating current (AC). These batteries store ...

[Free Quote](#)



## [How Many Volt of Inverter Battery \(With Features\)](#)

Is 12V Or 24V Inverter Better? Is 24V Better Than 12V? How Many Volts Is An Inverter? Inverter Battery Voltage Chart 12V Tubular Battery Full Charge Voltage 150ah Battery Voltage Inverter Battery Size Calculator FAQs Conclusion The voltage of inverter batteries varies depending on the type and size of the inverter. The voltage of a lead-acid battery is usually between 12 and 48 volts, while the voltage of a lithium ion battery is typically between 24 and 100 volts. See more on thepowerfacts Published: Sep 10, 2022 Mastervolt

## **Frequently Asked Questions about Inverters - Mastervolt**

Frequently Asked Questions about Inverters How much battery capacity do I need with an inverter? As a rule of thumb, the minimum required battery capacity for a 12-volt system is ...

[Free Quote](#)

## [Understanding inverter voltage](#)

In this article, let's embark on a comprehensive journey to unravel the mysteries surrounding inverter voltage, exploring its nuances, applications, and the Tycorun inverter's ...

[Free Quote](#)



## Contact Us

---

For catalog requests, pricing, or partnerships, please visit:  
<https://www.getonco.co.za>

## Scan QR Code for More Information



<https://www.getonco.co.za>