

How many watts does a 30a solar container lithium battery match with a solar panel





Overview

What size solar battery do I Need?

Calculate the perfect battery capacity for your solar system, inverter, or car with accurate battery size calculator For your 5kWh daily usage and 8 hours backup, you need a 180.5Ah 12V Lithium-ion battery. We recommend a 200Ah commercial size. Solar battery storage systems allow you to store excess solar energy for use when the sun isn't shining.

How many watts a solar panel to charge a lithium battery?

You need around 1600-2000 watts of solar panels to charge most of the 48V lithium batteries from 100% depth of discharge in 6 peak sun hours with an MPPT charge controller. What Size Solar Panel To Charge 120Ah Battery?

.

How many watts a solar panel to charge a 24v battery?

You need around 600-900 watts of solar panels to charge most of the 24V lithium (LiFePO4) batteries from 100% depth of discharge in 6 peak sun hours with an MPPT charge controller. Full article: What Size Solar Panel To Charge 24v Battery?

What Size Solar Panel To Charge 48V Battery?

.

Why do you need a solar battery size calculator?

Using a reliable battery size calculator can help prevent under-sizing or overspending. Proper solar battery sizing improves reliability, extends battery lifespan, and ensures your system delivers consistent performance year-round. How do I calculate battery size for a solar system?



How many watts does a 30a solar container lithium battery match v



[The Complete Off Grid Solar System Sizing Calculator](#)

An off-grid solar system's size depends on factors such as your daily energy consumption, local sunlight availability, chosen equipment, the appliances that

[Free Quote](#)

[The Complete Off Grid Solar System Sizing ...](#)

An off-grid solar system's size depends on factors such as your daily energy consumption, local sunlight availability, chosen equipment, the appliances that

[Free Quote](#)



[Lithium Ion Solar Battery Sizing: Accurate kWh and kW](#)

Easily size your lithium-ion solar battery for home or business. Our guide helps you build a safe, efficient solar bank for reliable power, season after season.

[Free Quote](#)



[Solar Panel To Battery Ratio \(Kw + Watts\)](#)

Matching solar panel to battery size Let's take a look at the general rule of thumb mentioned earlier: a 1:1 ratio of batteries and watts. A 200-watt panel and 200aH battery is a great combination to begin with. If ...



[Free Quote](#)



[Solar Battery Size Guide: kWh, Inverter & Runtime](#)

Size your solar battery using load profile, critical loads, efficiency and DoD. Calculator matches kWh, inverter and runtime for code-compliant installs.

[Free Quote](#)



[Lithium Ion Solar Battery Sizing: Accurate ...](#)

Easily size your lithium-ion solar battery for home or business. Our guide helps you build a safe, efficient solar bank for reliable power, season after season.

[Free Quote](#)



[Best Battery Size Calculator For Solar And Off-Grid Systems](#)

Free battery size calculator - calculate the perfect battery capacity for your solar system, inverter, or car. Works with lithium-ion, lead-acid, and AGM batteries

[Free Quote](#)



[Solar Panel Size Calculator](#)



Use our solar panel size calculator to find out the ideal solar panel size to charge your lead acid or lithium battery of any capacity and voltage. For example, 50ah, 100ah, ...

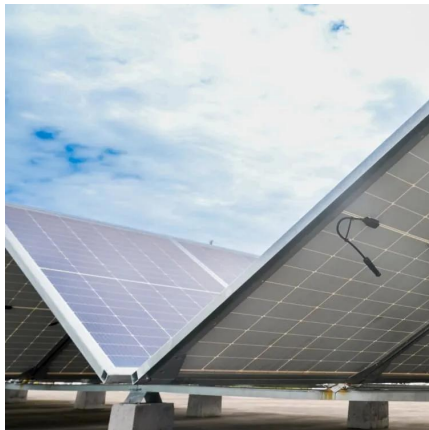
[Free Quote](#)



[How to Calculate Solar Panel Battery and ...](#)

Avoiding common mistakes when calculating solar panel battery, inverter, and system size will help you ensure a proper design of your solar setup and a maximum return of investment. So, let's take a look: #1. ...

[Free Quote](#)



[How to Calculate Solar Panel Battery and Inverter: Full Guide](#)

Avoiding common mistakes when calculating solar panel battery, inverter, and system size will help you ensure a proper design of your solar setup and a maximum return of ...

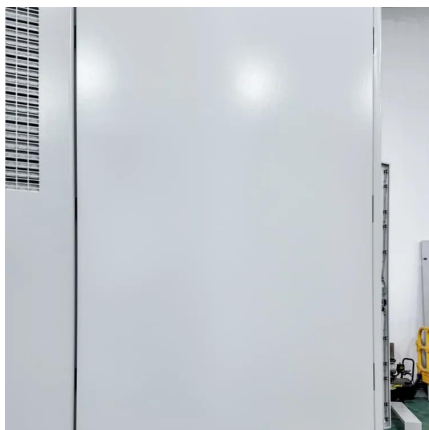
[Free Quote](#)



[Solar Panel And Battery Sizing Calculator](#)

A Solar Panel and Battery Sizing Calculator helps you determine the optimal size of solar panels and batteries required to meet your energy needs.

[Free Quote](#)



[Solar Panel To Battery Ratio \(Kw + Watts\)](#)



Matching solar panel to battery size Let's take a look at the general rule of thumb mentioned earlier: a 1:1 ratio of batteries and watts. A 200-watt panel and 200aH battery is a ...

[Free Quote](#)



Contact Us

For catalog requests, pricing, or partnerships, please visit:
<https://www.getonco.co.za>

Scan QR Code for More Information



<https://www.getonco.co.za>