

# How many watts does a meter of solar panel generate





## Overview

---

What is solar panel watts per square meter (W/M)?

Solar panel watts per square meter (W/m) measures the power output of a solar panel based on its size. Compare solar panels to see which generates most electricity per square meter. A higher W/m value means a solar panel produces more power from a given area. This can help you determine how many solar panels you need for your energy needs.

How do you calculate solar panel output in watts per square meter?

The formula to calculate the solar panel output and how much energy solar panels produce (in watts) using watts per square meter is as follows: Solar Panel Output (W) = Watts per Square Meter (W/m<sup>2</sup>) × Area of Solar Panel (m<sup>2</sup>).

How much energy does a square meter of solar panels generate?

On a clear day with high solar irradiance, a square meter of efficient solar panels can generate around 150-250 watt-hours (Wh) of energy in an hour. It translates to approximately 1.5-2.5 kWh per day. Remember that this is a rough estimate and can vary based on factors such as panel efficiency, geographic location, and weather conditions.

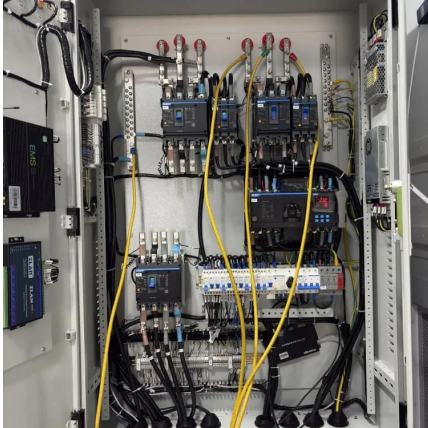
What is watts per square meter?

Watts per square meter is a measurement that quantifies the power output of solar panels relative to their surface area. It indicates how much electricity a solar panel produces per space unit, allowing for comparisons between different panel types and sizes.



## How many watts does a meter of solar panel generate

---



### [Solar Panel Wattage & Output Explained](#)

Solar panel wattage is the maximum amount of power a solar panel can produce under ideal conditions. It's measured in watts (W) and represents the panel's peak power output. For example, a 400-watt solar ...

### [Free Quote](#)

### [How Much Energy Does A Solar Panel Produce?](#)

Quick Takeaways Solar panels degrade slowly, losing about 0.5% output per year, and often last 25-30 years or more. Most residential panels in 2025 are rated 250-550 watts, ...

### [Free Quote](#)



### [How many watts per square meter is a solar ...](#)

1. The average power output of a solar panel is approximately 150 to 400 watts per square meter, depending on various factors including the technology used and ...

### [Free Quote](#)

### [Solar Panel Wattage & Output Explained](#)

Solar panel wattage is the maximum amount of power a solar panel can produce under ideal conditions. It's measured in watts (W) and represents the panel's peak power ...

### [Free Quote](#)





### [How Much Energy Can Solar Panels ...](#)

Explore how much energy solar panels generate, factors affecting their efficiency, and how to maximize solar power output for homes and businesses. Learn from Rayzon Solar's advanced PV solutions.

[Free Quote](#)



### [Watts Per Square Meter Solar Panel - The Go-to Guide](#)

On a clear day with high solar irradiance, a square meter of efficient solar panels can generate around 150-250 watt-hours (Wh) of energy in an hour. It translates to ...

[Free Quote](#)



### [How many watts per square meter is a solar panel? . NenPower](#)

1. The average power output of a solar panel is approximately 150 to 400 watts per square meter, depending on various factors including the technology used and ...

[Free Quote](#)

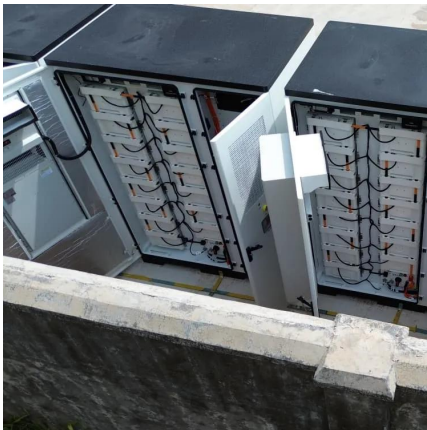




### [How Much Energy Can Solar Panels Generate? Power Output ...](#)

Explore how much energy solar panels generate, factors affecting their efficiency, and how to maximize solar power output for homes and businesses. Learn from Rayzon Solar's advanced ...

[Free Quote](#)



### [How Much Energy Does A Solar Panel ...](#)

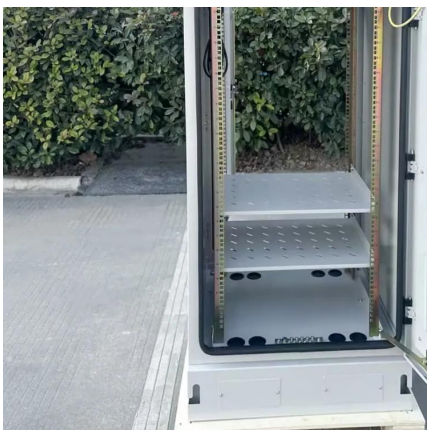
Quick Takeaways Solar panels degrade slowly, losing about 0.5% output per year, and often last 25-30 years or more. Most residential panels in 2025 are rated 250-550 watts, with 400-watt models becoming ...

[Free Quote](#)

### [Solar Panel Wattage Explained: How Many Watts Do You ...](#)

Confused about solar panel wattage? Learn how many watts you need, how solar output works, and how to calculate the right solar setup for your home, RV, or cabin.

[Free Quote](#)



### [How to Understand Solar Panel Watts Per Square Meter](#)

Different panel types, such as monocrystalline, polycrystalline, thin-film, and high-efficiency panels, have varying typical watts per meter square outputs. Maximizing watts per ...

[Free Quote](#)



## Contact Us

---

For catalog requests, pricing, or partnerships, please visit:  
<https://www.getonco.co.za>

## Scan QR Code for More Information



<https://www.getonco.co.za>