

How much current does a 5kw inverter have





Overview

What is a 5kw inverter?

A 5kW inverter is designed to convert up to 5,000 watts of DC power into AC power, making it suitable for small to medium-sized homes or systems with lower energy requirements. In contrast, larger inverters, such as 10kW or 20kW models, can handle more power and are often used in larger homes or commercial applications.

How many watts can a 5 kW solar inverter produce?

The maximum nominal output AC power of a 5 kW solar inverter is 5,000 watts, and the maximum output current is 22.7 amperes. The best ones from brands like SunGrow offer safety features such as PV reverse connection protection, AC short circuit protection, leakage current protection, and grid monitoring.

Can a 5kw inverter run a house?

BUT, a 5kw inverter does not mean that you are overall limited to run your house at a maximum of 5 kw all the time. I see many manufacturers refer to a continuous AC pass-through power or current.

Can a 5kw solar inverter carry more than 5kW?

When an inverter is advertised as 5kw, typically that refers to its continuous “inverting capability” meaning – to me – that while eskom power is off, you cannot carry more than 5kw load; or even while power (eskom) is on, you cannot contribute more than 5kw from your solar array or battery. This is correct.



How much current does a 5kw inverter have



[How Many Solar Panels Can A 5kW Inverter Handle?](#)

A 5kW inverter can convert up to 5,000 watts of DC (direct current) electricity into AC (alternating current) electricity. The number of solar panels it can handle depends on the ...

[Free Quote](#)

[Powering Your Dream Home: Can a 5kW Inverter Get the Job ...](#)

Additionally, consider the inverter's compatibility with your existing energy system, its warranty and support, and the manufacturer's reputation for producing high-quality ...

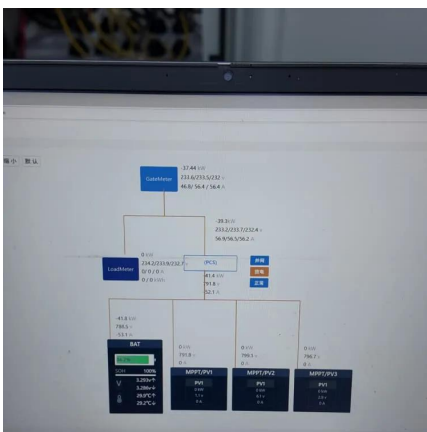
[Free Quote](#)



[5kW Inverters: Essential Guide to Choosing the Best for Your ...](#)

Understanding 5kW Inverters 5kW inverters are designed to convert the direct current (DC) electricity generated by solar panels into alternating current (AC) electricity, which ...

[Free Quote](#)



[Really understanding the difference between 5kw and 8kw ...](#)

BUT, a 5kw inverter does not mean that you are overall limited to run your house at a maximum of 5 kw all the time. I see many manufacturers refer to a continuous AC pass ...



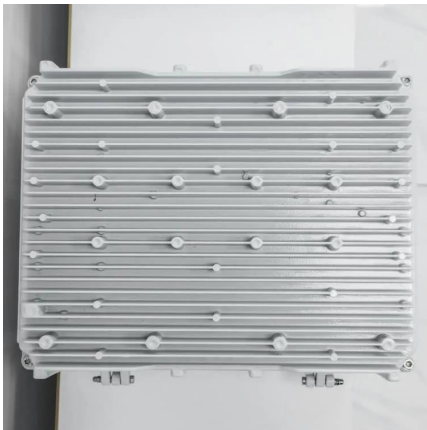
[Free Quote](#)



[What can a 5kw inverter run?](#)

5KW solar power inverter can run a washing machine, satellite dish receiver, water pump, and TV, etc. If you have these appliances in your home, a 5KW inverter is sufficient. It ...

[Free Quote](#)



[How Many Solar Panels Can A 5kW Inverter ...](#)

A 5kW inverter can convert up to 5,000 watts of DC (direct current) electricity into AC (alternating current) electricity. The number of solar panels it can handle depends on the wattage of individual panels.

[Free Quote](#)



[What can a 5kw inverter run?](#)

5KW solar power inverter can run a washing machine, satellite dish receiver, water pump, and TV, etc. If you have these appliances in your home, a 5KW inverter is sufficient. It produces 20kwh per day. ...

[Free Quote](#)





[5kva Inverter Load Capacity: What Can It ...](#)

While a 5kva inverter can handle a particular load, several factors can affect its actual load capacity. Battery Capacity: The capacity of the battery linked to the inverter plays a crucial role in determining how ...

[Free Quote](#)



[5kva Inverter Load Capacity: What Can It Carry](#)

While a 5kva inverter can handle a particular load, several factors can affect its actual load capacity. Battery Capacity: The capacity of the battery linked to the inverter plays a ...

[Free Quote](#)



[5 KW Solar Inverter , A Complete Guide on Types, Pros](#)

A 5 kW inverter is designed to deliver about 5,000 watts when appliances have a power factor of 1, which means they use electricity very efficiently. But most household ...

[Free Quote](#)



[5 KW Solar Inverter , A Complete Guide on ...](#)

A 5 kW inverter is designed to deliver about 5,000 watts when appliances have a power factor of 1, which means they use electricity very efficiently. But most household appliances have a power factor between ...

[Free Quote](#)





Contact Us

For catalog requests, pricing, or partnerships, please visit:
<https://www.getonco.co.za>

Scan QR Code for More Information



<https://www.getonco.co.za>