

How much electricity can a 100A battery store





Overview

How much power does a 100Ah battery store?

A 100Ah battery at 12V stores 1200 watt-hours of energy (100Ah x 12V). If your household consumes an average of 400 watt-hours per day during non-solar hours, this battery could theoretically provide power for about 3 hours. However, factors like DoD and system efficiency need to be considered.

How many watts can a 100Ah battery power?

A 100Ah battery can theoretically provide up to 1200 watt-hours (Wh) of energy when fully charged, making it suitable for powering various devices depending on their wattage requirements. The actual output will vary based on efficiency losses and specific load conditions. Read more: [How Can a 100Ah Battery Operate a 2000W Inverter?](#)

.

How long does a 100 watt 12V battery last?

Yes, but duration is limited. A 1000W load consumes 1000Wh per hour. With a 100Ah 12V battery (1200Wh), you'll get just over an hour of runtime, assuming 100% efficiency. How long will a 100Ah 12V battery last?

Depends on your load. A 100W device would run for approximately 12 hours on a fully charged 100Ah 12V battery.

How much power does a 12V 100Ah battery provide?

The voltage rating of a battery plays a crucial role in determining the total amount of power it can deliver. For example, a 12V 100Ah battery provides about 1200 watt-hours (Wh) of energy (calculated as 12 volts x 100 amp-hours). This means it can supply 1200 watts for one hour or proportionally less power for a longer time.



How much electricity can a 100A battery store



[How Long Can a 100Ah Lithium Battery Power Your Device?](#)

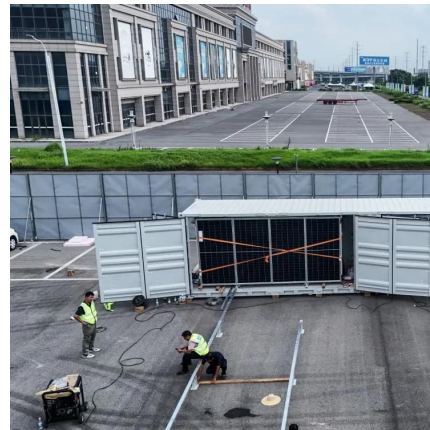
A 100Ah lithium battery is versatile and can power a wide range of devices, including: RVs and Campervans: You can run lights, fans, TVs, and other appliances for ...

[Free Quote](#)

[How Many kW is a 100Ah 12V Battery?](#)

A 100Ah 12V battery can deliver a total energy capacity of 1.2 kWh (kilowatt-hours). This is calculated by multiplying the amp-hour rating by the voltage: $100 \text{ Ah} \times 12 \text{ V} = 1200 \text{ Wh}$...

[Free Quote](#)



[How Long Can a 100Ah Lithium Battery ...](#)

A 100Ah lithium battery is versatile and can power a wide range of devices, including: RVs and Campervans: You can run lights, fans, TVs, and other appliances for several hours on a single charge. Solar ...

[Free Quote](#)



[What Does "100Ah" in a Battery Mean? A...](#)

A 100Ah battery means the battery can supply 100 ampere-hours (Ah) of charge over a given period, typically rated over 10 or 20 hours. This rating helps determine how long the battery will last under different ...



[Free Quote](#)



[How Many Watts Can a 100Ah Battery Run?](#)

A 100Ah battery can theoretically provide up to 1200 watt-hours (Wh) of energy when fully charged, making it suitable for powering various devices depending on their wattage ...

[Free Quote](#)



[How many watts is a 100ah battery?](#)

A 12V-100Ah battery can store 1200Wh or 1.2kWh of energy, and therefore could be said to have 1.2kWh of energy capacity. If the 100Ah battery is rated at 24 Volts, such as this Ampere-Time battery, it can store ...

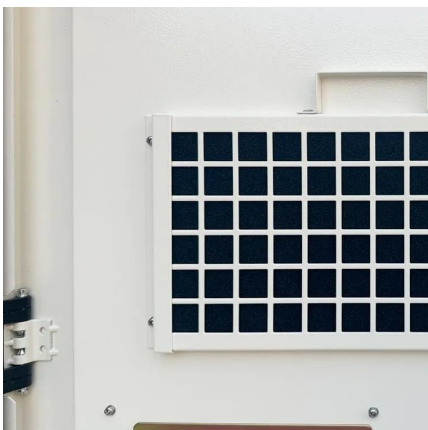
[Free Quote](#)



What Does "100Ah" in a Battery Mean? A Beginner's Guide to Battery

A 100Ah battery means the battery can supply 100 ampere-hours (Ah) of charge over a given period, typically rated over 10 or 20 hours. This rating helps determine how long ...

[Free Quote](#)





[Understanding Battery Capacity in Terms of Watt Hours for a ...](#)

What Is Battery Capacity and Why It Matters
Definitions of Amp Hours (Ah) and Watt Hours (Wh) Battery capacity refers to the amount of energy a battery can store. This ...

[Free Quote](#)



[What Is A 100Ah Lithium Battery Used For?](#)

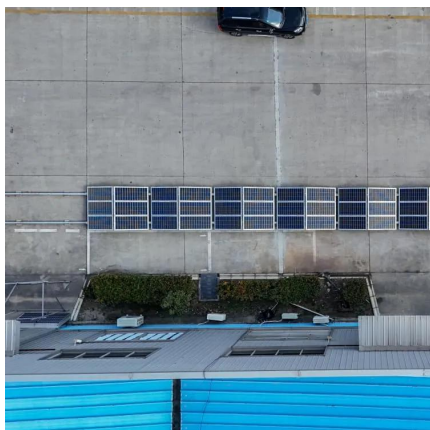
Are 100Ah lithium batteries suitable for solar energy storage? Yes, their high cycle life and 80-100% depth of discharge make them ideal for daily solar cycling. A 100Ah lithium ...

[Free Quote](#)

[Understanding Battery Capacity in Terms of ...](#)

What Is Battery Capacity and Why It Matters
Definitions of Amp Hours (Ah) and Watt Hours (Wh) Battery capacity refers to the amount of energy a battery can store. This capacity is usually measured in amp ...

[Free Quote](#)



How Long Does a 100Ah Battery Last? - Calculated Runtime Guide (2025)

A 100Ah battery at 12V stores 1200 watt-hours of energy (100Ah x 12V). If your household consumes an average of 400 watt-hours per day during non-solar hours, this battery ...

[Free Quote](#)



[How much electricity can a 100A battery store? - NenPower](#)

A 100A battery can store up to 1000 watt-hours of energy, resulting in continuous electricity supply for approximately 10 hours assuming a discharge rate of 10A.

[Free Quote](#)



[How Long Does a 100Ah Battery Last? - Calculated Runtime ...](#)

A 100Ah battery at 12V stores 1200 watt-hours of energy ($100\text{Ah} \times 12\text{V}$). If your household consumes an average of 400 watt-hours per day during non-solar hours, this ...

[Free Quote](#)

[How many watts is a 100ah battery?](#)

A 12V-100Ah battery can store 1200Wh or 1.2kWh of energy, and therefore could be said to have 1.2kWh of energy capacity. If the 100Ah battery is rated at 24 Volts, such as ...

[Free Quote](#)



Contact Us

For catalog requests, pricing, or partnerships, please visit:
<https://www.getonco.co.za>



Scan QR Code for More Information



<https://www.getonco.co.za>