

Inner double glass components





Overview

What are insulating glass units (IGUs)?

Introduction Insulating Glass Units (IGUs) enhance energy efficiency, thermal and acoustic insulation, and indoor comfort in buildings in a cost-effective way , . With growing transparency demands in modern architecture, advanced glazing designs and modeling are essential, aligning with 21st-century sustainable development goals.

What factors affect the performance of an insulating glass unit (IGU)?

There are several key elements that impact the performance of an insulating glass unit (IGU). These include the primary seal thickness and width, secondary seal width, the spacer and the desiccant. Updated on August 8, 2023 There are several key elements that impact the performance of an insulating glass unit.

What is insulating glass?

Introduction to Insulating Glass (IGU) Insulating glass units (IGUs) are crucial for improving energy efficiency and comfort in modern buildings. They provide excellent thermal insulation, noise reduction, and prevent condensation. Understanding how insulating glass is made will shed light on its benefits and applications.

What are insulating glass units?

Insulating glass units (IGUs) are building components that show a particular structural behavior. Although such structures have many advantages from the point of view of thermal protection of buildings, they show particular structural behavior under climatic loads.



Inner double glass components



Key Elements of an IGU

There are several key elements that impact the performance of an insulating glass unit. These include the primary seal thickness and width, secondary seal width, the spacer and the desiccant.

[Free Quote](#)

[Structure of IGU: double-glazed unit, b\) triple ...](#)

Download scientific diagram , Structure of IGU: double-glazed unit, b) triple-glazed unit, a) quadruple-glazed unit. A - Component glass pane, B - Gas-filled gap, C - Low-E coating, D - Sealant, E

[Free Quote](#)



[Double Glazed Windows: Components and Benefits](#)

Double glazed windows have become increasingly popular in recent years due to their energy-efficient properties and ability to enhance the comfort and aesthetics of homes ...

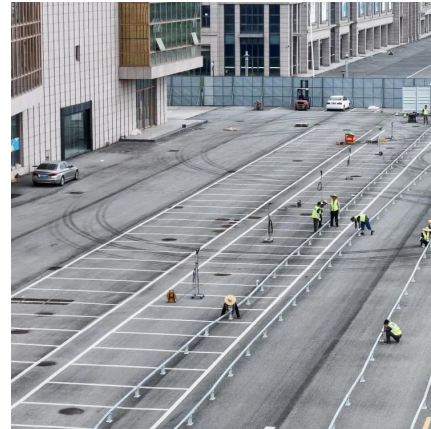
[Free Quote](#)



[Structure of IGU: double-glazed unit, b\) triple-glazed unit, a\)](#)

Download scientific diagram , Structure of IGU: double-glazed unit, b) triple-glazed unit, a) quadruple-glazed unit. A - Component glass pane, B - Gas-filled gap, C - Low-E coating, D - ...

[Free Quote](#)



[Double Glazed Windows: Components and ...](#)

Double glazed windows have become increasingly popular in recent years due to their energy-efficient properties and ability to enhance the comfort and aesthetics of homes and buildings. These windows consist of ...

[Free Quote](#)



[Anatomy of a Double Hung Window](#)

Manufacturing and transporting double hung windows The modern double hung window is a complex, multi-part system. Every aspect of the window experience, from creating a reliable barrier against the ...

[Free Quote](#)



Key Elements of an IGU

There are several key elements that impact the performance of an insulating glass unit. These include the primary seal thickness and width, secondary seal width, the spacer and ...

[Free Quote](#)



Double Glass



Over the years, double glass has become a preferred choice for windows, doors, facades, skylights, and partitions, offering superior performance compared to traditional single-pane ...

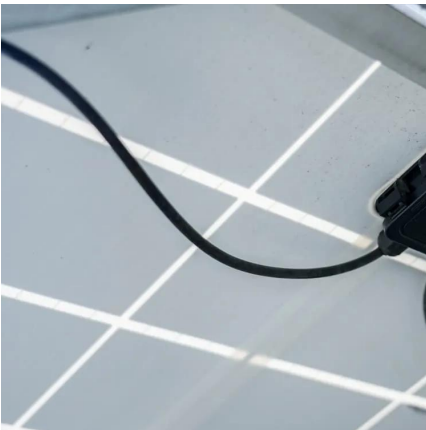
[Free Quote](#)



[Anatomy of a Double Hung Window](#)

Manufacturing and transporting double hung windows The modern double hung window is a complex, multi-part system. Every aspect of the window experience, from creating ...

[Free Quote](#)



[Double glass component entity](#)

Why are spacer bars important in double glazed windows? Spacer bars are a key component in double-glazed windows, directly impacting insulation efficiency. Their main ...

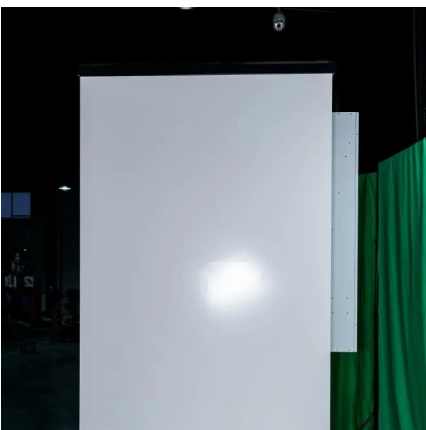
[Free Quote](#)



[Double Glass Units simply supported on two sides: Analytical ...](#)

Insulating Glass Units (IGUs), made of multiple sealed glass panes with gas-filled cavities, are key to thermal and acoustic building insulation. As modern designs demand high ...

[Free Quote](#)



[The Science Behind Double Glazed Glass and Its Insulating ...](#)



The Science Behind Double Glazed Glass and Its Insulating Properties In the world of construction and energy efficiency, double glazed glass stands out as a revolutionary ...

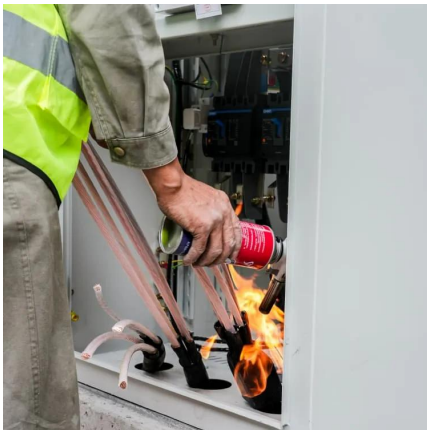
[Free Quote](#)



ionoplast interlayer

Designed with 20,589 wall panels with 7,000 unique shapes, the double skin glass façade is suspended from above on massive cantilevered trusses and stabilised by hoop rings ...

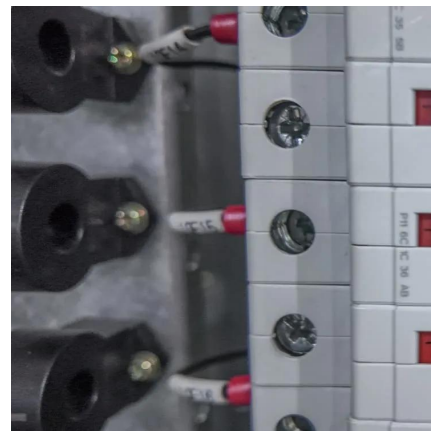
[Free Quote](#)



[How Insulating Glass is Made: A Step-by-Step ...](#)

How Insulating Glass is Made: A Step-by-Step Guide of Double-glazing glass manufacturing process Insulating glass units (IGUs) are crucial for improving energy efficiency and comfort in modern buildings. ...

[Free Quote](#)



[How Insulating Glass is Made: A Step-by-Step Guide of Double ...](#)

How Insulating Glass is Made: A Step-by-Step Guide of Double-glazing glass manufacturing process Insulating glass units (IGUs) are crucial for improving energy efficiency ...

[Free Quote](#)





Contact Us

For catalog requests, pricing, or partnerships, please visit:
<https://www.getonco.co.za>

Scan QR Code for More Information



<https://www.getonco.co.za>