

Night inverter battery





Overview

Do solar inverters work at night?

At night, solar inverters typically do not operate; instead, they enter standby or low-power modes to conserve energy while remaining ready to resume full function when sunlight returns. Some users consider turning off their inverters at night to save energy, as they may consume minimal power in standby mode.

What is night mode on a SolarEdge inverter?

Night Mode is a function on SolarEdge inverters aimed at conserving energy and enhancing system safety. Essentially, it indicates that the rooftop solar array is not generating usable voltage, particularly after sunset. If the inverter shows Night Mode during daylight, it may indicate a connector issue or a need for technician intervention.

How do solar inverters work?

Solar inverters are designed to operate only during daylight, generating electricity through solar panels. They automatically shut down at night and under conditions like clouds or accumulated snow, preserving energy and preventing system overloads.

What happens if a PV inverter turns on in the morning?

In the evening when there are no PV power, the inverter shuts off. In the morning, the inverter turns on if Night mode is enabled, but with Night mode, the inverter turns on in the morning. All inverters draw a very small amount of power while in standby overnight. The inverter's nighttime power consumption values are available in the inverter.



Night inverter battery



[Using PV inverters for voltage support at night can lower ...](#)

Unlike current photovoltaic (PV) inverter controllers, which provide voltage support only during the day, commercially available augmented voltage controllers can provide voltage ...

[Free Quote](#)

[What Happens to Solar Inverters at Night? Do They Shut ...](#)

The nocturnal operation of solar inverters is a critical aspect of solar energy systems that requires careful consideration and optimization. While solar inverters do not shut ...

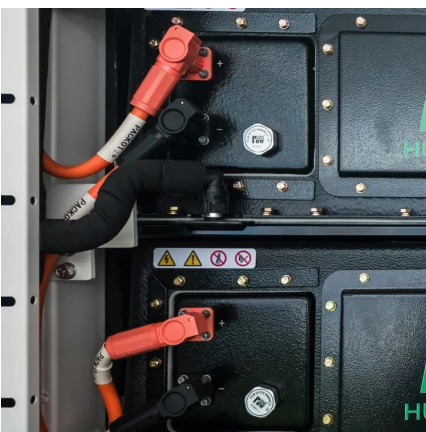
[Free Quote](#)



[Why Do Solar Inverters Have A Night Mode?](#)

Solar inverters do not shut down completely at night, but they typically enter a standby or low-power mode to conserve energy and optimize efficiency. This standby mode ensures the inverter remains operational ...

[Free Quote](#)



[Why Do Solar Inverters Have A Night Mode?](#)

Solar inverters do not shut down completely at night, but they typically enter a standby or low-power mode to conserve energy and optimize efficiency. This standby mode ...

[Free Quote](#)



[Does a Solar Inverter Work at Night? Here's ...](#)

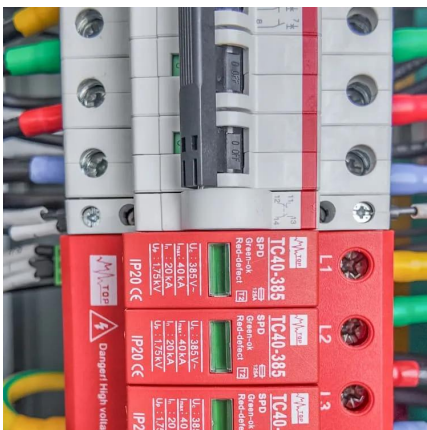
Key Takeaways Solar inverters are crucial for converting DC electricity into usable AC power for your home. A solar inverter doesn't generate electricity at night because it relies on sunlight for its energy ...

[Free Quote](#)

[Why Is My Off Grid Inverter Working Better at Night](#)

Conclusion Your off-grid inverter is the bridge between your renewable energy source and the devices that rely on it. While it may appear to run more efficiently at night due ...

[Free Quote](#)



[What Happens to Solar Inverters at Night? Do ...](#)

The nocturnal operation of solar inverters is a critical aspect of solar energy systems that requires careful consideration and optimization. While solar inverters do not shut down completely at night, they adjust ...

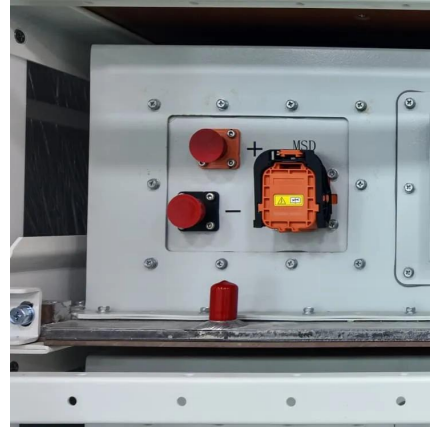
[Free Quote](#)



[How Long Does a Solar Battery Last at Night? Deye ESS](#)

Learn how long you can expect your solar battery to power your home at night, factors affecting its lifespan, and tips for maximizing overnight capacity.

[Free Quote](#)



[Daytime Solar Generation & Nighttime Battery Storage](#)

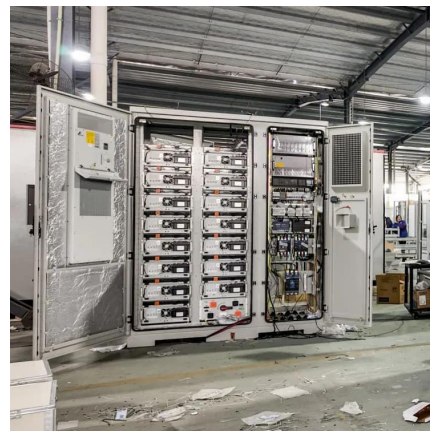
A comprehensive guide to daytime solar generation and nighttime battery storage Table of contents The solar-by-day, batteries-by-night approach The benefits of nighttime battery usage ...

[Free Quote](#)

[Does a Solar Inverter Work at Night? Here's the Real Answer](#)

Key Takeaways Solar inverters are crucial for converting DC electricity into usable AC power for your home. A solar inverter doesn't generate electricity at night because it relies ...

[Free Quote](#)



[Do Off-Grid Solar Inverters Use Power at Night?](#)

Because the inverter remains active, this background consumption gradually reduces your battery charge. That's why deep-cycle batteries are the preferred choice for most ...

[Free Quote](#)



Contact Us

For catalog requests, pricing, or partnerships, please visit:
<https://www.getonco.co.za>

Scan QR Code for More Information



<https://www.getonco.co.za>