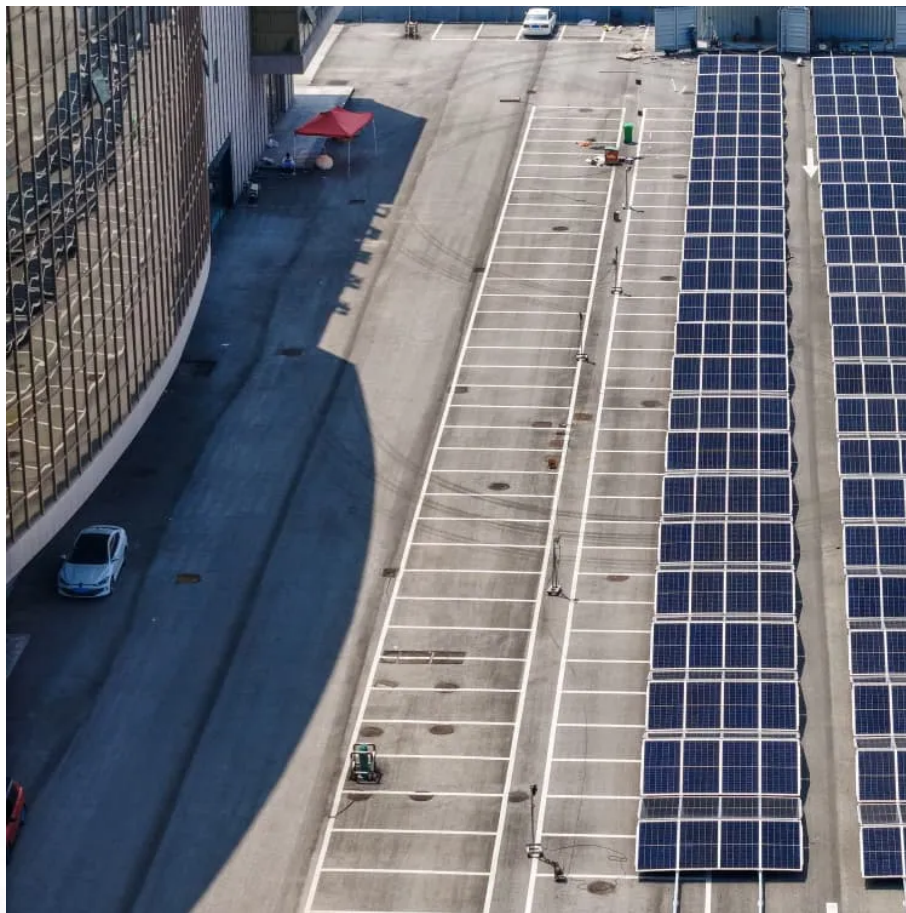


Nine MZ inverter converted to 220V





Overview

1. Normally, use the 2-3A transformers for 20 watts to 30watts for light bulbs. But you want 100 watts, you must use an 8A transformer. It is so expensive for me. 2. The primary coil of a transformer, you may use 9.

What is a 12V to 220V inverter circuit?

Overall, the 12v to 220v inverter circuit using MOSFETs is an excellent way to convert power from one voltage to another. It is easy to assemble and operates efficiently. With its low power loss, compact size, and reliable performance, this inverter circuit is an excellent choice for powering electronic devices in remote locations.

How to convert 12V to 220V inverter circuit using MOSFET?

The 12v to 220v inverter circuit using MOSFET is one of the most popular and reliable methods of converting electricity from one voltage to another. This method makes use of MOSFETs (metal-oxide-semiconductor field-effect transistors) to convert the lower voltage of 12 volts to the higher voltage of 220 volts.

What is a 12V DC to 220V AC converter?

A 12V DC to 220 V AC converter can also be designed using simple transistors. It can be used to power lamps up to 35W but can be made to drive more powerful loads by adding more MOSFETS. The inverter implemented in this circuit is a square wave inverter and works with devices that do not require pure sine wave AC.

What is a DC to AC inverter circuit?

A DC to AC inverter circuit transforms 12V DC input into 220V AC output, enabling you to power standard household devices from battery sources. This comprehensive guide will walk you through the theory, components, design considerations, and step-by-step construction of a reliable 12V to 220V inverter circuit.



Nine MZ inverter converted to 220V



Complete Guide to Building a DC to AC Inverter Circuit: 12V to 220V

A DC to AC inverter circuit transforms 12V DC input into 220V AC output, enabling you to power standard household devices from battery sources. This comprehensive guide will ...

[Free Quote](#)

[12v To 220v Inverter Circuit Using Mosfet](#)

The 12v to 220v inverter circuit using MOSFET is one of the most popular and reliable methods of converting electricity from one voltage to another. This method makes use ...

[Free Quote](#)



[Push-Pull Inverter 12V to 220V](#)

In this project, we design and construct a 12V to 220V push-pull inverter. This circuit is specifically designed to convert 12V DC into 220V DC, making it suitable for powering devices with AC input that internally use a bridge ...

[Free Quote](#)



[How does a 12V to 220V Inverter Work?](#)

Summarize: by the inverter bridge, logic control, filter circuit composed of three major components of the inverter, through the lc oscillation circuit and other means of transmitting dc power boosting ...



[Free Quote](#)



[Push-Pull Inverter 12V to 220V](#)

In this project, we design and construct a 12V to 220V push-pull inverter. This circuit is specifically designed to convert 12V DC into 220V DC, making it suitable for powering devices with AC ...

[Free Quote](#)



[Complete Guide to Building a DC to AC ...](#)

A DC to AC inverter circuit transforms 12V DC input into 220V AC output, enabling you to power standard household devices from battery sources. This comprehensive guide will walk you through the theory, ...

[Free Quote](#)



[Simple Inverters 12V to 220V. comparision. testing. and real_](#)

Two of the simplest ways to make a 12V to 220V inverter, one with transistors and the other with Mosfets, and whether it is reasonable to make them.

[Free Quote](#)





[Multilevel Inverter Based on a Dual Two-Level Nine-Switch ...](#)

The nine-switch inverter is considered as a very interesting solution for three-phase dual output applications, such as dual three-phase or six-phase motor drive systems. ...

[Free Quote](#)



[12v To 220v Inverter Circuit Using Mosfet](#)

The 12v to 220v inverter circuit using MOSFET is one of the most popular and reliable methods of converting electricity from one voltage to another. This method makes use of MOSFETs (metal-oxide ...

[Free Quote](#)

[How does a 12V to 220V Inverter Work?](#)

Summarize: by the inverter bridge, logic control, filter circuit composed of three major components of the inverter, through the Ic oscillation circuit and other means of ...

[Free Quote](#)



Contact Us

For catalog requests, pricing, or partnerships, please visit:
<https://www.getonco.co.za>



Scan QR Code for More Information



<https://www.getonco.co.za>