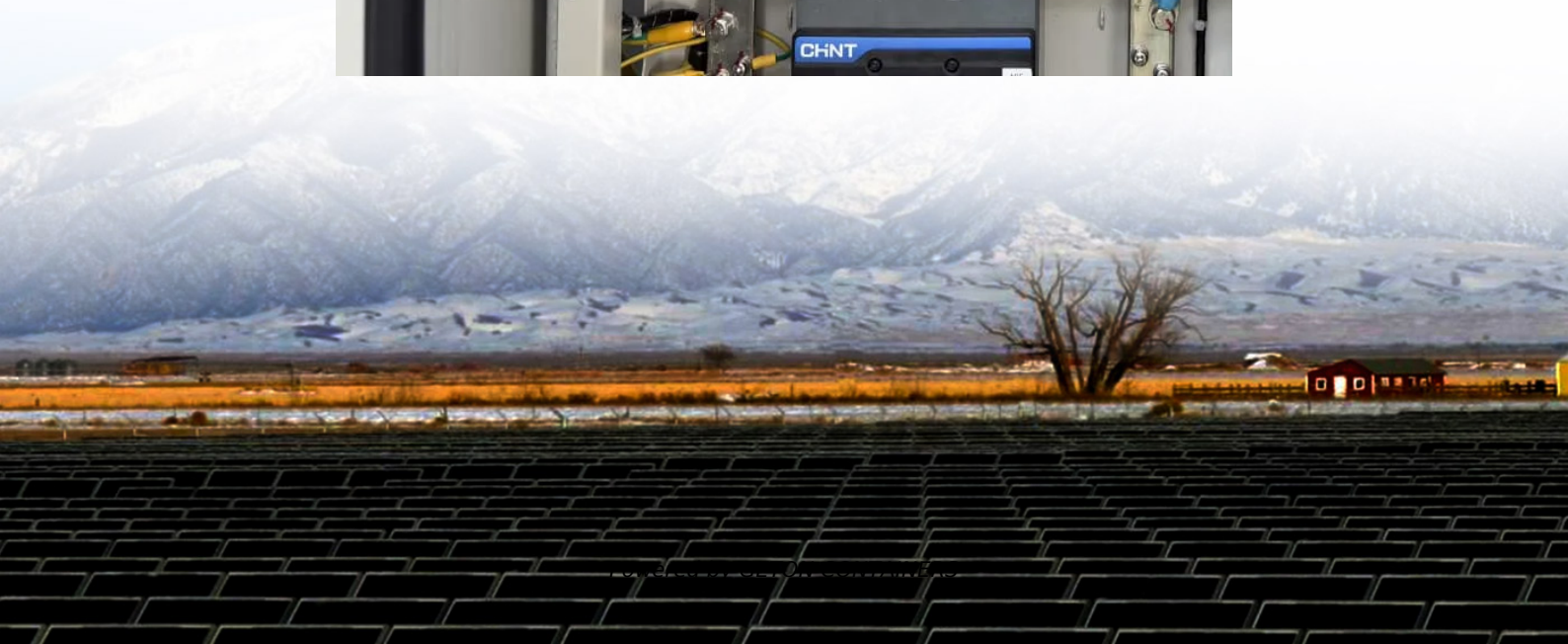


Operator base station communication process





Overview

What is a base station in a telecommunications network?

A base station is a critical component in a telecommunications network. A fixed transceiver that acts as the central communication hub for one or more wireless mobile client devices. In the context of cellular networks, it facilitates wireless communication between mobile devices and the core network.

How does a base station work?

Backhaul Connection: Base stations are connected to the core network via backhaul links, which can be wired or wireless. The backhaul provides the necessary bandwidth and reliability for transferring large amounts of data between the base station and the network core.

Why are base stations important?

Base stations are the backbone of modern telecommunications networks, providing the essential infrastructure for wireless communication. They enable mobile devices to connect to the network, manage traffic efficiently, and ensure robust and reliable connectivity across wide areas.

How do base stations manage network traffic?

Traffic Handling: Base stations manage network traffic by controlling the hand-off process when a mobile device moves from one cell to another. This ensures that calls and data sessions are not dropped during transitions.
Backhaul Connection: Base stations are connected to the core network via backhaul links, which can be wired or wireless.



Operator base station communication process



[Exploring communication base stations](#)

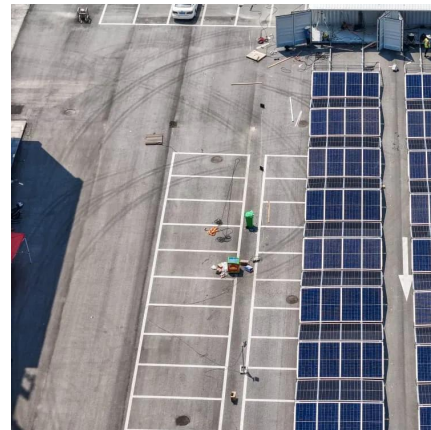
The specific working principles of different types of base stations, such as 2G, 3G, 4G, and 5G base stations, may vary depending on the communication technology standards used, but overall they all ...

[Free Quote](#)

[How do operator base stations communicate](#)

What does a base station do? Base stations are responsible for transmitting and receiving data to and from wireless devices, as well as managing network resources and ...

[Free Quote](#)



[What Is a Telecom Base Station and How Does It Work?](#)

A base station (BS)--short for Base Transceiver Station--is a core component of a mobile communication network. It serves as the interface between mobile devices and the operator's ...

[Free Quote](#)

Optimization Control Strategy for Base Stations Based on Communication

On the basis of ensuring smooth user communication and normal operation of base stations, it realizes orderly regulation of energy



storage for large-scale base stations, ...

[Free Quote](#)



[What is a Base Station? -- From Communication Core to ...](#)

Base stations are the core of mobile communication, and with the rise of 5G, thermal and energy challenges are increasing. This article explains the definition, structure, ...

[Free Quote](#)

[Optimizing redeployment of communication base station](#)

Most of the current research is based on the performance of the base station (BS) itself or the operation mode of the communication operator without considering the users' ...

[Free Quote](#)



[What is a Base Station in ...](#)

What is a Base Station? A base station is a critical component in a telecommunications network. A fixed transceiver that acts as the central communication hub for one or more wireless mobile client devices. In the ...

[Free Quote](#)



[Risk Communication Guide for Mobile Phones and Base ...](#)

Communication about the location of base station antennas or use of mobile phones is sometimes characterised by high levels of concern about the subject and very little ...

[Free Quote](#)



[Inter-Operator Base Station Coordination in](#)

To obtain consistent rate gains from spectrum sharing in a wide variety of cellular network environments, directional beamforming may not be sufficient for interference ...

[Free Quote](#)

Contact Us

For catalog requests, pricing, or partnerships, please visit:
<https://www.getonco.co.za>

Scan QR Code for More Information



<https://www.getonco.co.za>