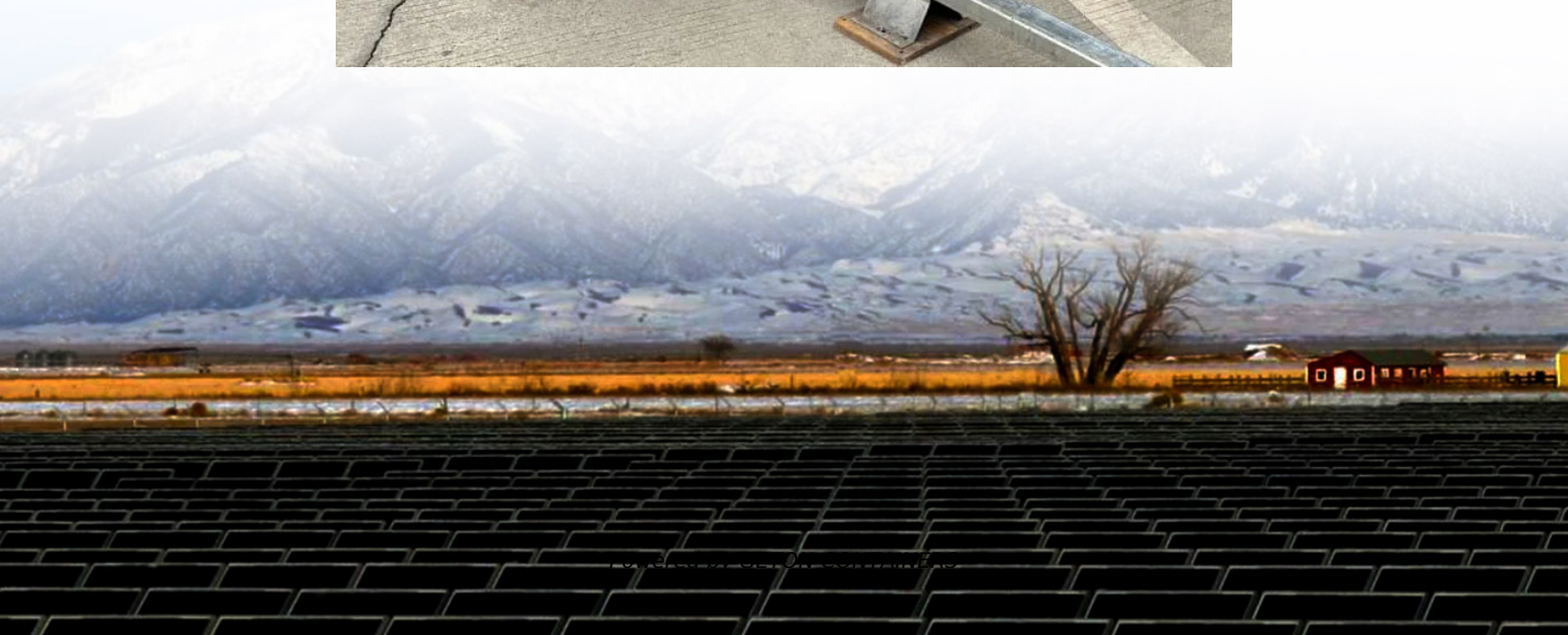


# Outdoor power box protection level





## Overview

---

Do outdoor electrical systems need IP rated enclosures?

Absolutely. To meet safety codes and prevent hazards, all outdoor electrical systems should use IP-rated enclosures — usually IP65 or higher. Understand IP ratings and learn how to choose the right weatherproof junction box for safe, durable electrical installations in any environment.

What are the most common IP ratings for outdoor equipment enclosures?

The following are the most common IP ratings for outdoor equipment enclosures. Equipment that has been designed hardened for outdoor use will perform well in an enclosure rated to IP54. It will give a good level of protection from airborne dust and splashing rain. IP54 allows some ingress of water, subjectively defined as 'limited'.

What are the requirements for a weatherproof junction box?

Weatherproof junction boxes must meet both international and local standards: IEC/EN 60529: Defines the IP system globally. UL/CE certification: Proves third-party testing and compliance. Building & electrical codes: Regional requirements that specify minimum IP levels.

What is a good IP rating for outdoor lighting?

Here are the most common ratings you'll see: IP44 → Basic splash protection; fine for sheltered outdoor areas but not heavy rain. IP55 → Blocks some dust and resists water jets; often used for outdoor sockets and fixtures. IP65 → Fully dust-tight, withstands low-pressure water jets; great for garden lighting, outdoor CCTV, or building facades.



## Outdoor power box protection level

---



### IP65 Distribution Box

SMICO's IP65 protection rating is one of the common protection rating standards for outdoor plastic distribution boxes. IP represents the international protection level (Ingress Protection), 65 means dustproof ...

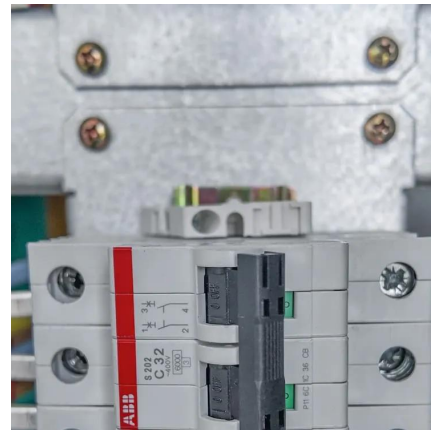
[Free Quote](#)



### [IP ratings for outside connections](#)

The team at WISKA provide an explanation on the most common IP ratings for outside connections and offer two ideal solutions for enclosure protection against the elements. ...

[Free Quote](#)



### IP Ratings Explained: How to Choose the Right Weatherproof Junction Box

Understand IP ratings and learn how to choose the right weatherproof junction box for safe, durable electrical installations in any environment.

[Free Quote](#)

### [IP68 Junction Box Buyer's Guide , Waterproof ...](#)

Learn why IP68 junction boxes are the best choice for outdoor wiring. Discover waterproof protection, cable compatibility, and installation tips to ensure safe, long-lasting electrical connections.





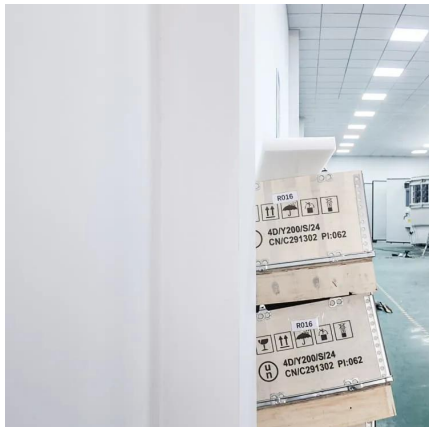
[Free Quote](#)



### **A simple guide to IP ratings and environmental protection in outdoor**

A practical guide to what IP ratings really mean on-site and how to choose the proper protection for outdoor power setups in rain, dust and harsh environments.

[Free Quote](#)



### **[A GUIDE TO INGRESS PROTECTION RATINGS FOR](#)**

[...](#)

An IP rating (also known as Ingress Protection Rating) indicates how well a device is protected against solids and liquids. Sometimes called the International Protection rating, it ...

[Free Quote](#)



### **[What is the minimum protection level for outdoor](#)**

[...](#)

According to JGJ 242-2011 Residential Building Electrical Design Code 6.2.5, it is stipulated that the protection level of outdoor power supply inlet box is not lower than IP54. The protection ...

[Free Quote](#)





## IP68 Junction Box Buyer's Guide , Waterproof Outdoor Electrical Protection

Learn why IP68 junction boxes are the best choice for outdoor wiring. Discover waterproof protection, cable compatibility, and installation tips to ensure safe, long-lasting electrical ...

[Free Quote](#)



### [Can Junction Boxes Be Used Outdoors](#)

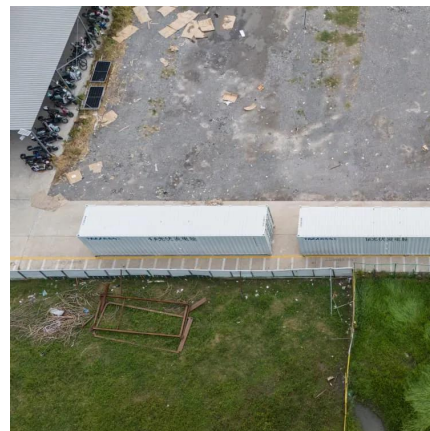
1. Protection Level Requirement Outdoor junction boxes must have a high enough ingress protection rating--commonly referred to as IP rating--to resist rain, dust, and other external factors. For most outdoor ...

[Free Quote](#)

### [Can Junction Boxes Be Used Outdoors](#)

1. Protection Level Requirement Outdoor junction boxes must have a high enough ingress protection rating--commonly referred to as IP rating--to resist rain, dust, and other ...

[Free Quote](#)



### [Outdoor Electrical Box with Breakers: Circuit Protection](#)

If you're planning an outdoor electrical installation--whether for solar arrays, pool equipment, or landscape lighting--understanding outdoor electrical box with breakers is ...

[Free Quote](#)



## IP65 Distribution Box

SMICO's IP65 protection rating is one of the common protection rating standards for outdoor plastic distribution boxes. IP represents the international protection level (Ingress Protection), ...

[Free Quote](#)



## Outdoor Socket Boxes: Materials, IP Ratings, Installation Tips, ...

Discover everything about outdoor socket boxes, including materials, waterproof IP ratings, installation tips, and best practices for safe, reliable, and durable outdoor electrical ...

[Free Quote](#)

## Contact Us

---

For catalog requests, pricing, or partnerships, please visit:  
<https://www.getonco.co.za>

**Scan QR Code for More Information**



<https://www.getonco.co.za>