

# **Power consumption of 5G and 4G base stations**





## Overview

---

Why do we need a 5G base station?

The limited penetration capability of millimeter waves necessitates the deployment of significantly more 5G base stations (the next generation Node B, gNB) than their 4G counterparts to ensure network coverage . Notably, the power consumption of a gNB is very high, up to 3–4 times of the power consumption of a 4G base stations (BSs).

Is 5G base station power consumption accurate?

esan@huawei.comAbstract—The energy consumption of the fifth generation (5G) of mobile networks is one of the major concerns of the telecom industry. However, there is not currently an accurate and tractable approach to evaluate 5G base stations (BSs) power consumption. In this article, we pr.

Can machine learning predict energy consumption for 5g/4g radio base stations?

To further develop energy modelling methodology and attempt to answer the questions presented in the previous section, different machine learning algorithm's ability to predict energy consumption is investigated for 5G/4G radio base stations.

Should power consumption models be used in 5G networks?

This restricts the potential use of the power models, as their validity and accuracy remain unclear. Future work includes the further development of the power consumption models to form a unified evaluation framework that enables the quantification and optimization of energy consumption and energy efficiency of 5G networks.



## Power consumption of 5G and 4G base stations



### [What is the Power Consumption of a 5G Base Station?](#)

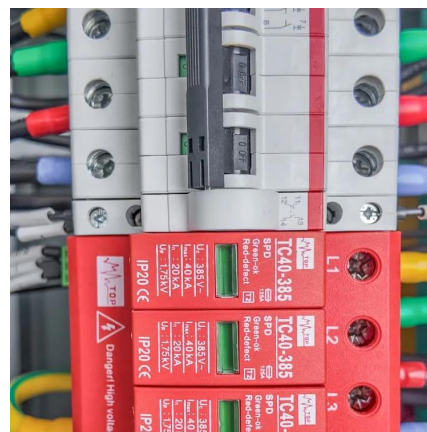
Why is 5G Power Consumption Higher? 1. Increased Data Processing and Complexity These 5G base stations consume about three times the power of the 4G stations. ...

### [Free Quote](#)

### [Power consumption based on 5G communication](#)

At present, 5G mobile traffic base stations in energy consumption accounted for 60% ~ 80%, compared with 4G energy consumption increased three times. In the future, high ...

### [Free Quote](#)



### [Why does 5g base station consume so much power and how ...](#)

Huawei and ZTE's 5G base stations have a 100% load power consumption of 3852.5W and 3674.85W, respectively, while ZTE's 4G base station has a power consumption ...

### [Free Quote](#)

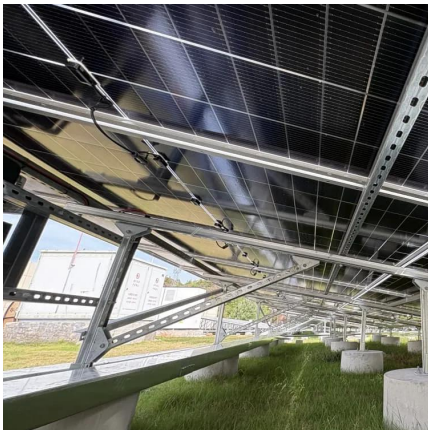


### **Modeling and aggregated control of large-scale 5G base stations ...**

Notably, the power consumption of a gNB is very high, up to 3-4 times of the power consumption of a 4G base stations (BSs). The substantial quantity, rapid growth rate, and high ...



[Free Quote](#)



[Modelling the 5G Energy Consumption Using Real-world ...](#)

Accurate energy consumption modeling is essential for developing energy-efficient strategies, enabling operators to optimize resource utilization while maintaining network ...

[Free Quote](#)



[Machine Learning and Analytical Power Consumption ...](#)



[Base Station Energy Use in Dense Urban and Suburban ...](#)

In this article, the energy consumption of base transceiver stations (BTS) is estimated for different RATs, 3G, 4G and 5G. These estimates are important to understand the actual energy ...

[Free Quote](#)



**Comparison of Power Consumption Models for 5G Cellular Network Base**

This paper conducts a literature survey of relevant power consumption models for 5G cellular network base stations and provides a comparison of the models. It highlights ...

[Free Quote](#)





Abstract--The energy consumption of the fifth generation (5G) of mobile networks is one of the major concerns of the telecom industry. However, there is not currently an ...

[Free Quote](#)



[Why does 5g base station consume so much ...](#)

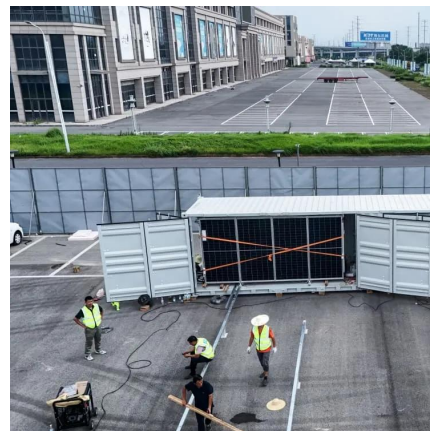
Huawei and ZTE's 5G base stations have a 100% load power consumption of 3852.5W and 3674.85W, respectively, while ZTE's 4G base station has a power consumption of only 1044.72W under 100% load, ...

[Free Quote](#)

[Energy Consumption Modelling for 5G Radio Base ...](#)

To further develop energy modelling methodology and attempt to answer the questions presented in the previous section, different machine learning algorithm's ability to predict energy ...

[Free Quote](#)



[Power Consumption Modeling of 5G Multi-Carrier Base Stations...](#)

The fifth generation of the Radio Access Network (RAN) has brought new services, technologies, and paradigms with the corresponding societal benefits. However, the ...

[Free Quote](#)



## Contact Us

---

For catalog requests, pricing, or partnerships, please visit:  
<https://www.getonco.co.za>

### Scan QR Code for More Information



<https://www.getonco.co.za>