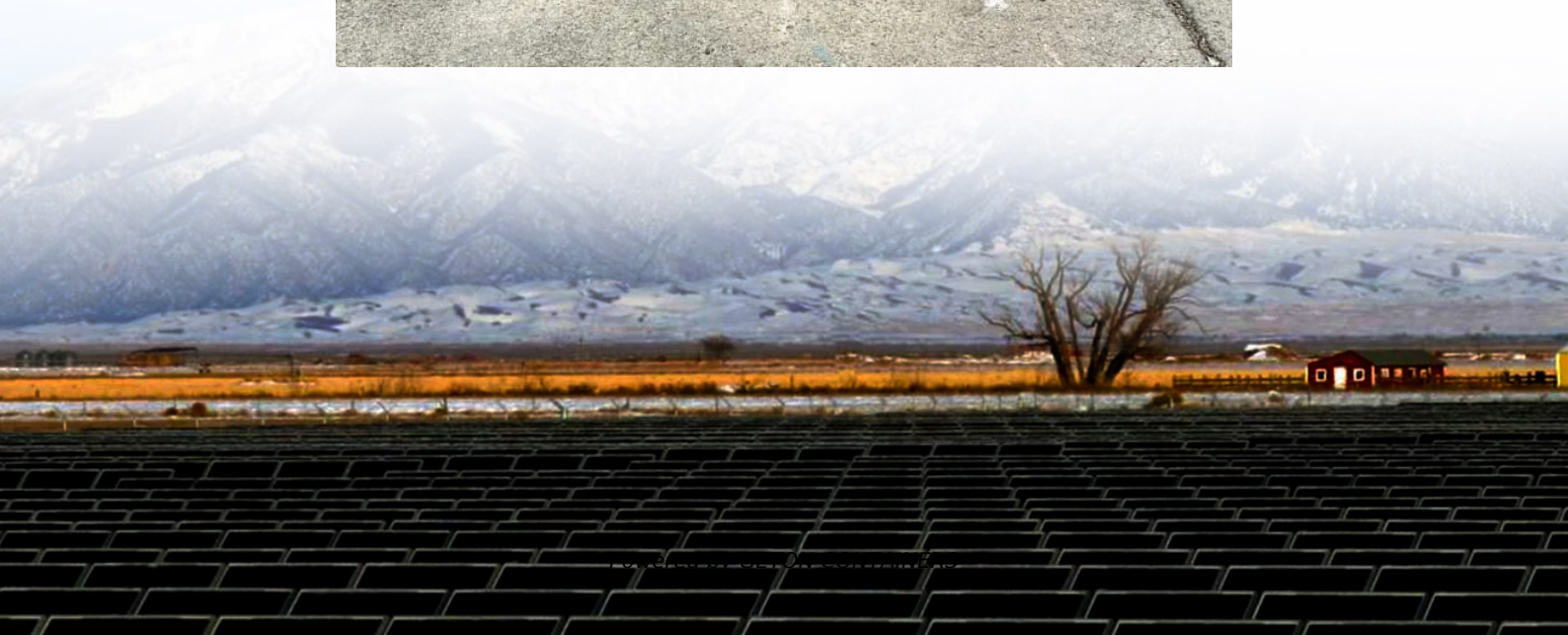


# **Power station generator set composition**





## Overview

---

What components make up a generator set?

The various components that make up the generator set will be described below. Common generator sets in Australia generally use gasoline, diesel or liquefied petroleum gas, and there are also some steam engines, and biodiesel engines are also expected to be popular in the future.

What is the rated power of a generator set?

The rated power of the generator set is the apparent power, which is usually based on the output under the condition that the power factor is 0.8. The power factor of 0.8 is the power factor of general loads in most occasions, but in fact there are many loads whose power factor is not 0.8.

What kind of engine does a generator use in Australia?

Common generator sets in Australia generally use gasoline, diesel or liquefied petroleum gas, and there are also some steam engines, and biodiesel engines are also expected to be popular in the future. The prime mover rotates the generator to generate electricity, therefore, the prime mover must meet the alternator's rated power.

How do you charge a generator genset?

(3) Batteries. If the prime mover is started by the starter motor, the genset should also include a starter battery. The starting battery or battery pack (static voltage 24V) is usually installed on the base of the generator set. The battery can be charged either directly by the AC motor or via a battery charger powered by the generator set output.



## Power station generator set composition

---



### [In-depth explanation of the components of ...](#)

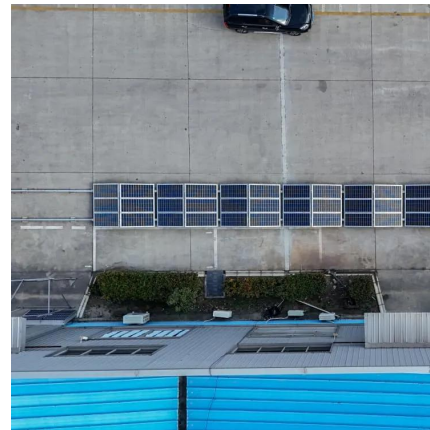
Most of the backup generator sets in the independent power supply system are single-phase, and three-phase generators are only required in large power stations that drive certain equipment.

### [Free Quote](#)

### [Comprehensive Analysis of Generator Set Structure](#)

Diesel Generator Set: Has a highly integrated control system, commonly used for emergency power and mobile power stations. Wind Turbine Generator: Utilizes a permanent ...

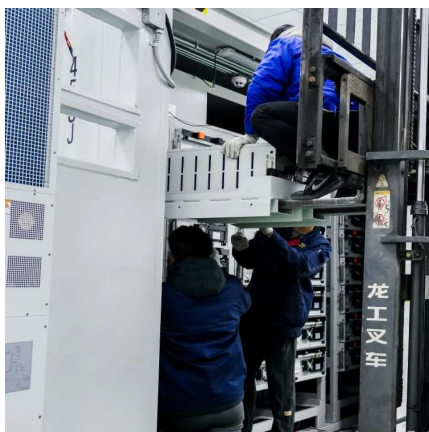
### [Free Quote](#)



### [Power station generator set composition](#)

A generator set (also known as a genset) is used to generate electricity and usually contains the following components: Diesel or gaseous engine. Alternator (turns the mechanical power into ...

### [Free Quote](#)

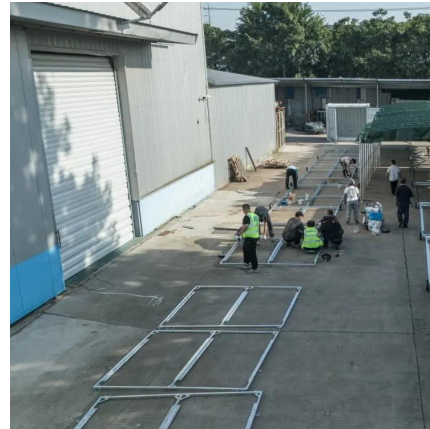


### [Composition and Model Meaning of Diesel Generator Set](#)

Diesel generator sets are widely used power generation equipment in the world, which can provide safe, stable, and reliable power protection for mechanical engineering, ...



[Free Quote](#)



### [Composition and Model Meaning of Diesel ...](#)

Diesel generator sets are widely used power generation equipment in the world, which can provide safe, stable, and reliable power protection for mechanical engineering, chemical mines, factories, hotels, ...

[Free Quote](#)



## **What are the main components of a generator set? - NPC POWER GENERATOR**

The diesel generator set is mainly composed of the following four core systems, which are explained below based on the functions and reference sources of each component: ...

[Free Quote](#)



### [Diesel Generator Composition](#)

Diesel generator sets mainly consist of a diesel engine, generator, control system, and other auxiliary systems. The diesel engine serves as the power source of the generator ...

[Free Quote](#)

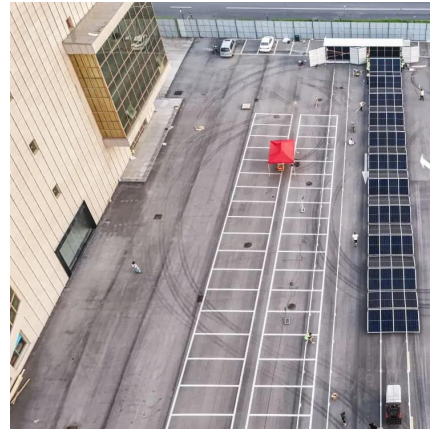




## Components of a Generator Set

A generator set, also known as a genset, is a self-contained power generation system that converts mechanical energy into electrical energy. It consists of several key components working in harmony to ensure reliable ...

[Free Quote](#)



## **Understanding the Key Components of an Industrial Diesel Generator Set**

An industrial diesel generator set serves as the backbone of reliable power generation in manufacturing facilities, data centers, hospitals, and numerous other critical ...

[Free Quote](#)

## Diesel Generator Composition

Diesel generator sets mainly consist of a diesel engine, generator, control system, and other auxiliary systems. The diesel engine serves as the power source of the generator set and is composed of ...

[Free Quote](#)



## What is the composition of a generator set?

A generator set is a complete set of mechanical equipment that converts other forms of energy into electrical energy. Its composition is complex and precise, mainly including the following ...

[Free Quote](#)



## Components of a Generator Set

A generator set, also known as a genset, is a self-contained power generation system that converts mechanical energy into electrical energy. It consists of several key components ...

[Free Quote](#)



## In-depth explanation of the components of the generator set

Most of the backup generator sets in the independent power supply system are single-phase, and three-phase generators are only required in large power stations that drive ...

[Free Quote](#)

## Composition of diesel generator set-Longhong ...

A diesel generator set is a power generation equipment that uses diesel as the primary fuel. It employs a diesel engine as the prime mover to drive the generator, converting ...

[Free Quote](#)



## Contact Us

---

For catalog requests, pricing, or partnerships, please visit:  
<https://www.getonco.co.za>



## Scan QR Code for More Information



<https://www.getonco.co.za>