

# **Procurement of a 100kW folding container for a wastewater treatment plant**





## Overview

---

What is a containerized wastewater treatment plant?

A containerized wastewater treatment plant is a wastewater treatment system that is fully integrated into a container. For uncomplicated and fast transportation, we use 10, 20 and 40-foot shipping containers in accordance with the international ISO standard for our KLARO container systems.

What is a packaged sewage treatment plant?

For small scale commercial wastewater treatment applications, we preinstall all treatment modules (processes) inside a single container. The complete treatment process including primary settlement, secondary treatment and clarification happens within the container. This type of packaged plant is ideal for temporary and mobile sewage treatment.

How many m3 of wastewater can a containerized wastewater treatment plant handle?

We have experience with containerized wastewater treatment plants for up to 1,380 PE or 207 m3 of wastewater per day. A wastewater treatment plant is only as effective and efficient as the installed system.

What is a water treatment plant in container?

A water treatment plant in container is a complete solution, assembled and tested off-site at our factory. The solution is complete with all internal piping and wiring factory-built. This makes the plant ready for use when supplied, which financially can be an advantage, also in relation to the reduced amount of time used for deployment.



## Procurement of a 100kW folding container for a wastewater treatment

---



### [ClearFox® Containerized Systems](#)

The ClearFox® Containerized System is a packaged wastewater treatment plant, custom designed and pre-installed within ISO shipping containers. As a modular solution, it is easily transportable by land or sea, with minimal ...

[Free Quote](#)

### [Intelligent containerised waste water treatment plant](#)

TLS supplies intelligent mobile and containerised waste water treatment plant or sewage treatment plant container, which can be remotely controlled to monitor system ...

[Free Quote](#)



### [Aspiral\(TM\) Flex Building-Blocks , Wastewater Treatment , Fluece](#)

Aspiral(TM) Flex: Modular, customizable wastewater treatment solutions that deliver high-quality effluent, reduce costs, and ensure fast delivery.

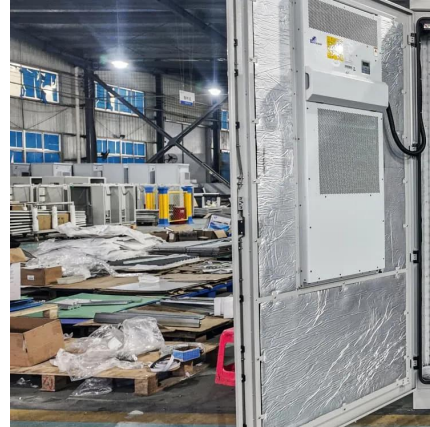
[Free Quote](#)

### [Mobile wastewater treatment plants in containers](#)

A containerized wastewater treatment plant is a wastewater treatment system that is fully integrated into a container. For uncomplicated and fast transportation, we use 10, 20 and 40 ...



[Free Quote](#)



### [Containerized Wastewater Treatment Plant](#)

How do Containerized STPs Treat Wastewater?  
For small scale commercial wastewater treatment applications, we preinstall all treatment modules (processes) inside a single container. The complete treatment process ...

[Free Quote](#)



### [Water Treatment Plant containerization](#)

Containerization of a water treatment plant does not only include the supply of a container, it includes the complete installation of the plant: Connected piping between equipment pumps, ...

[Free Quote](#)



### [Containerized Wastewater Treatment Plant](#)

How do Containerized STPs Treat Wastewater?  
For small scale commercial wastewater treatment applications, we preinstall all treatment modules (processes) inside a single ...

[Free Quote](#)







## ClearFox® Containerized Systems

The ClearFox® Containerized System is a packaged wastewater treatment plant, custom designed and pre-installed within ISO shipping containers. As a modular solution, it is easily ...

[Free Quote](#)



## Containerized Wastewater Treatment Systems ...

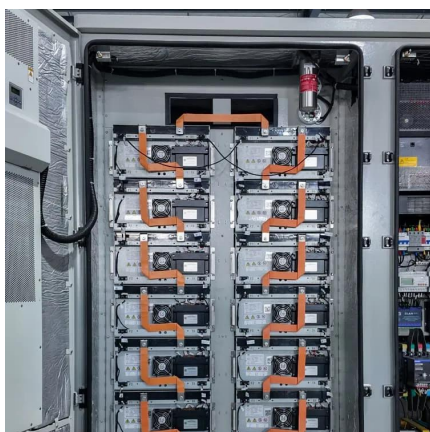
Containerized Wastewater Treatment Systems  
Traditional wastewater treatment plants require ample space and extensive outdoor facilities. These requirements make them unsuitable for many situations, ...

[Free Quote](#)

## Intelligent containerised waste water ...

TLS supplies intelligent mobile and containerised waste water treatment plant or sewage treatment plant container, which can be remotely controlled to monitor system condition and water quality.

[Free Quote](#)



## Containerized Wastewater Treatment Systems , Full System

Containerized Wastewater Treatment Systems  
Traditional wastewater treatment plants require ample space and extensive outdoor facilities. These requirements make them ...

[Free Quote](#)



## Contact Us

---

For catalog requests, pricing, or partnerships, please visit:  
<https://www.getonco.co.za>

### Scan QR Code for More Information



<https://www.getonco.co.za>