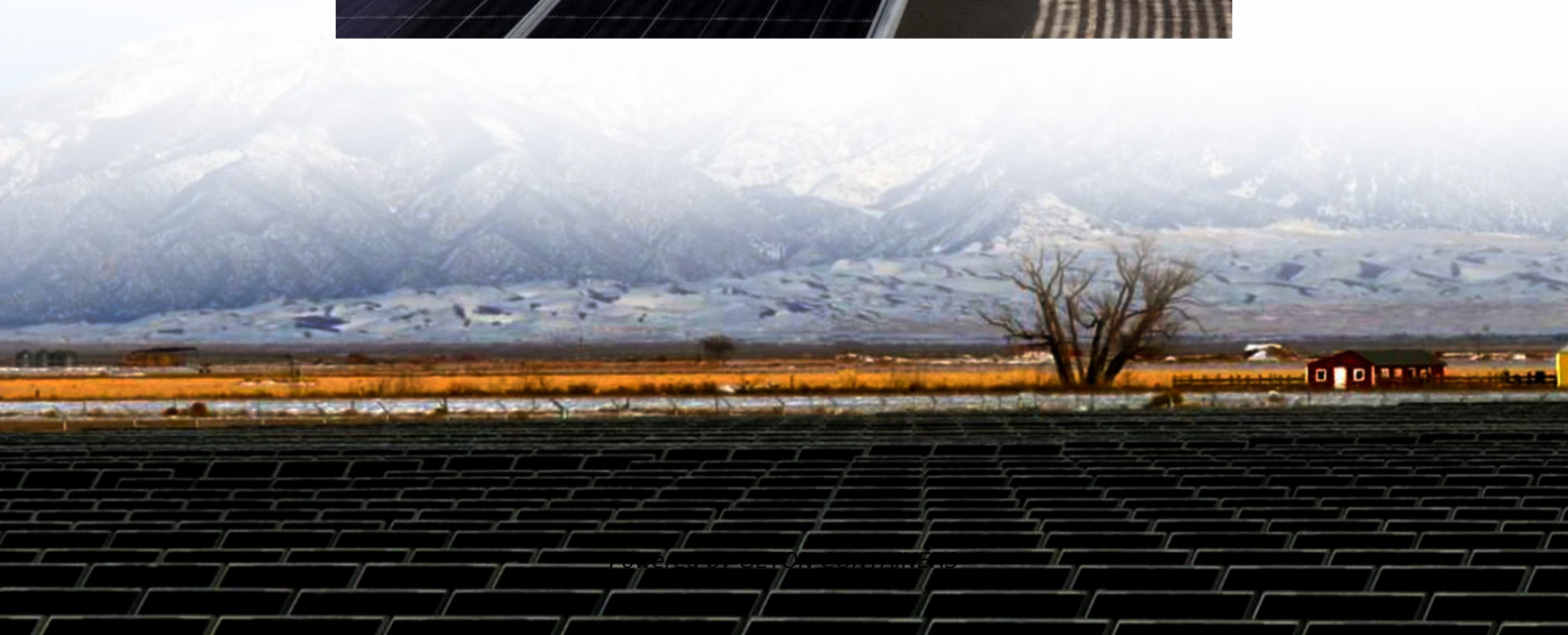


Rated power of the inverter





Overview

What is inverter kVA rating?

Inverter kVA rating measures the apparent power that an inverter can handle, expressed in kilovolt-amperes (kVA). It indicates the total capacity of electrical power that can be delivered by the inverter, including the power used effectively (apparent power or kW) and the power lost or not used directly (reactive power).

What is rated output power of inverter?

The rated output power of inverter is the continuous output power, which refers to the output power of the inverter under the rated voltage current. It is the power that can be continuously and stably output for a long time.

What do kW and kVA mean in inverter specifications?

kW refers to the real or usable power output of an inverter. kVA represents the total power capacity it can carry, including power lost in phase difference (reactive power). For example, an inverter rated at 10 kVA with a power factor of 0.8 can only deliver 8 kW of real power.

What is a good power factor for an inverter?

For example, an inverter rated at 10 kVA with a power factor of 0.8 can only deliver 8 kW of real power. That means if your total appliance load is 10 kW, this inverter will not be enough. Why is power factor important when choosing an inverter?

Most hybrid and solar inverters operate at a power factor between 0.8 and 1.0.



Rated power of the inverter



[Understanding Inverter Rated Power: A Complete Guide for ...](#)

Conclusion Inverter rated power is a fundamental factor in designing an efficient and reliable power system. By understanding your power requirements, accounting for surge ...

[Free Quote](#)

[Inverter Specifications and Data Sheet](#)

The article provides an overview of inverter functions, key specifications, and common features found in inverter systems, along with an example of power calculations and inverter classification by power output. ...

[Free Quote](#)



[Inverter Power Mysteries: Why 90% Get Peak vs Rated Wrong](#)

Discover the details of Inverter Power Mysteries: Why 90% Get Peak vs Rated Wrong at Shenzhen ShengShi TianHe Electronic Technology Co., Ltd., a leading supplier in ...

[Free Quote](#)



[What is the Inverter kVA Rating, and the Top 5 Mistakes to ...](#)

In this article, you will get in-depth information about the kVA rating inverter, its application, the difference between KVA vs KW, the top 5 mistakes to avoid when selecting, ...



[Free Quote](#)



[What size inverter do I need?](#)

To properly size the inverter, the user must identify the single appliance with the highest startup surge and ensure the inverter's peak power rating exceeds this value. Additionally, they must ...

[Free Quote](#)



[Inverter Peak Power vs Rated Power: What it ...](#)

The rated power is the power at which the inverter is stabilized over a long period, whereas the peak power is only used for short periods of high power demand. Learn More: How does an inverter work? What ...

[Free Quote](#)



[What is the Inverter kVA Rating, and the Top ...](#)

In this article, you will get in-depth information about the kVA rating inverter, its application, the difference between KVA vs KW, the top 5 mistakes to avoid when selecting, and how to calculate the right kVA ...

[Free Quote](#)





[Understanding Inverter Power Ratings: kW vs kVA Explained](#)

For example, an inverter rated at 10 kVA with a power factor of 0.8 can only deliver 8 kW of real power. That means if your total appliance load is 10 kW, this inverter will not be ...

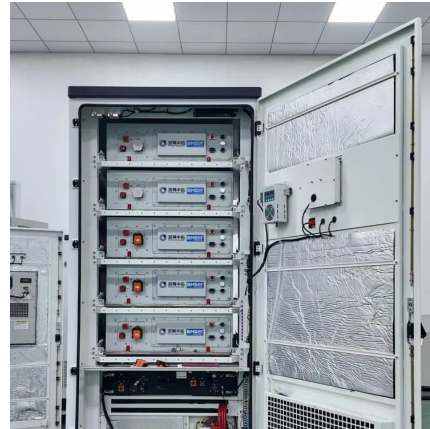
[Free Quote](#)



[What is the difference between rated power ...](#)

The rated output power of inverter is the continuous output power, which refers to the output power of the inverter under the rated voltage current. It is the power that can be continuously and stably output ...

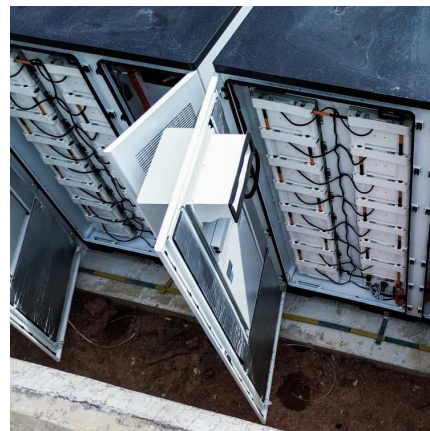
[Free Quote](#)



[PV-AC-DC , Electricity , 2024b , ATB , NLR](#)

For a PV system, the rated capacity in the denominator is either reported in terms of the aggregated capacity of (1) all its modules or (2) all its inverters. PV modules are rated using ...

[Free Quote](#)



[Inverter Specifications and Data Sheet](#)

The article provides an overview of inverter functions, key specifications, and common features found in inverter systems, along with an example of power calculations and inverter ...

[Free Quote](#)



What is the difference between rated power and peak power of inverter?

The rated output power of inverter is the continuous output power, which refers to the output power of the inverter under the rated voltage current. It is the power that can be ...

[Free Quote](#)



Understanding Inverter Power Ratings: kW vs ...

For example, an inverter rated at 10 kVA with a power factor of 0.8 can only deliver 8 kW of real power. That means if your total appliance load is 10 kW, this inverter will not be enough.

[Free Quote](#)

Inverter Peak Power vs Rated Power: What it is and Why It ...

The rated power is the power at which the inverter is stabilized over a long period, whereas the peak power is only used for short periods of high power demand. Learn More: ...

[Free Quote](#)



Contact Us

For catalog requests, pricing, or partnerships, please visit:
<https://www.getonco.co.za>



Scan QR Code for More Information



<https://www.getonco.co.za>