

Solar glass cold





Overview

What is Solarcool® glass?

Solarcool® glass is a family of reflective coated glass that has been enhancing building appearances and providing comfort to millions since 1972. It can be glazed with the reflective coating positioned on either the first or second surface.

Which glass is best suited to windows in cold weather?

Glass with high solar gain is best suited to windows in cold climates. By contrast, low solar gain, or spectrally selective, low-E glazings are more beneficial for buildings and homes in warm climates. These products reduce heat loss in cold weather, yet also reduce heat gain in hot weather.

What is solar glass?

In essence, solar glass is the combination of solar technology and standard window glass. Most of these windows don't look any different from their more traditional counterparts; they're just as clear and usually allow the same amount of light in.

What is solar-optimized glass used for?

Solar-optimized glass is practical for windows, doors, and skylights. Commercially, it is used for the top surfaces of thermal collectors and photovoltaic modules. Solar glass is almost always colorless, but in most cases it can be patterned for optimal solar energy transmission.



Solar glass cold



[What climate conditions can AR Solar Coating Glass withstand?](#)

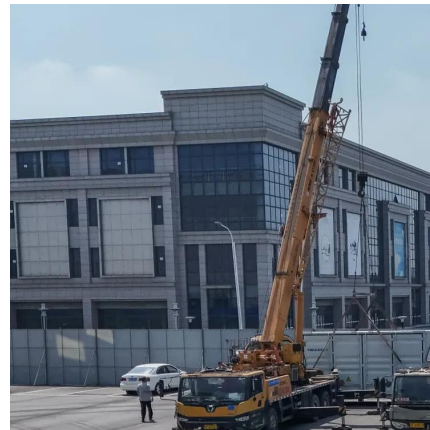
In cold regions, low temperatures may cause increased internal stress in the material, causing cracking or performance degradation. AR Solar Coating Glass ensures its excellent ...

[Free Quote](#)

[Big Chinese Solar Glass Makers Confirm Output Cuts Amid ...](#)

Flat Glass is able to make 23,000 tons of solar glass daily, its first-half report showed. Of that, 2,600 tons were already in cold repair as of June 30. Xinyi Solar Holdings, ...

[Free Quote](#)



[What is Solar Glass? \(with picture\)](#)

Different Varieties Glass with high solar gain is best suited to windows in cold climates. By contrast, low solar gain, or spectrally selective, low-E glazings are more beneficial ...

[Free Quote](#)



[Can solar panels crack from cold water](#)

Solar panels are designed to withstand temperature extremes (-40°C to +85°C), but rapid cooling (e.g., cold water on hot panels) can cause microcracks due to thermal shock. ...



[Free Quote](#)



[How to install solar glass tube in winter , NenPower](#)

During winter, several factors must be inherently accounted for while planning to install solar glass tubes. Cold temperatures can influence material integrity, work efficiency, ...

[Free Quote](#)



[Radiative Warming Glass for High- Latitude Cold Regions](#)

This radiative warming glass holds the promise of making a significant contribution to sustainable building energy savings specifically for high-latitude cold regions, advancing the ...

[Free Quote](#)



[Does solar glass require a cooling system?](#)

For example, in areas with relatively low solar radiation or moderate ambient temperatures, the efficiency gain from a cooling system may be minimal. Acid Etched Frosted ...

[Free Quote](#)





Can solar panels crack from cold water

Solar panels are designed to withstand temperature extremes (-40°C to +85°C), but rapid cooling (e.g., cold water on hot panels) can cause microcracks due to thermal shock. Most panels are tempered glass (ISO ...

[Free Quote](#)



What is Solar Glass? (with picture)

Different Varieties Glass with high solar gain is best suited to windows in cold climates. By contrast, low solar gain, or spectrally selective, low-E glazings are more ...

[Free Quote](#)

Radiative Warming Glass for High-Latitude ...

This radiative warming glass holds the promise of making a significant contribution to sustainable building energy savings specifically for high-latitude cold regions, advancing the goal of carbon neutrality.

[Free Quote](#)



Can solar glass be used in cold climates?

As a solar glass supplier, I can tell you that our products are specifically designed to perform well in cold climates. Our Low Iron Tempered Solar Glass has a low iron content, ...

[Free Quote](#)



[How to install solar glass tube in winter](#)

During winter, several factors must be inherently accounted for while planning to install solar glass tubes. Cold temperatures can influence material integrity, work efficiency, and safety protocols. Both the human ...

[Free Quote](#)



[Does solar tempered glass crack easily in cold weather?](#)

As a supplier of solar tempered glass, I often encounter inquiries from customers about the performance of our products, especially in different weather conditions. One ...

[Free Quote](#)

Contact Us

For catalog requests, pricing, or partnerships, please visit:
<https://www.getonco.co.za>

[Scan QR Code for More Information](#)



<https://www.getonco.co.za>