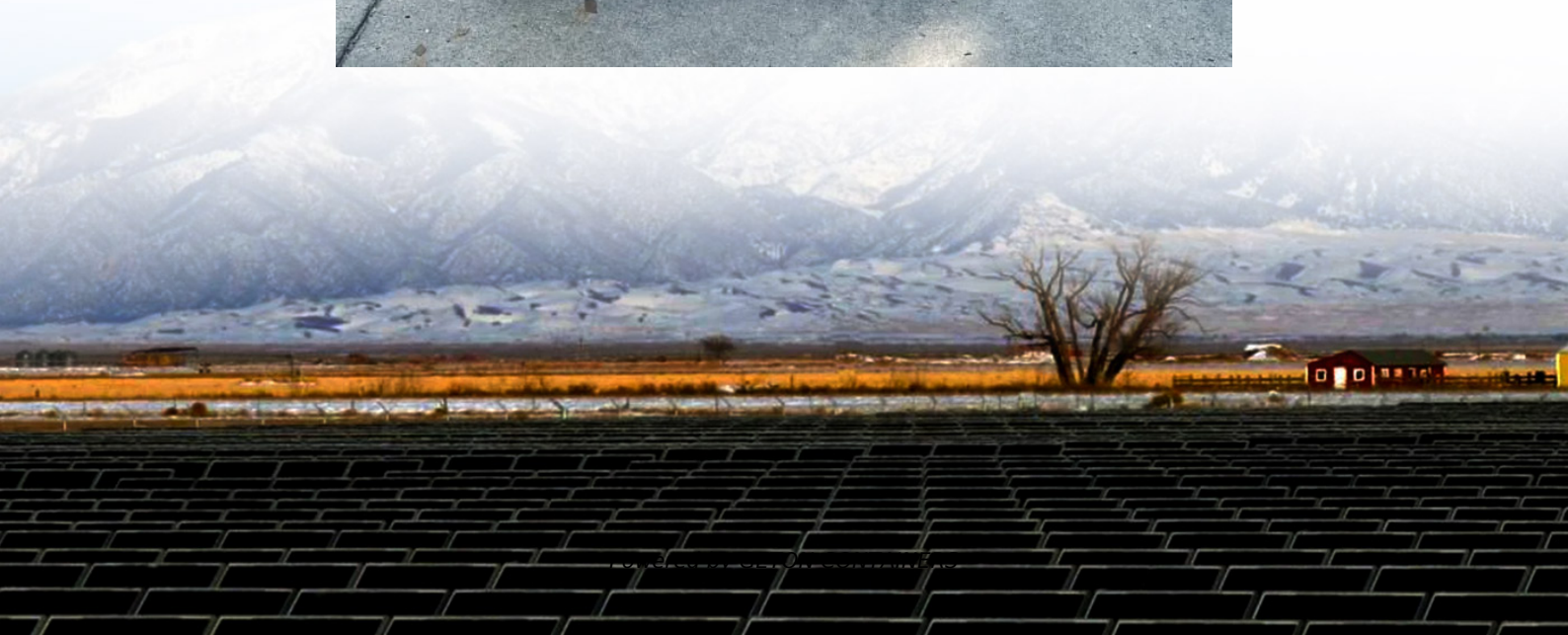


# **Solar power inverter night power**





## Overview

---

Do solar inverters work at night?

At night, solar inverters typically do not operate; instead, they enter standby or low-power modes to conserve energy while remaining ready to resume full function when sunlight returns. Some users consider turning off their inverters at night to save energy, as they may consume minimal power in standby mode.

What is night mode on a SolarEdge inverter?

Night Mode is a function on SolarEdge inverters aimed at conserving energy and enhancing system safety. Essentially, it indicates that the rooftop solar array is not generating usable voltage, particularly after sunset. If the inverter shows Night Mode during daylight, it may indicate a connector issue or a need for technician intervention.

How do solar inverters work?

Solar inverters are designed to operate only during daylight, generating electricity through solar panels. They automatically shut down at night and under conditions like clouds or accumulated snow, preserving energy and preventing system overloads.

How does a PV inverter save energy?

It helps conserve energy by limiting unnecessary functions during the day and balancing energy usage. In the evening when there are no PV power, the inverter shuts off. In the morning, the inverter turns on if Night mode is enabled, but with Night mode, the inverter turns on in the morning.



## Solar power inverter night power

---



### [Why Is My Off Grid Inverter Working Better at Night](#)

At night, with solar generation paused, the off grid power inverter receives a consistent flow from the battery bank, free from these adjustments. The result is a smoother ...

[Free Quote](#)

### [What Happens to Solar Inverters at Night? Do ...](#)

The nocturnal operation of solar inverters is a critical aspect of solar energy systems that requires careful consideration and optimization. While solar inverters do not shut down completely at night, they adjust ...

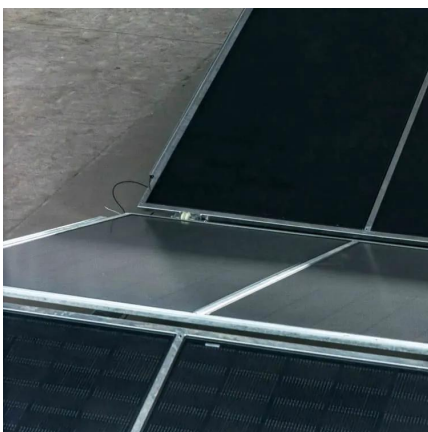
[Free Quote](#)



### [What Happens to Solar Inverters at Night? Do They Shut ...](#)

The nocturnal operation of solar inverters is a critical aspect of solar energy systems that requires careful consideration and optimization. While solar inverters do not shut ...

[Free Quote](#)



### [Does the Solar Inverter Turn Off at Night?](#)

This article explains whether solar inverter will turn off at night, why inverter automatically enter standby or shut off mode at night due to insufficient solar voltage, and how ...



[Free Quote](#)



## Do Solar Inverters Turn Off At Night?

Solar inverters, the essential components of solar power systems, do not actually turn off when the sun goes down. Instead, they enter a standby mode, ready to resume operation as soon ...

[Free Quote](#)



## Understanding the Q at Night Function in ...

Conclusion The Q at Night function is a valuable feature in modern solar power inverters, enabling them to contribute to grid stability even when solar generation is offline. Sungrow's 6.25/6.8 MVA MV ...

[Free Quote](#)



## Understanding the Q at Night Function in Solar Power Inverters

Conclusion The Q at Night function is a valuable feature in modern solar power inverters, enabling them to contribute to grid stability even when solar generation is offline. ...

[Free Quote](#)

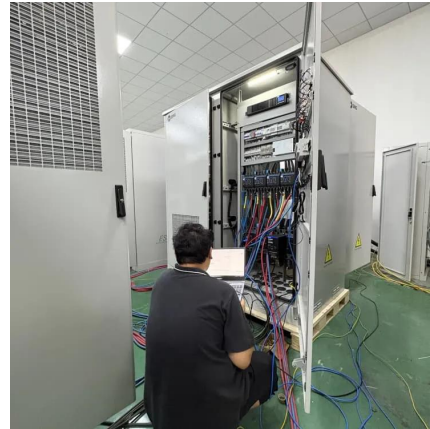




## [Does a Solar Inverter Work at Night? Here's ...](#)

If you're exploring solar energy, you might wonder how the system works, especially at night. One common question is, "Does a solar inverter work at night?" In this guide, we'll explain the role of a solar ...

[Free Quote](#)



## [Does a Solar Inverter Work at Night? Here's the Real Answer](#)

If you're exploring solar energy, you might wonder how the system works, especially at night. One common question is, "Does a solar inverter work at night?" In this ...

[Free Quote](#)

## [Do Solar Inverters Turn Off At Night?](#)

Solar inverters, the essential components of solar power systems, do not actually turn off when the sun goes down. Instead, they enter a standby mode, ready to resume operation as soon as daylight returns. In this ...

[Free Quote](#)



## [Why Do Solar Inverters Have A Night Mode?](#)

Solar inverters do not shut down completely at night, but they typically enter a standby or low-power mode to conserve energy and optimize efficiency. This standby mode ensures the inverter remains operational ...

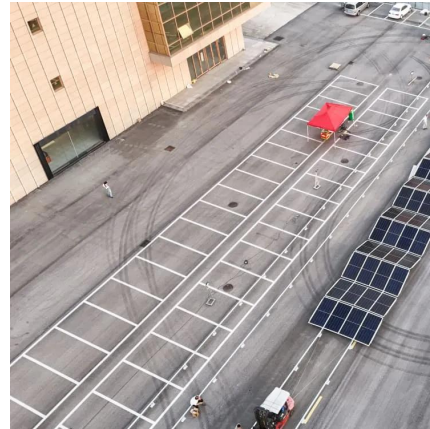
[Free Quote](#)



## Why Do Solar Inverters Have A Night Mode?

Solar inverters do not shut down completely at night, but they typically enter a standby or low-power mode to conserve energy and optimize efficiency. This standby mode ...

[Free Quote](#)



## Autarco solar inverters at night

5. Consider installing a backup generator Since solar inverters don't work at night, installing a backup generator is important. In the cases where solar energy is not sufficient to ...

[Free Quote](#)

## Contact Us

---

For catalog requests, pricing, or partnerships, please visit:  
<https://www.getonco.co.za>

**Scan QR Code for More Information**



<https://www.getonco.co.za>