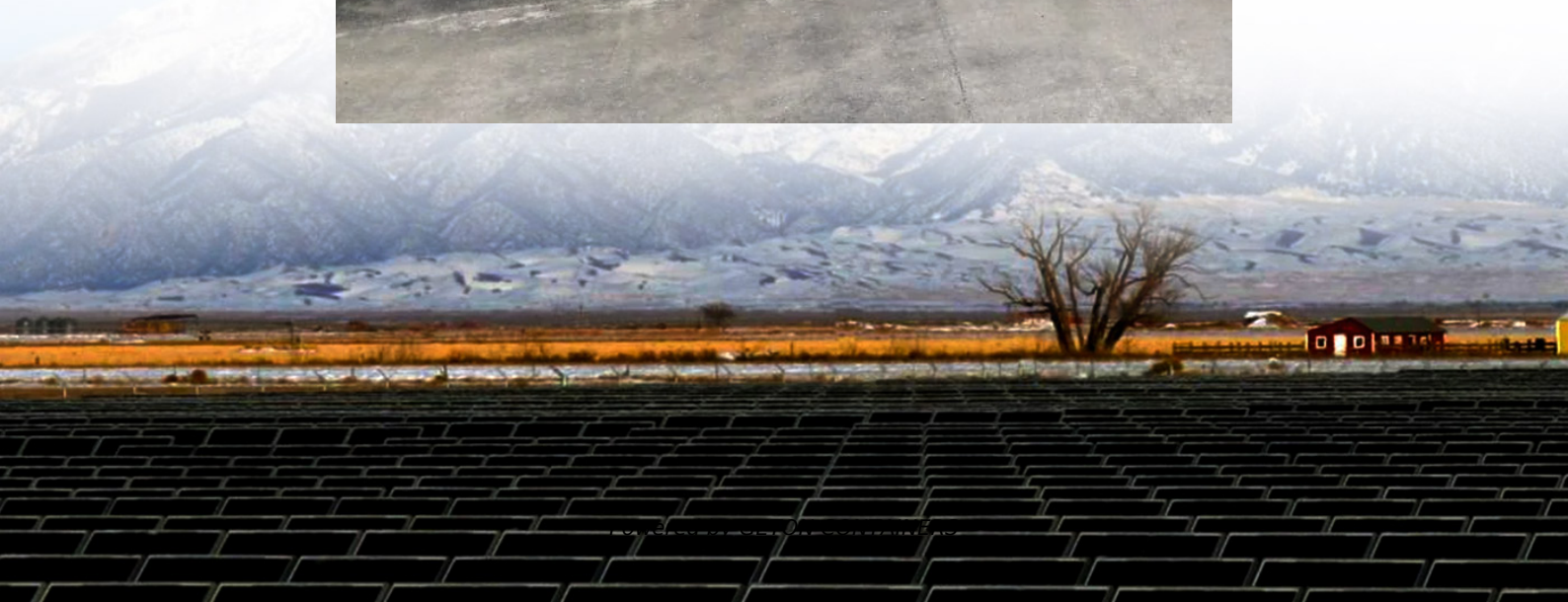


Structure of the inner part of a square solar container lithium battery





Overview

What is the basic structure of a lithium ion battery?

Understanding the basic structure is crucial for comprehending how these batteries function in everyday devices like smartphones, laptops, and electric vehicles. The main components of a lithium-ion battery include the anode, cathode, electrolyte, separator, and current collectors. The anode is one of the two electrodes in a lithium-ion battery.

What is a battery structure?

The battery structure refers to the arrangement and installation of the internal components of the battery. Different needs and applications require corresponding adjustments to the battery structure to meet actual needs. For example, positive electrode materials differ between ternary lithium batteries and lithium iron phosphate batteries.

What are the components of a prismatic Lithium battery?

The main components of a typical prismatic lithium battery include: a top cover, a casing, a positive plate, a negative plate, a stack or winding of separators, insulating parts, safety components, etc. ● The packaging reliability of the square lithium battery is high, and the energy efficiency of the system is high.

What is a lithium ion battery casing?

The lithium-ion battery casing, often referred to as the battery enclosure or housing, is the protective outer structure that holds the internal components of a lithium-ion battery. Its primary purpose is to ensure the safety of the battery and its surroundings by containing and insulating the potentially volatile materials within.



Structure of the inner part of a square solar container lithium batte



[Square battery cell module structure and ...](#)

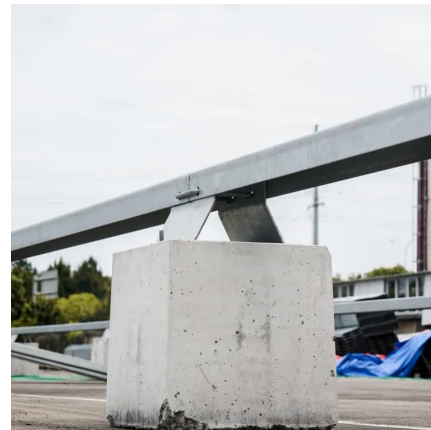
(1) Introduction to the structure of the square battery cell module The square battery module is generally composed of battery core, end plate, side plate, bottom plate, aluminum sheet (usually called Busbar), wiring harness ...

[Free Quote](#)

[Structure composition and advantages and ...](#)

A typical square lithium battery, the main components include: top cover, shell, positive plates, negative plates, and blocks of stacks or wounds, insulation parts, safety components, etc.

[Free Quote](#)



[Square battery cell module structure and process introduction](#)

(1) Introduction to the structure of the square battery cell module The square battery module is generally composed of battery core, end plate, side plate, bottom plate, aluminum sheet ...

[Free Quote](#)

[Understanding the Structure of Square Lithium Batteries](#)

Square (or prismatic) lithium batteries are widely used in energy storage systems and electric vehicles due to their compact design and high energy density. Unlike cylindrical ...



[Free Quote](#)



[Internal structure of a lithium-ion battery.](#)

Download scientific diagram , Internal structure of a lithium-ion battery. from publication: The lithium-ion battery modeling challenge: A dynamic systems and control perspective , This article

[Free Quote](#)



[Internal structure of a lithium-ion battery.](#)

Download scientific diagram , Internal structure of a lithium-ion battery. from publication: The lithium-ion battery modeling challenge: A dynamic systems and control ...

[Free Quote](#)



[THE ANATOMY & MECHANICS OF A LITHIUM ...](#)

A lithium-ion battery is comprised of six core battery components: anode, cathode, electrolyte, separator, current collectors, and the casing. In addition to these parts, there may be additional elements ...

[Free Quote](#)

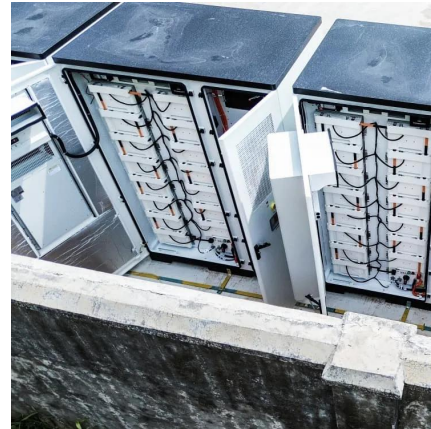




[Lithium Battery Parts Breakdown , SolarCtrl](#)

Lithium batteries have become the backbone of modern energy systems, powering everything from portable electronics to electric vehicles and solar energy storage. ...

[Free Quote](#)



[Structure of the inner part of a square lithium battery](#)

The battery structure refers to the arrangement and installation of the internal components of the battery. Different needs and applications require corresponding adjustments to the battery ...

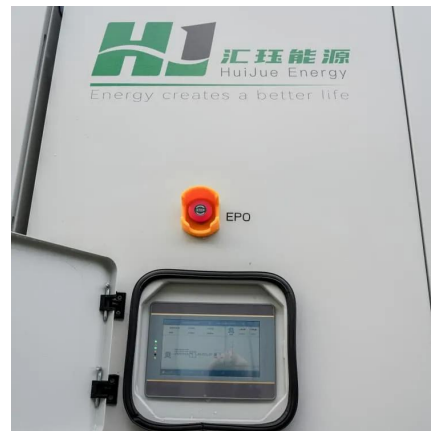
[Free Quote](#)



Battery structure

The degree of automation in the production process of soft pack power batteries is relatively low. Square battery structure The main components of a typical prismatic lithium battery include: a ...

[Free Quote](#)



[THE ANATOMY & MECHANICS OF A LITHIUM-ION BATTERY](#)

A lithium-ion battery is comprised of six core battery components: anode, cathode, electrolyte, separator, current collectors, and the casing. In addition to these parts, there may ...

[Free Quote](#)





Structure composition and advantages and disadvantages of square

A typical square lithium battery, the main components include: top cover, shell, positive plates, negative plates, and blocks of stacks or wounds, insulation parts, safety ...

[Free Quote](#)



Contact Us

For catalog requests, pricing, or partnerships, please visit:
<https://www.getonco.co.za>

Scan QR Code for More Information



<https://www.getonco.co.za>