

# **The solar grid-connected inverter is working normally**





## Overview

---

What is an on grid solar inverter?

An on grid solar inverter is a key component in solar power systems that are connected to the main power grid. Its primary function is to convert the direct current (DC) electricity generated by solar panels into alternating current (AC) electricity, which is compatible with the utility grid.

How PV Grid connected inverter works?

Before the pv grid connected inverter is connected to the grid for power generation, it needs to take power from the grid, detect the parameters such as voltage, frequency, phase sequence, etc. of the grid power transmission, and then adjust the parameters of its own power generation to be synchronized with the grid electrical parameters.

Can a grid tied inverter go back to mains?

Can go back to mains. Grid-tied inverters are commonly used in applications where some DC voltage sources (such as solar panels or small wind turbines) are connected to the grid. This article delves into the basics, working principle, and function of on-grid inverters, highlighting their significance in modern solar power systems.

How does a solar inverter work?

For safe and reliable integration with the electric grid, the solar inverter must precisely synchronize its AC output with the grid's voltage, frequency, and phase characteristics. This process, known as grid synchronization, is essential for ensuring a stable power flow, preventing equipment damage, and maintaining grid stability.



## The solar grid-connected inverter is working normally

---



### [Understanding Grid Tie Inverter Circuit for Solar Energy ...](#)

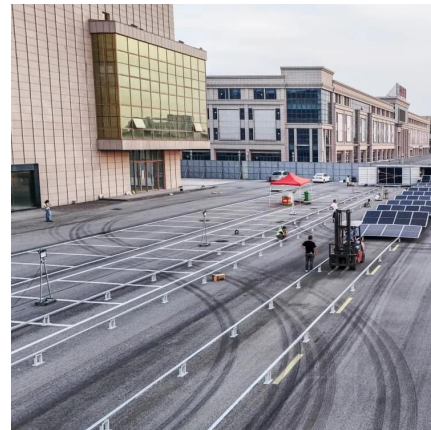
Grid tie inverters are essential for a variety of solar power system applications that are directly connected to the public electrical grid. In this case, the grid tie inverter circuit ...

[Free Quote](#)

### [Inverter Connected to the Grid, but Data Is Abnormal](#)

The inverter is operating normally and connected to the grid, but some strings are not connected. However, when checked in the app, there is a small current or a voltage value displayed.

[Free Quote](#)



### [How to Determine If a Solar Inverter Is Working Properly](#)

As the "brain" of a Solar Power System, the inverter converts DC electricity from solar panels into usable AC electricity--making its stable operation critical to energy efficiency, ...

[Free Quote](#)

### [How Does a Solar Inverter Synchronize with Grid , Complete ...](#)

For safe and reliable integration with the electric grid, the solar inverter must precisely synchronize its AC output with the grid's voltage, frequency, and phase ...





[Free Quote](#)



### [What is an On Grid Solar Inverter? Definition, Components, ...](#)

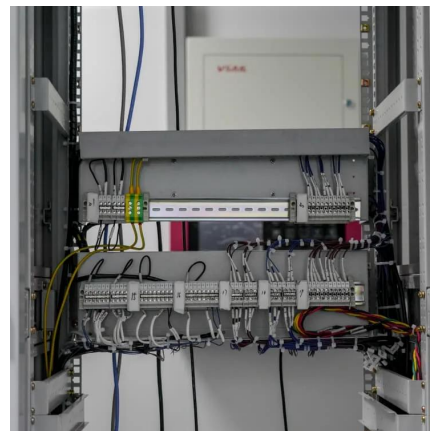
An on grid solar inverter is a key component in solar power systems that are connected to the main power grid. Its primary function is to convert the direct current (DC) ...

[Free Quote](#)

### [On Grid Inverter: Basics, Working Principle and Function](#)

A grid-tie inverter (GTI for short) also called on-grid inverter, which is a special inverter. In addition to converting direct current into alternating current, the output alternating ...

[Free Quote](#)



### [Can a Hybrid Inverter Work with Solar Panels Only?](#)

This article walks through how hybrid inverters work with solar only, the typical operating modes, the pros and cons, when this setup makes sense, and when a simple grid ...

[Free Quote](#)



## Solar Integration: Inverters and Grid Services Basics

If you have a household solar system, your inverter probably performs several functions. In addition to converting your solar energy into AC power, it can monitor the system ...

[Free Quote](#)



## Contact Us

---

For catalog requests, pricing, or partnerships, please visit:  
<https://www.getonco.co.za>

**Scan QR Code for More Information**



<https://www.getonco.co.za>