

Typhoon construction base station communication equipment





Overview

What are the components of a base station?

The base station will have one or more RF antennas installed to transmit and receive RF signals from other devices. The block diagram of a base station typically includes the following key components: Baseband Processor: The baseband processor too deals with different communication protocols and interfaces with mobile network infrastructure.

What is a base station?

Network Coverage: Base stations cover a given part of the earth. Various base stations are set up in such a way that forms a network to encompass all areas of the city, region or even an entire country.

Why do we need a base station?

Technological advancements: The New technologies result in evolved base stations that support upgrades and enhancements such as 4G, 5G and beyond, its providing faster speeds with better bandwidth. Emergency services: They provide access to emergency services, so that in case of emergency, people can call through their mobile phones.

What are the different types of base stations?

Some basic types of base stations are as follows: Macro-base stations are tall towers ranging from 50 to 200 feet in height, placed at strategic locations to provide maximum coverage in a given area. Those are equipped with large towers and antennas that transmit and receive radio signals from wireless devices.



Typhoon construction base station communication equipment



[Airborne Base Stations for Emergency and Temporary ...](#)

Airborne communication networks have been recently studied for the provision of wireless communication services and have continually attracted interest from government, ...

[Free Quote](#)

[Typhoon Bebinca Strikes Shanghai: Caltta Ensures Communication](#)

Facing the urgent situation, Shanghai's emergency management system quickly responded and went into full combat readiness. As a critical means of communication support, the 370 MHz ...

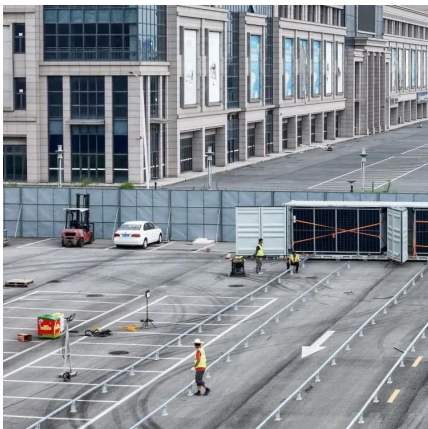
[Free Quote](#)



[TRUE Strengthens Emergency Measures to Protect Mobile](#)

TRUE's urgent preparedness measures for Typhoon Kajiki include: Deploying power generators, fuel reserves, and backup batteries to base stations in case of flood-related ...

[Free Quote](#)



[Communication Base Station Disaster Recovery. Huijue ...](#)

When Nature Strikes: Can Our Networks Survive?
As typhoons batter coastal cities and wildfires engulf telecom infrastructure, one urgent question emerges: How can communication base ...



[Free Quote](#)



[Communication Base Station Serviceability. Huijue Group E...](#)

The \$23 Billion Question: Why Do 38% of Network Outages Persist? When a typhoon disrupts communication base station serviceability in Southeast Asia, or a snowstorm cripples 5G ...

[Free Quote](#)



[TRUE Strengthens Emergency Measures to ...](#)

TRUE's urgent preparedness measures for Typhoon Kajiki include: Deploying power generators, fuel reserves, and backup batteries to base stations in case of flood-related power outages. Deploying mobile ...

[Free Quote](#)



[Typhoon-Proof Tech: J& R's Satellite Emergency Communication ...](#)

When a level-17 super typhoon struck Yantian District, Shenzhen, powerful winds and heavy rain swept across the Meishajian scenic area - but J& R's satellite emergency ...

[Free Quote](#)





Base Stations

Cost and infrastructure: Base station construction, as well as retrofitting base stations for deeper penetration requiring additional investment in infrastructure like land purchase costs and equipment ...

[Free Quote](#)



Reliability prediction and evaluation of communication base stations ...

Earthquake disasters can cause collapse of houses, damage to communication base stations towers and transmission lines, resulting in the disruption of communication ...

[Free Quote](#)



[Airborne Base Stations Bring Back Connectivity](#)

ZTE has developed airborne base stations mounted on uncrewed aerial vehicles to rapidly restore connectivity during natural disasters. These stations can support both private emergency ...

[Free Quote](#)



[Communication Base Station Weatherproof Design . Huijue ...](#)

How many weatherproof communication base stations could survive a Category 5 typhoon? Last monsoon season, Southeast Asia witnessed 23% cellular network outages due to inadequate ...

[Free Quote](#)



Contact Us

For catalog requests, pricing, or partnerships, please visit:
<https://www.getonco.co.za>

Scan QR Code for More Information



<https://www.getonco.co.za>