

What base stations are there in Tbilisi





Overview

How many metro lines are there in Tbilisi Georgia?

The Tbilisi Metro is a rapid transit system in Tbilisi, Georgia, and it began operation in January 1966. The system consists of two lines and 22 stations. View a map of metro lines and stations for Tbilisi Metro system.

Where to go in Tbilisi?

Station Square 1: this station provides access to the central part of the city, and thus a great way to get around the historical areas. It also connects to the second metro line, the Saburtalo Line. The metro of Tbilisi is open throughout most of the day in order to reach as much people as possible.

Which Tbilisi Metro station is a new extension of Line 2?

Vazha-Pshavela: An extension of Line 2, this station was added in 2000. It is located in the Vake neighbourhood. State University: Serving the Saburtalo district, this is the latest addition to the Tbilisi Metro system. Construction of this station began in 1985, but was halted due to lack of funds. It was finally completed and opened in 2017.

When was the first metro line in Tbilisi launched?

The first metro line in Tbilisi was launched in January 1966. It connected the highly populated residential area Didube with the Rustaveli Avenue, city center on the right bank of the Mtkvari River. Tbilisi metro system was the first in Caucasus and the fourth in the USSR.



What base stations are there in Tbilisi



[Tbilisi metro map, Georgia](#)

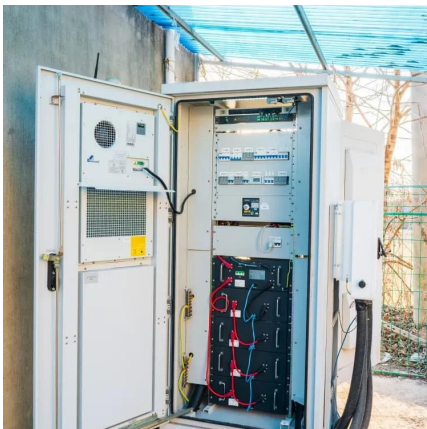
Lines and stations The Tbilisi metro system has two lines and 23 stations distributed along its 26.4 km of track. It carries about 600,000 people every day throughout the city, an impressive feat considering the network is this ...

[Free Quote](#)

[Tbilisi Metro Tbilisi Metro o Georgia sights ...](#)

How to get there: The list of all Metro stations in Tbilisi are as follows: Varketili, Samgori, Isani, 300 Aragveli, Avlabari, Freedom Square, Rustaveli, Marjanishvili, Station Square I, Nadzaladevi, Gotsiridze, ...

[Free Quote](#)



[List of Tbilisi metro stations](#)

This is a list of the 22 stations of the Tbilisi Metro, in Tbilisi, Georgia. Gldani Varketili Line*Varketili (Georgian: ?????????, Varketili, literally meaning I m kind, a city suburb to ...

[Free Quote](#)

Tbilisi Metro

Tbilisi metro system is the first in Caucasus and the fourth in the USSR. Today there are two lines, Akhmeteli-Varketili and Saburtalo, comprised of total 22 stations, 16 and 6 in each line ...



[Free Quote](#)



Tbilisi Metro

The line currently features 6 underground stations on 6,7 km of tracks. Thus, Tbilisi Metro consists of two lines and 22 stations (of them 20 stations are underground) and 27,1 km of track. There ...

[Free Quote](#)



[Addresses and phone numbers of all train, bus stations and ...](#)

Tbilisi Central Railway Station Address: Station Square 2, Station Square metro station Phone: +995 322 19 90 10 Shota Rustaveli International Airport

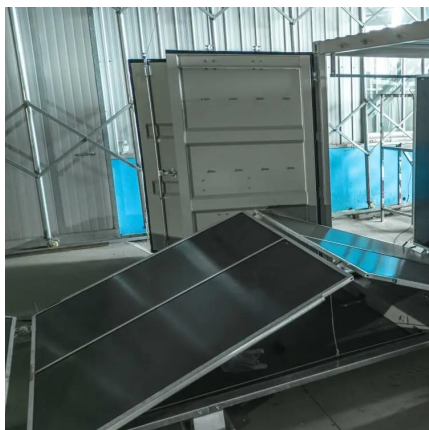
[Free Quote](#)



Tbilisi Metro

The line currently features 6 underground stations on 6,7 km of tracks. Thus, Tbilisi Metro consists of two lines and 22 stations (of them 20 stations are underground) and 27,1 km of track. There is one interchange station ...

[Free Quote](#)





[Tbilisi Metro Tbilisi Metro o Georgia sights and destinations](#)

How to get there: The list of all Metro stations in Tbilisi are as follows: Varketili, Samgori, Isani, 300 Aragveli, Avlabari, Freedom Square, Rustaveli, Marjanishvili, Station ...

[Free Quote](#)



[Tbilisi metro map, Georgia](#)

Lines and stations The Tbilisi metro system has two lines and 23 stations distributed along its 26.4 km of track. It carries about 600,000 people every day throughout the city, an impressive feat ...

[Free Quote](#)

Contact Us

For catalog requests, pricing, or partnerships, please visit:
<https://www.getonco.co.za>

Scan QR Code for More Information



<https://www.getonco.co.za>