

What is a communication engineering base station





Overview

What is a base station in telecommunications?

In telecommunications, a base station is a fixed transceiver that serves as the main communication point for one or more wireless mobile client devices. It not only connects wireless devices to each other but also links them to other networks or devices, often through dedicated high-bandwidth wired or fiber optic connections.

What is a base station and how does it work?

A base station is a fixed point of communication between mobile devices and the wider telecom network. It transmits and receives radio signals, enabling your phone to access voice, data, and internet services. Together, thousands of base stations form a seamless web of coverage known as a cellular network. How Does It Work?

.

Why are base stations important?

Base stations are the backbone of wireless communication networks, playing a pivotal role in signal transmission, network reliability, and high-speed data connectivity. As technology evolves, the importance of base stations will continue to grow, addressing new challenges and supporting the ever-expanding demand for wireless communication services.

What is a base station in a cellular network?

It acts as the intermediary between the mobile device and the broader telecommunications network, facilitating both data transfer and voice communication. In cellular networks, a base station typically consists of antennas, a transmitter/receiver system, and a base station controller (BSC).



What is a communication engineering base station



Understanding Base Stations: The Backbone of Wireless Communication

In today's digital age, reliable and high-speed communication is more essential than ever. Whether it's for mobile phones, internet services, or IoT (Internet of Things) devices, ...

[Free Quote](#)



[What Does a Base Station Do and Why Is It Essential for ...](#)

What Is a Base Station? A base station is a fixed point of communication between mobile devices and the wider telecom network. It transmits and receives radio signals, ...

What Is a Base Station?

A base station can refer to any of the following:

1. In the computer networking realm, a base station is the central hub for wireless network communication between computers. Today, these types of base ...

[Free Quote](#)



[What is a Base Station? -- From Communication Core to ...](#)

The base station is an indispensable piece of infrastructure in the mobile communication network, silently supporting every phone call, message, and network ...

[Free Quote](#)



[Free Quote](#)



[What Is a Base Station? Definition and How It Works](#)

A base station is a fixed transceiver that serves as the central communication point for mobile devices within a defined geographical area, known as a cell. It is sometimes called ...

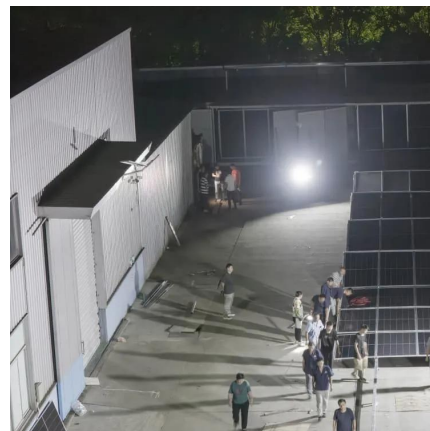
[Free Quote](#)



[What Is the Role of a Base Station in Wireless Communication?](#)

Base stations are the backbone of wireless communication networks, playing a pivotal role in signal transmission, network reliability, and high-speed data connectivity. As ...

[Free Quote](#)



Contact Us

For catalog requests, pricing, or partnerships, please visit:
<https://www.getonco.co.za>



Scan QR Code for More Information



<https://www.getonco.co.za>